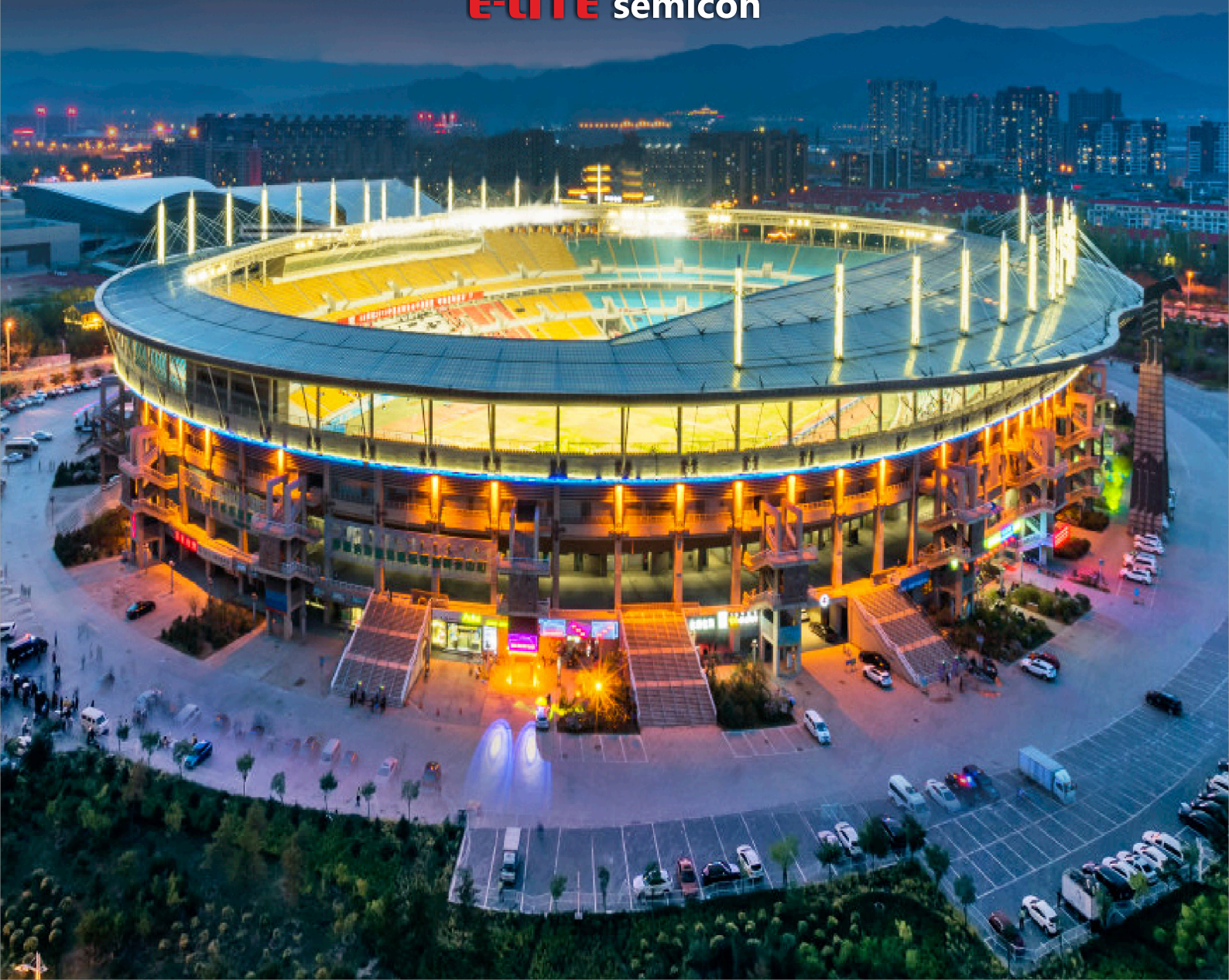


ARES™

LED

Sports Light

E-LITE semicon



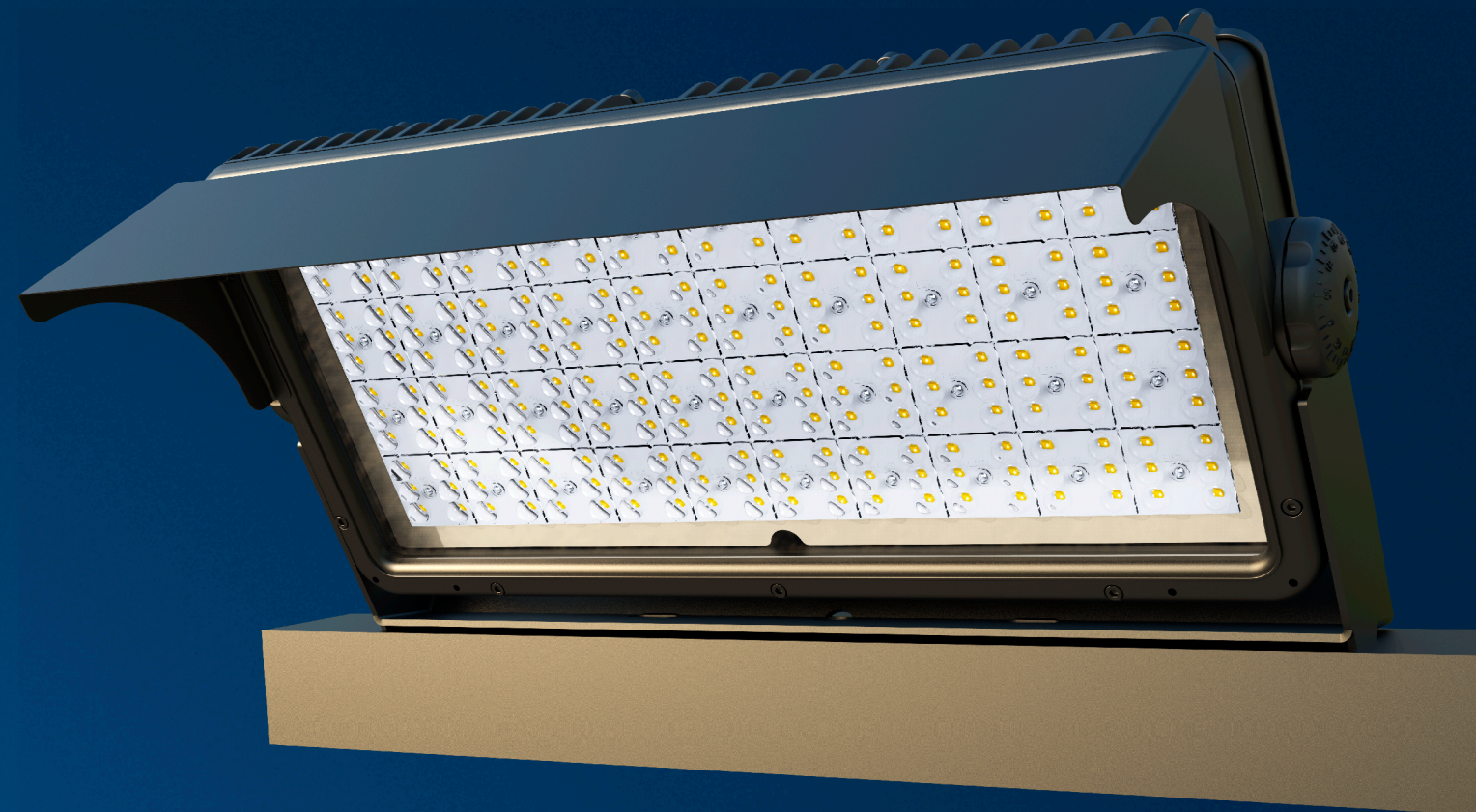
JUST RIGHT FOR TV

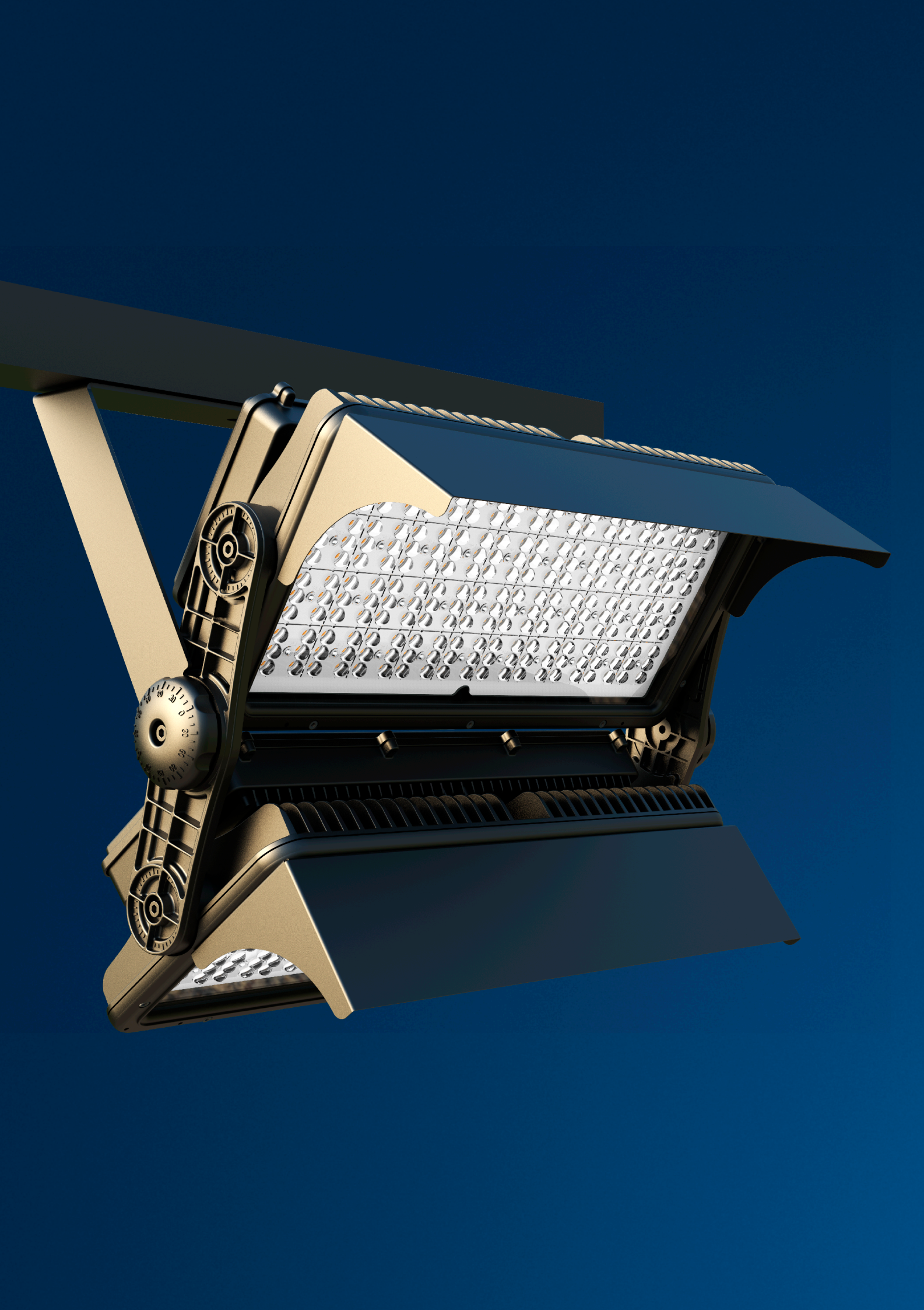
Ares is a just-right-for-TV floodlight for sports venues that host televised events and many other areas.

For sports venues that host televised events, lighting spec for HD, 4K TV are key.

Ares illuminates the athletes and the on-field action so that TV cameras will capture bright and colorful images, providing an optimal viewing experience.

E-LITE semicon / Hello@elitesemicon.com / www.elitesemicon.com





FLEXIBILITY FOR ALL SPORTS NEED

From recreational level to club level and to competition level, the higher level of competition, the greater the requirements. Designed for flexibility, Ares covers a broad range of sports lighting needs.

Working at 150 Lm/W and light output up to 120,000lm, The Ares floodlight enables substantial savings from CO₂ emissions to energy consumption of more than 50% as compared to conventional lighting solutions.



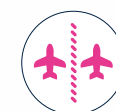
Recreational
sports



Multi-sports
halls



Areas for
controlled
spill light



Apron
spaces



Transportation &
industrial areas

E-LITE semicon / Hello@elitesemicon.com / www.elitesemicon.com

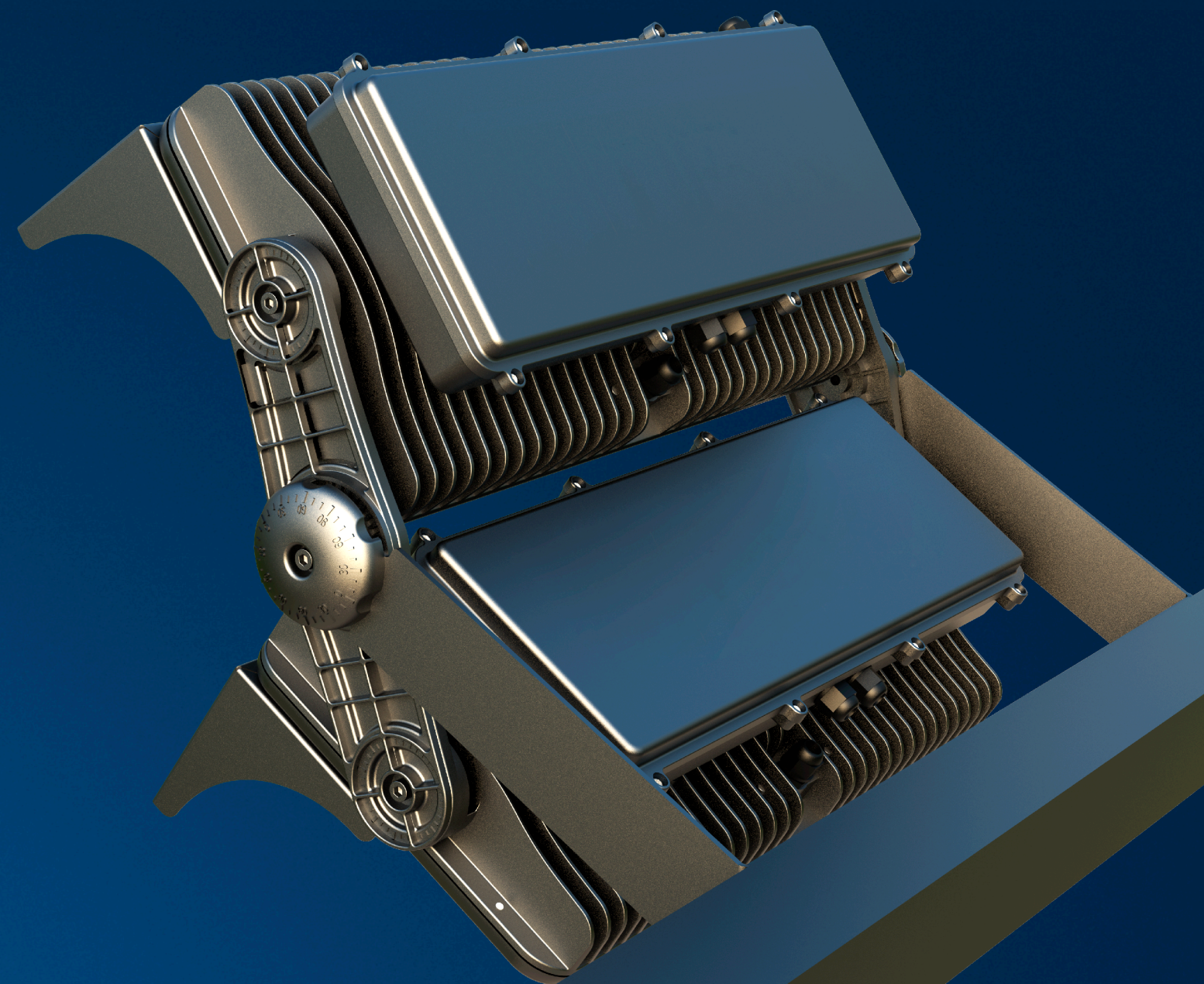
OPTIMAL LIGHTING PERFORMANCE

The Ares provides optimum visibility, without glare or shadows as the special shield and optics design. Then every athlete, whatever their sports, can enjoy themselves, perform at their best and avoid injury.

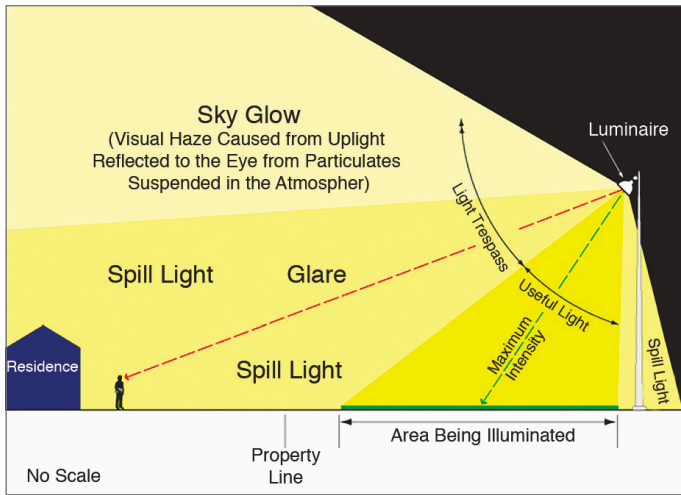
With U bracket and a sleek square compact, The Ares sports light can be adjusted 360° horizontally and 180° vertically to ensure even light for every Corner of sports field but no light pollution to other areas.

GLARE CONTROL

Glare typically impacts larger areas as pole mounted luminaires may be visible from long distances. Incorporating external shielding (the visors), the Ares limits direct view of light sources and help reduce glare.



LIMIT THE LIGHT POLLUTION



Obtrusive Light Components.

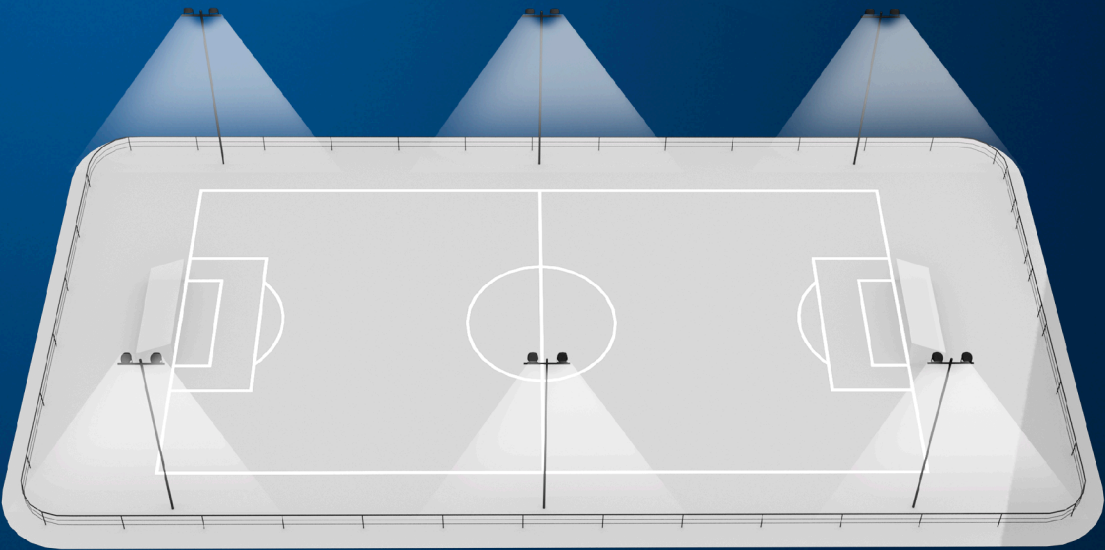
SKY GLOW

The haze or glow of light emitted above a lighting installation is a form of light pollution referred to as sky glow, must conform to Sports and Recreational Area Lighting requests of IES RP-6-15/ EN 12193. Sky glow can be minimized by reducing the amount of up-light cast into the sky. For the light emitted into the sky directly from the luminaire, external shielding (visors) can be added.



SPILL LIGHT

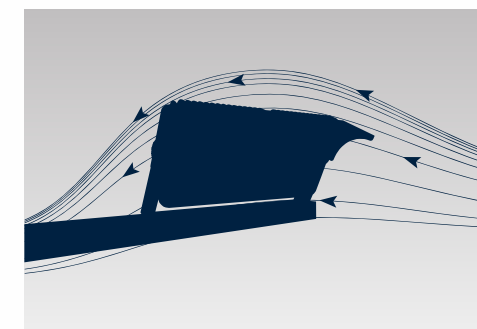
Any light that falls beyond the area that is being illuminated that is not intentional or required is considered spill light. Although spill light should generally be controlled in residential areas, reactions to spill light often vary. Some residents are ambivalent with regard to spill light, or may even prefer spill light on their property to enhance their feeling of security, while other residents want the spill light directed away from their property.



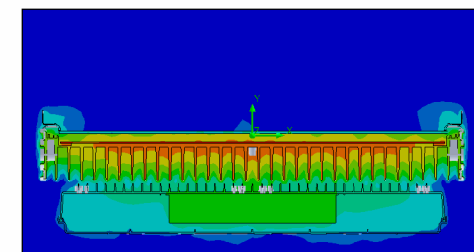


WIND RESISTANCE MINIMIZATION

It is essential to consider the wind resistance of the flood lights and their suitability for existing or proposed installation in the outdoors. Please note that flood lights mounted horizontally on the ground, such as asymmetrical distribution help to reduce wind resistance and allow better control of spill light.



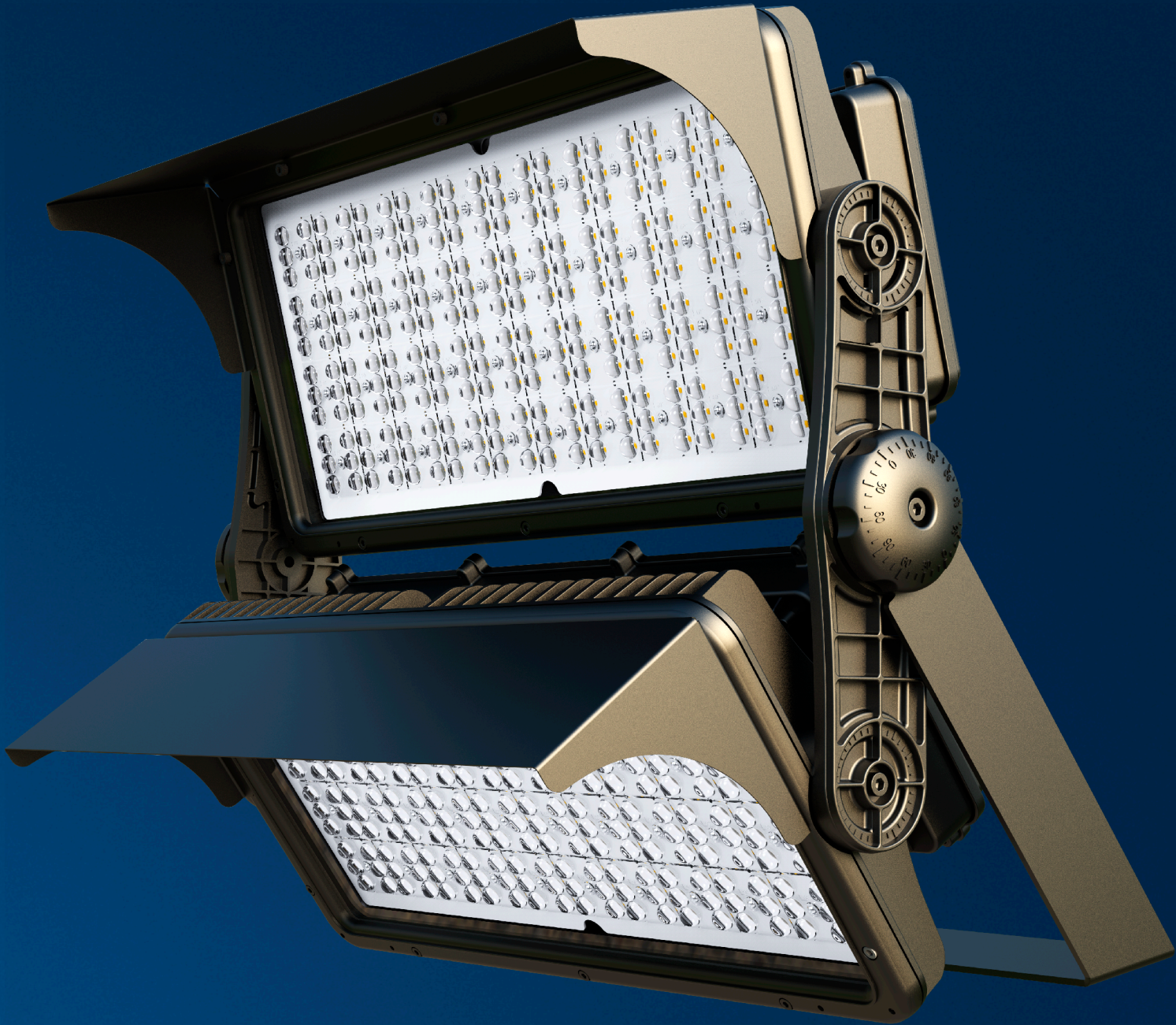
THERMAL OPTIMIZATION



The proprietary thermal efficiency design with passive cooling maximizes heat dissipation to ensure safe operation and good lifetime performance of the luminaire in high temperature environments.

PERFORMANCE

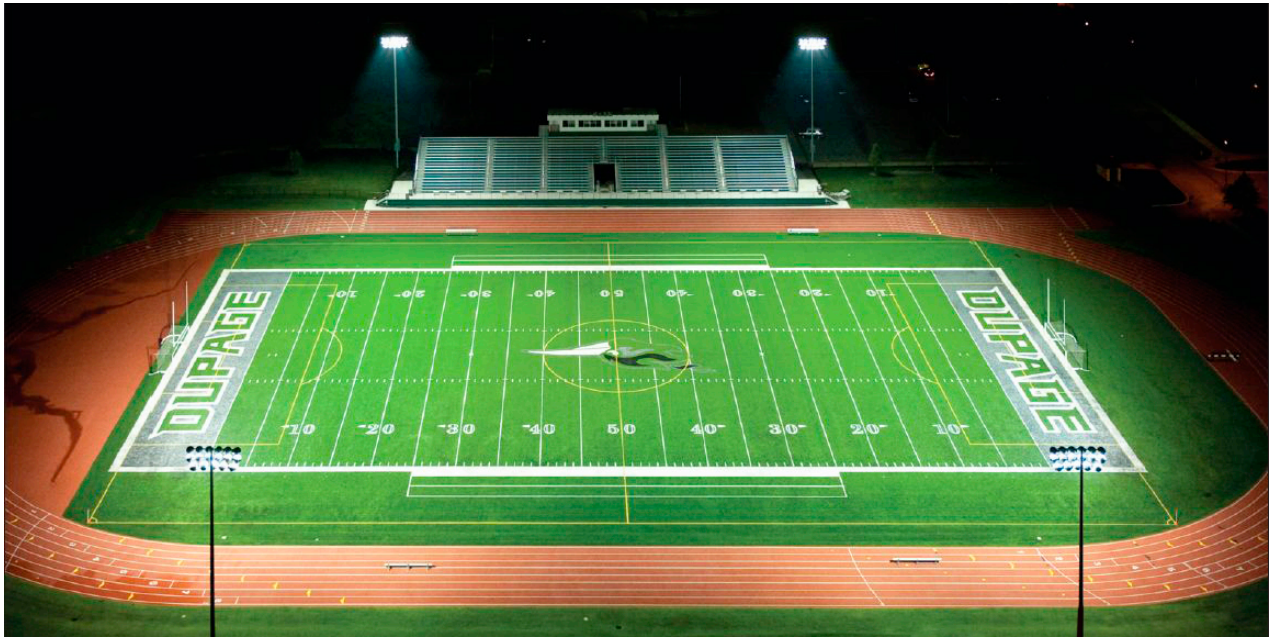
	500W~1200W
	140lm/W
	Philips Lumileds
	100-277 VAC (277-480 VAC Optional) Dimming Optional
	0.95 min
	≥70
	4500~5500K (2500~5500K optional)
	L70>150,000hours
	30° , 60° , 90°
	IP66
	IK08
	SPD10KV
	Operating Temperature:-40°C to +45°C (-40°F to 113°F) Storing Temperature:-45°C to +80°C (-49°F to 176°F)



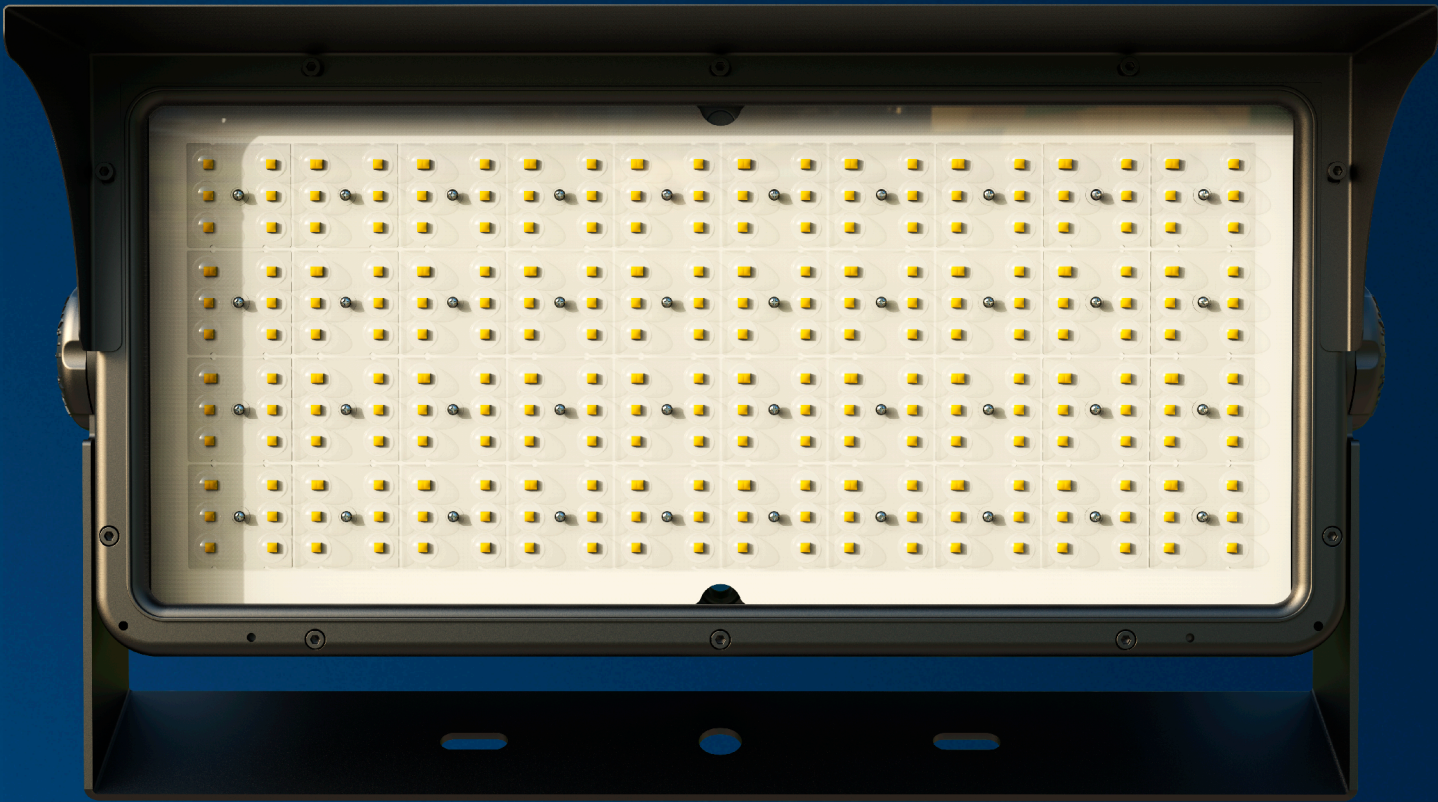
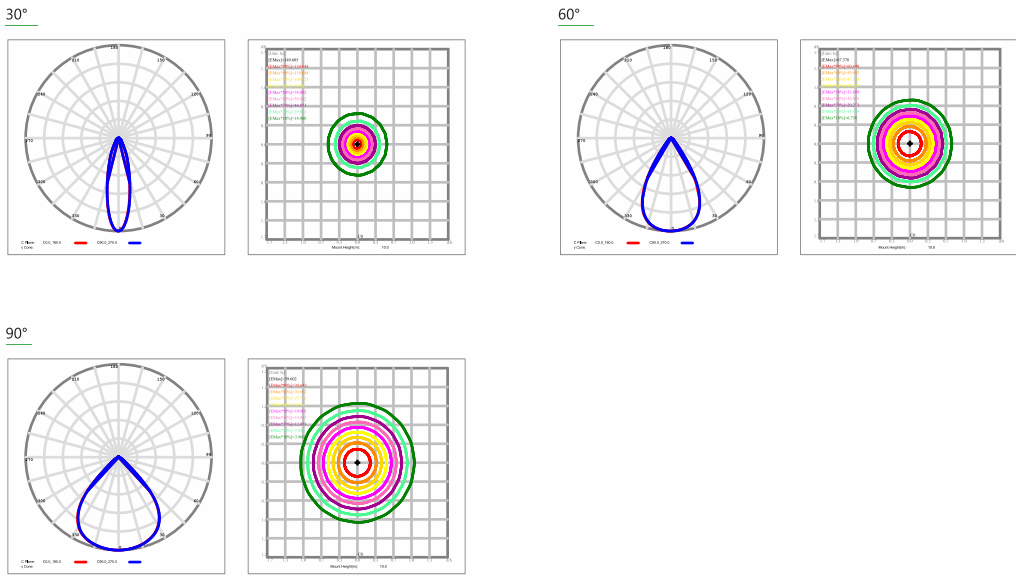


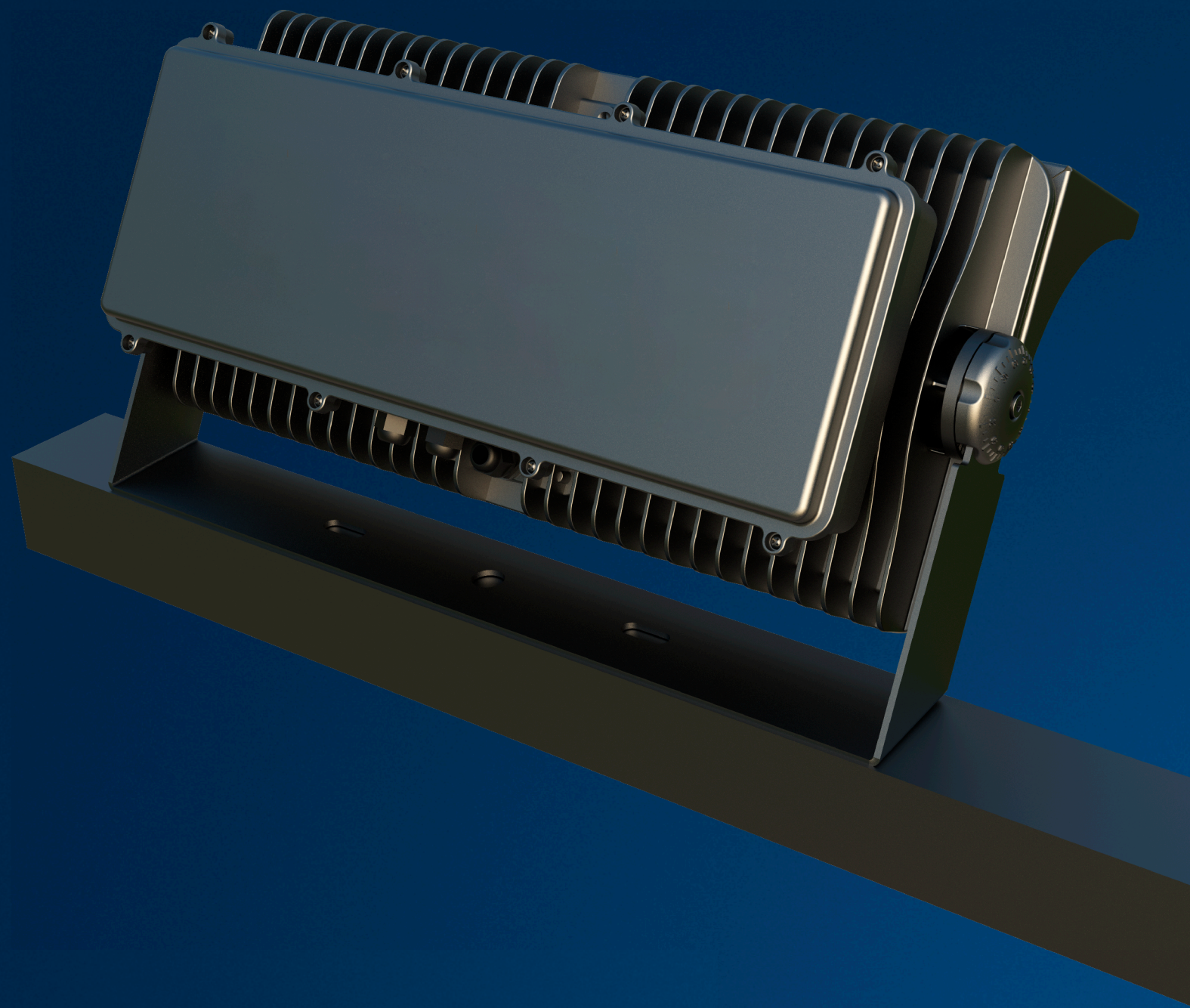
SPECIFICATIONS

Model	Power	Efficacy(IES)	Total Lumen	Dimension	N.W
EL-AS-500	500W	140LPW	70,000lm	636x355x284mm	15kg
EL-AS-600	600W	140LPW	84,000lm		
EL-AS-800	800W	140LPW	112,000lm	678x646x284mm	30kg
EL-AS-1000	1000W	140LPW	140,000lm		
EL-AS-1200	1200W	140LPW	168,000lm		



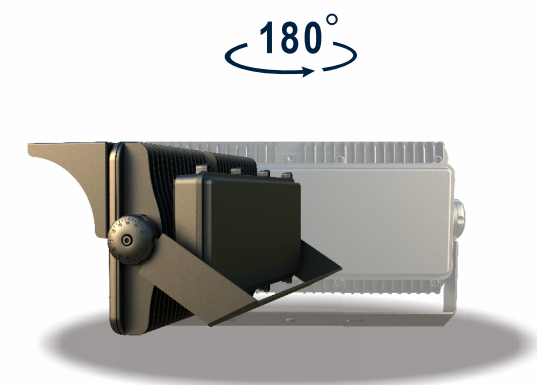
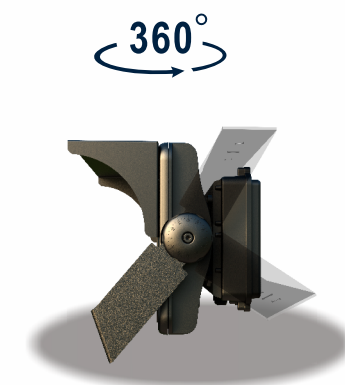
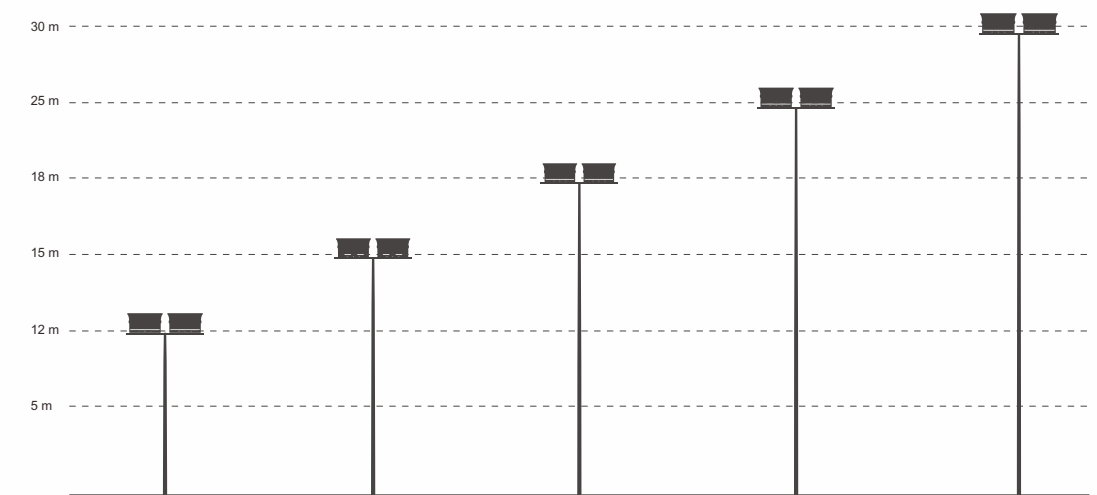
PHOTOMETRICS





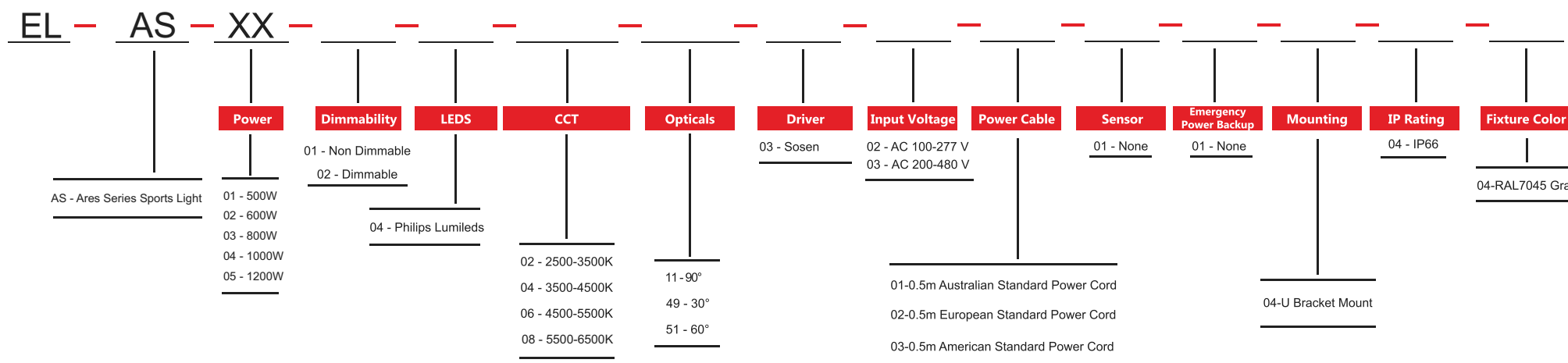
INSTALLATION

Safety and simplicity are crucial when installing and maintaining a sport light at great heights. As a complete lighting solution for both outdoor and indoor spaces, it is ideally suited for a large variety of mast configurations, mountings and heights. Featuring a lighter, more compact design and improved thermal management, it is much easier to install.



ORDERING INFORMATION

E-LITE semicon



E-Lite Semiconductor Co., Ltd.
Headquarter & Factory
Website: <http://www.elitesemicon.com>