

E-LITE semicon

NEW EDGE

Sports Light & Flood Light





DESIGN

New Edge is the standard of outstanding light quality with high performance and low light pollution.

The high power and high lumen 120W to 1200W luminaire fittings are commonly used in sports arenas, high masts and large areas for security.

Furthermore, a choice of 15 high quality optics for flexible lighting design and compliance with international sports broadcasting standards.

The external driver box supports separate use at a distance from the floodlight and pre-fixed onto the fixture as well.



Recreational
sports



Multi-sports
halls



Areas for
controlled
spill light



Apron
spaces



Transportation &
industrial areas

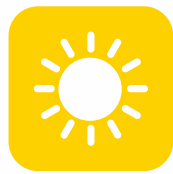
E-LITE semicon / Hello@elitesemicon.com / www.elitesemicon.com

FEATURES

E-LITE semicon / Hello@elitesemicon.com / www.elitesemicon.com



System Light
Efficacy
160~165 LPW.



Ultra Bright,
Up to
192,000Lm.



Flexible,
Modular
Design.



15 Optical
Lense
Choices.



Easy
Installation
& Maintenance.



3G / 5G
Vibration.



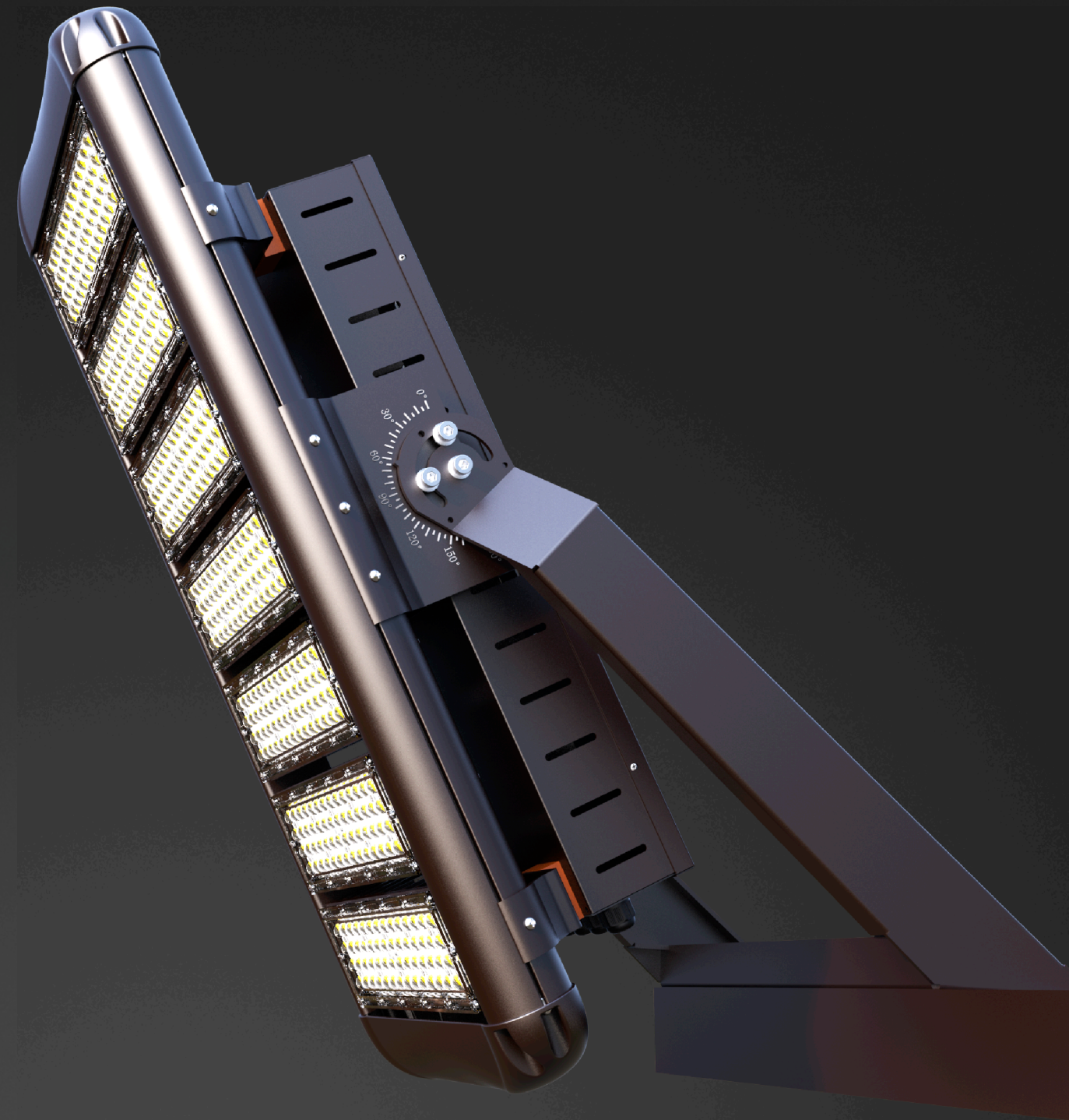
Salt fog 1000hrs.



ETL、DLC5.1
CB、CE、RoHS.



5~10 years warranty,
up to 150,000
hours long life.



TO THE CHANGING WORLD

Today, we live in a 24-hour society. After a busy day at work, we need to enjoy energy, passion and exercise from sports which can bring us balance, harmony, happiness and fun. People are therefore looking for the flexibility to do exercise in their free time. For sports clubs and centers, adaptable lighting is essential.



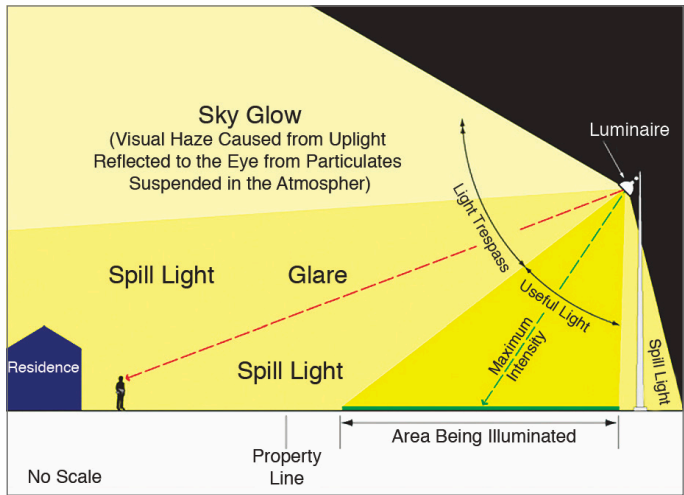
LIGHT JUST RIGHT FOR ATHLETES

The NED LED sports light offers optimum visibility without glare or shadows thanks to a special shield and optical design. As a result, every athlete, whatever their sport, can enjoy themselves, perform at their best and avoid injury.

BETTER LIGHT FOR THE ENVIRONMENT

The quality of eyesight of young people is gradually dropping because the dramatically growing use of electronic products. And obesity through a sedentary lifestyle is also increasing, so it is more important than ever to encourage young people to do sports regularly. The LED lighting system can support the creation of healthier environment and encourage greater participation in recreational sports. It uses less energy and reduces carbon footprint.

LIMIT THE LIGHT POLLUTION



Obtrusive Light Components.

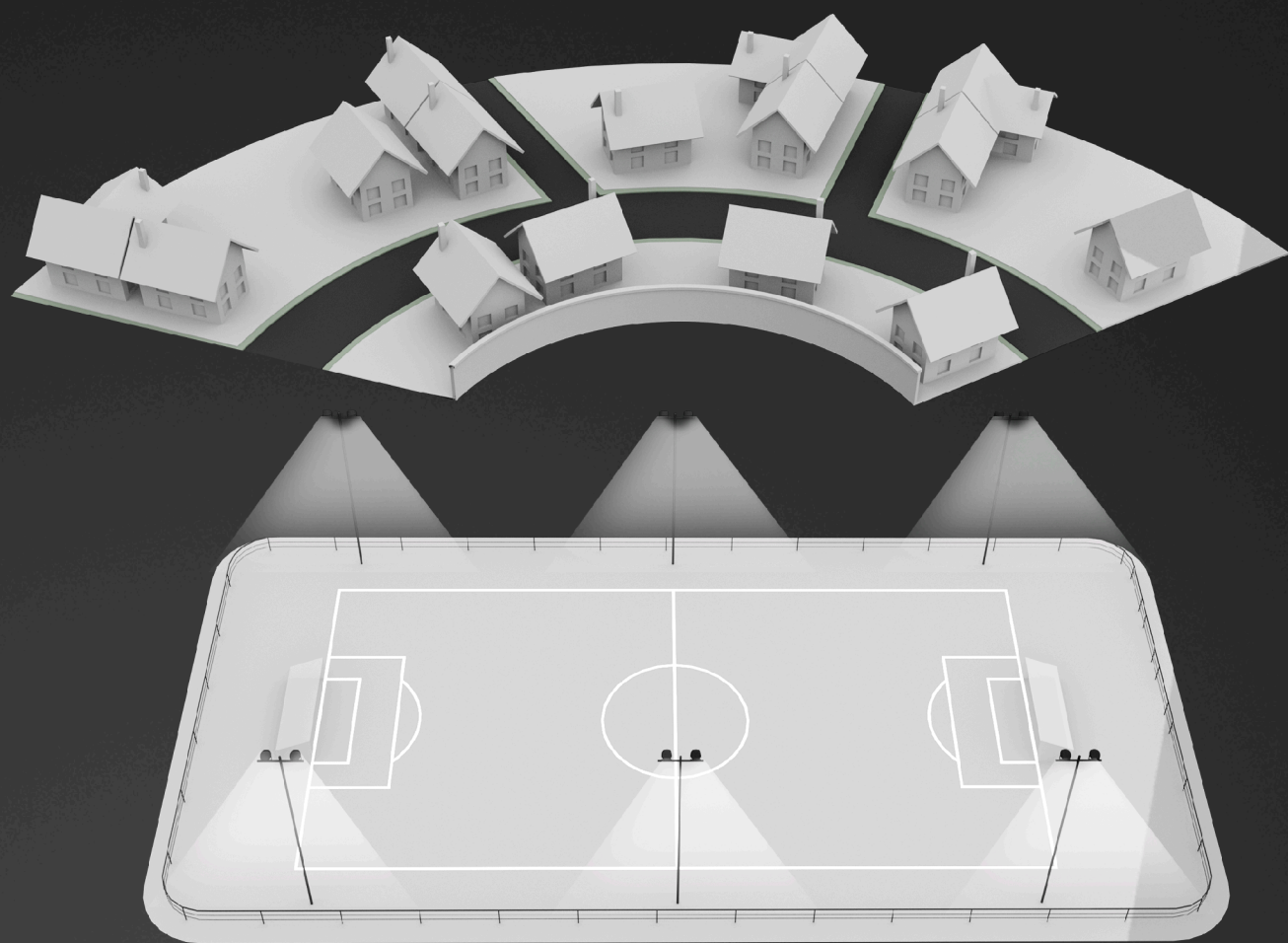
SKY GLOW

The haze or glow of light emitted above a lighting installation is a form of light pollution referred to as sky glow, must conform to Sports and Recreational Area Lighting requests of IES RP-6-15/ EN 12193. Sky glow can be minimized by reducing the amount of up-light cast into the sky. For the light emitted into the sky directly from the luminaire, external shielding (visors) can be added.



SPILL LIGHT

Any light that falls beyond the area that is being illuminated that is not intentional or required is considered spill light. Although spill light should generally be controlled in residential areas, reactions to spill light often vary. Some residents are ambivalent with regard to spill light, or may even prefer spill light on their property to enhance their feeling of security, while other residents want the spill light directed away from their property.



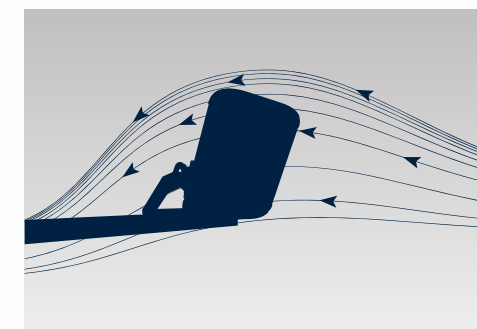
GLARE

The impacts of glare should generally be reduced. Glare typically impacts larger areas as pole mounted luminaires may be visible from long distances. The use of luminaires that incorporate internal and/or external shielding (visors) to limit direct view of light sources help reduce glare.

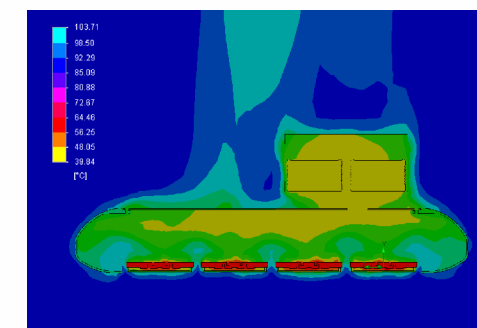


WIND RESISTANCE MINIMIZATION

It is essential to consider the wind resistance of the flood lights and their suitability for existing or proposed installation in the outdoors. Please note that flood lights mounted horizontally on the ground, such as asymmetrical distribution help to reduce wind resistance and allow better control of spill light.








THERMAL OPTIMIZATION



The proprietary thermal efficiency design with passive cooling maximizes heat dissipation to ensure safe operation and good lifetime performance of the luminaire in high temperature environments.



PERFORMANCE

	120W~1200W
	160lm/W~165lm/W
	Philips Lumileds
	100-277 VAC (347/480 VAC Optional) Dimming Optional
	0.95 min
	Sosen / Inventronics
	≥70
	4500~5500K (2500~5500K optional)
	L70>150,000hours
	22°, 30°, 45°, 60°, 90°, 110°, 150° 40×100°, 60×100°, 60×120°, 70×135°, 75×150°, 80×150°
	IP66
	IK10
	PC 3000U
	Operating Temperature:-45°C to +50°C (-49°F to 122°F) Storing Temperature:-45°C to +80°C (-49°F to 176°F)



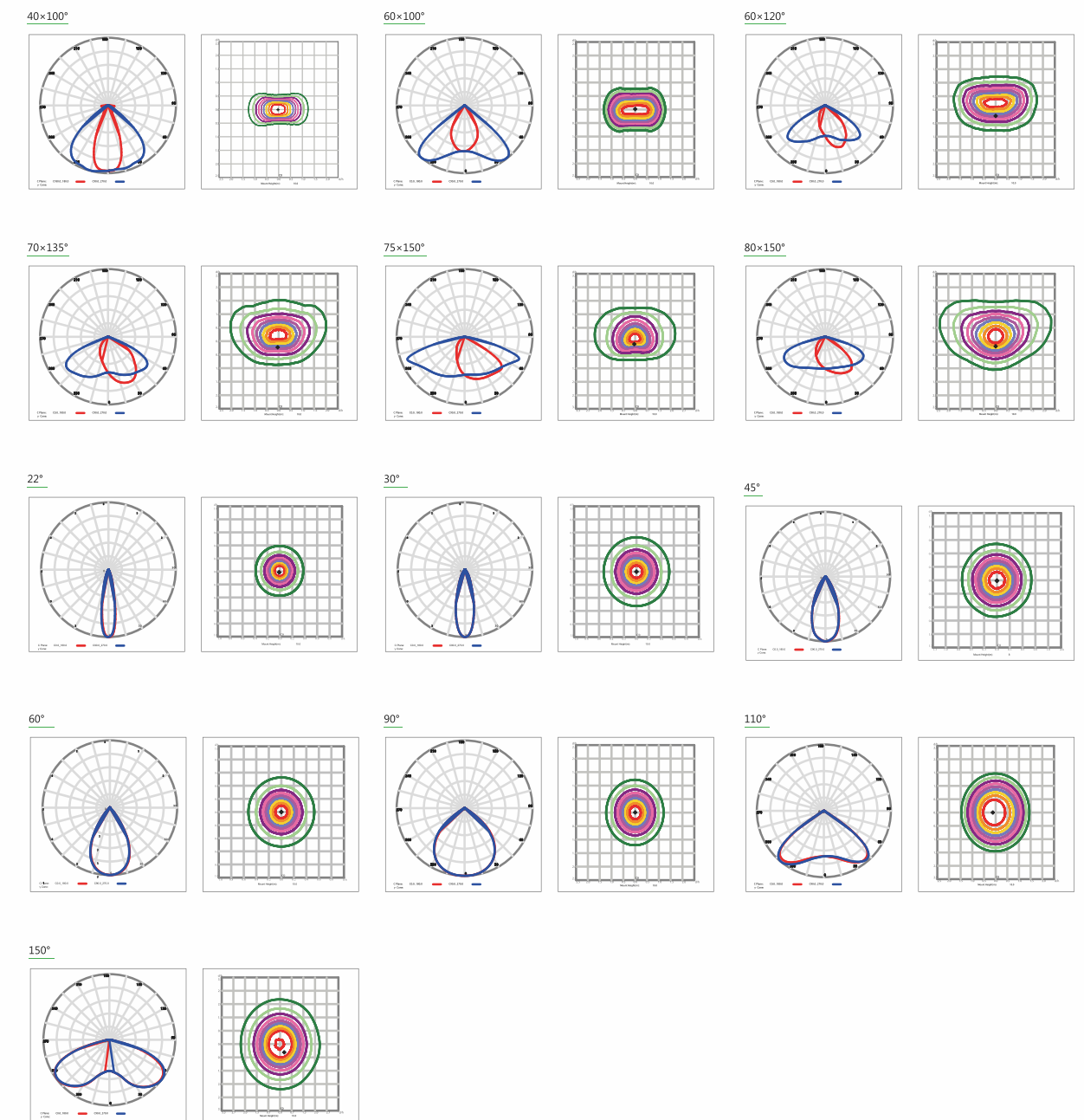
SPECIFICATIONS

Part#	Power	NO. of Modules	Efficacy(IES)	Total Lumen	N.W	EPA	Product Dimensions
EL-NED-120(FL)	120W	1	160LPW	19,200lm	5.4kg/11.9lbs	/	352x370x175mm 13.9x14.6x6.9in
EL-NED-200(FL)	200W	2	165LPW	33,000lm	6.5kg/14.3lbs	/	446x370x175mm 17.6x14.6x6.9in
EL-NED-300(FL)	300W	3	165LPW	49,500lm	7.5kg/16.5lbs	1.04ft²@30° 1.36ft²@45° 1.62ft²@60°	540x370x175mm 21.3x14.6x6.9in
EL-NED-400(FL)	400W	4	165LPW	66,000lm	7.9kg/17.4lbs	1.25ft²@30° 1.66ft²@45° 1.98ft²@60°	619x410x175mm 24.4x16.1x6.9in
EL-NED-600(FL)	600W	5	160LPW	96,000lm	12.5kg/27.6lbs	1.36ft²@30° 1.96ft²@45° 2.35ft²@60°	713x410x180mm 28.1x16.1x7.1in
EL-NED-800(FL)	800W	7	160LPW	128,000lm	17.5kg/38.6lbs	1.42ft²@30° 1.98ft²@45° 2.47ft²@60°	910x420x180mm 35.8x16.5x7.1in
EL-NED-960(FL)	960W	8	160LPW	153,600lm	20.3kg/44.8lbs	1.59ft²@30° 2.23ft²@45° 2.77ft²@60°	1004x420x180mm 39.5x16.5x7.1in
EL-NED-1200(FL)	1200W	10	160LPW	192,000lm	25.7kg/56.7lbs	1.94ft²@30° 2.71ft²@45° 3.37ft²@60°	1192x420x180mm 46.9x16.5x7.1in





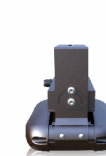
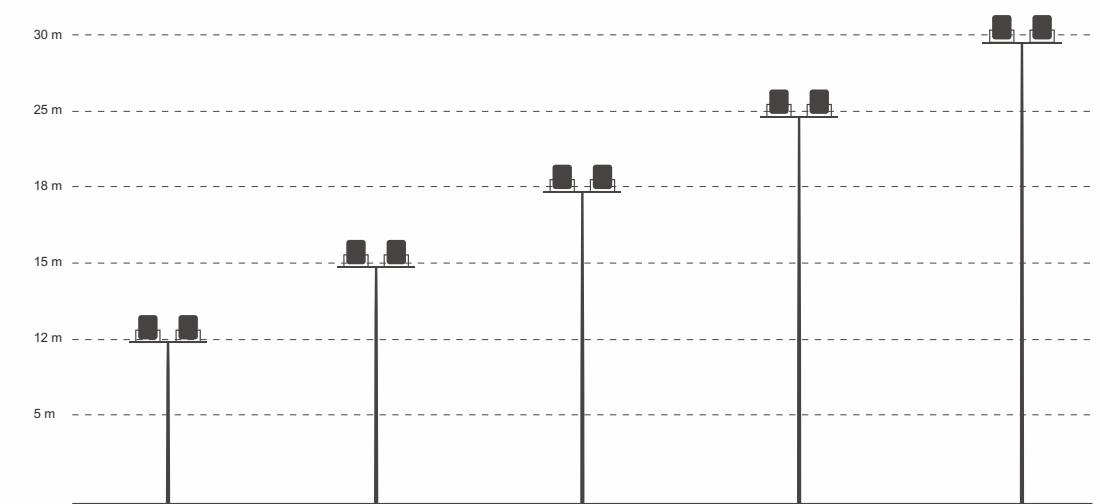
PHOTOMETRICS





INSTALLATION

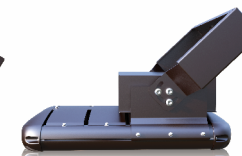
Safety and simplicity are crucial when installing and maintaining a sport light at great heights. As a complete lighting solution for both outdoor and indoor spaces, it is ideally suited for a large variety of mast configurations, mountings and heights. Featuring a lighter, more compact design and improved thermal management, it is much easier to install.



Universal Bracket



AYBM Bracket Mount



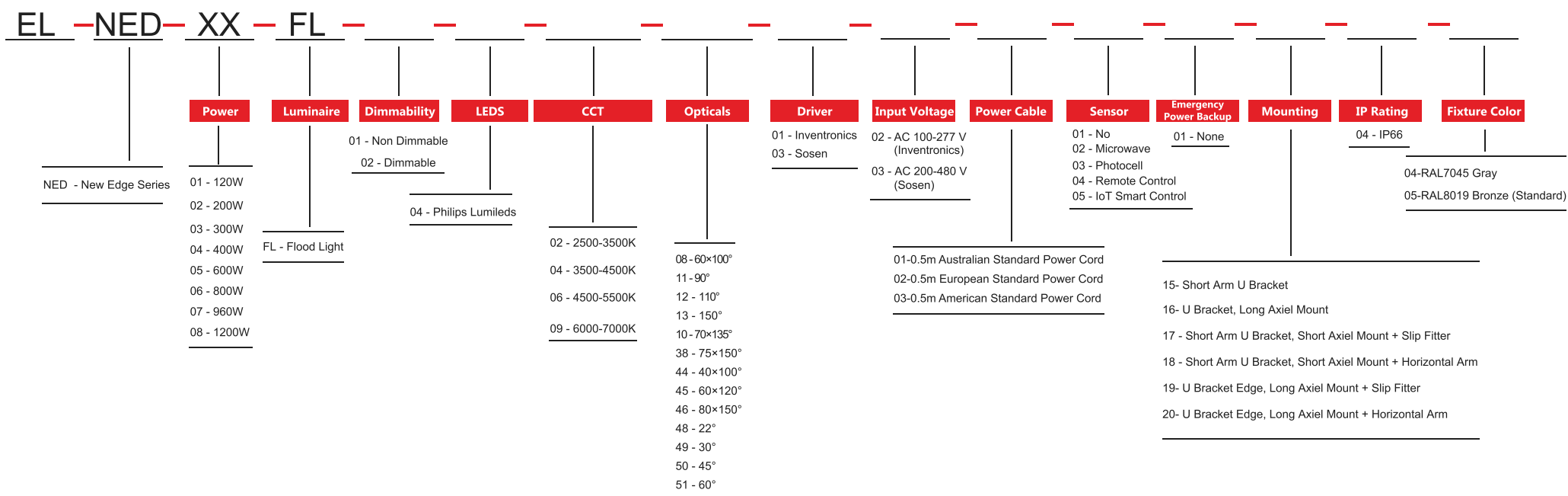
360° Heavy Duty U Bracket



360° Heavy Duty U Bracket + Slip Fitter

ORDERING INFORMATION

E-LITE semicon



E-Lite Semiconductor Co., Ltd.
Headquarter & Factory
Website: <http://www.elitesemicon.com>