

E-LITE semicon

EDGE SERIES

Area Flood Light
High Bay Light





ANY APPLICATIONS ANYWHERE EDGE HAS YOU COVERED

Edge is a universal luminaire for both indoor and outdoor use such as flood lighting, area lighting, high bay lighting and security light. It delivers a high power lumen package for commercial and industrial applications. 50W to 450W, 140Lm/W efficacy, and choice of 15 optics produce precise illumination for any types of site or application.

Highly efficient one-for-one replacement for conventional industrial luminaires - and with a higher efficacy than its predecessors, it promises a quicker payback than ever.



General
Flood
Lighting



Security
Lighting



Billboard
Lighting



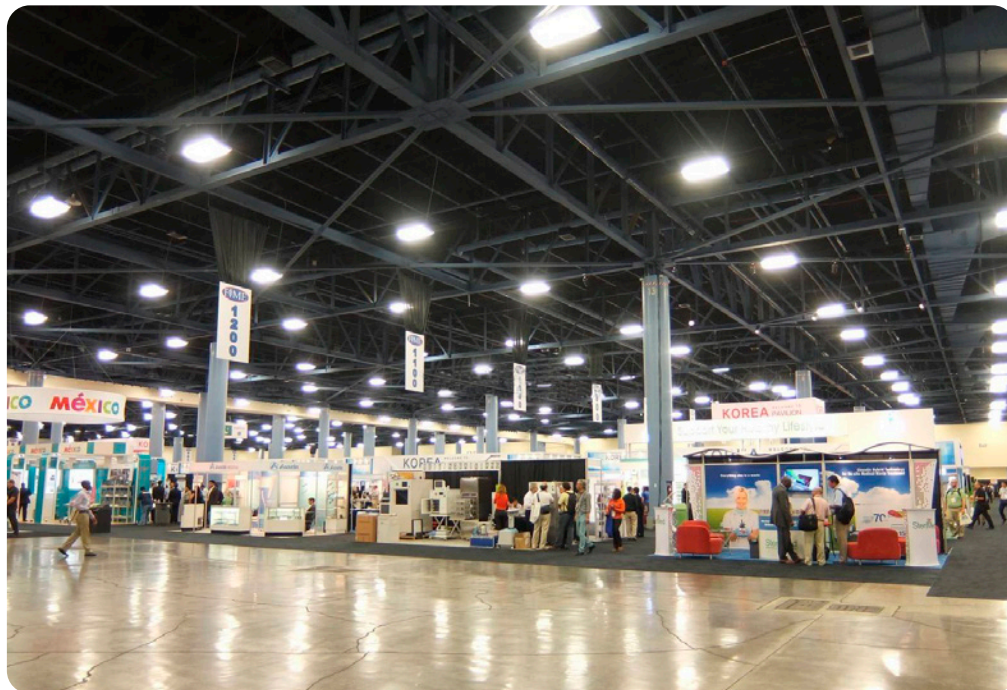
Area
Lighting



Heavy-duty
Bay
Lighting

PRODUCT FEATURES

- Heavy-duty built for demanding applications.
- IP66/IP67 rated for wet environments and all weather conditions.
- 3G/5G vibration rated.
- 15 types of optic lens at choice.
- Choice of mount accessories accommodate wall mount, surface mount, or pole mount.





PERFORMANCE



75W~450W



137lm/W~154lm/W



Philips Lumileds



100-277 VAC (347/480 VAC Optional) Dimming Optional



0.95 min



≥70



4500~5500K (2500~5500K optional)



L70>100,000hours



60x100° / 90x145° / 70x130° / 80x145° / 80x150° / 80x150° / 80x125°
25° / 30° / 60° / 90° / 110° / 140°



IP66 / IP67



IK10



3G / 5G Vibration

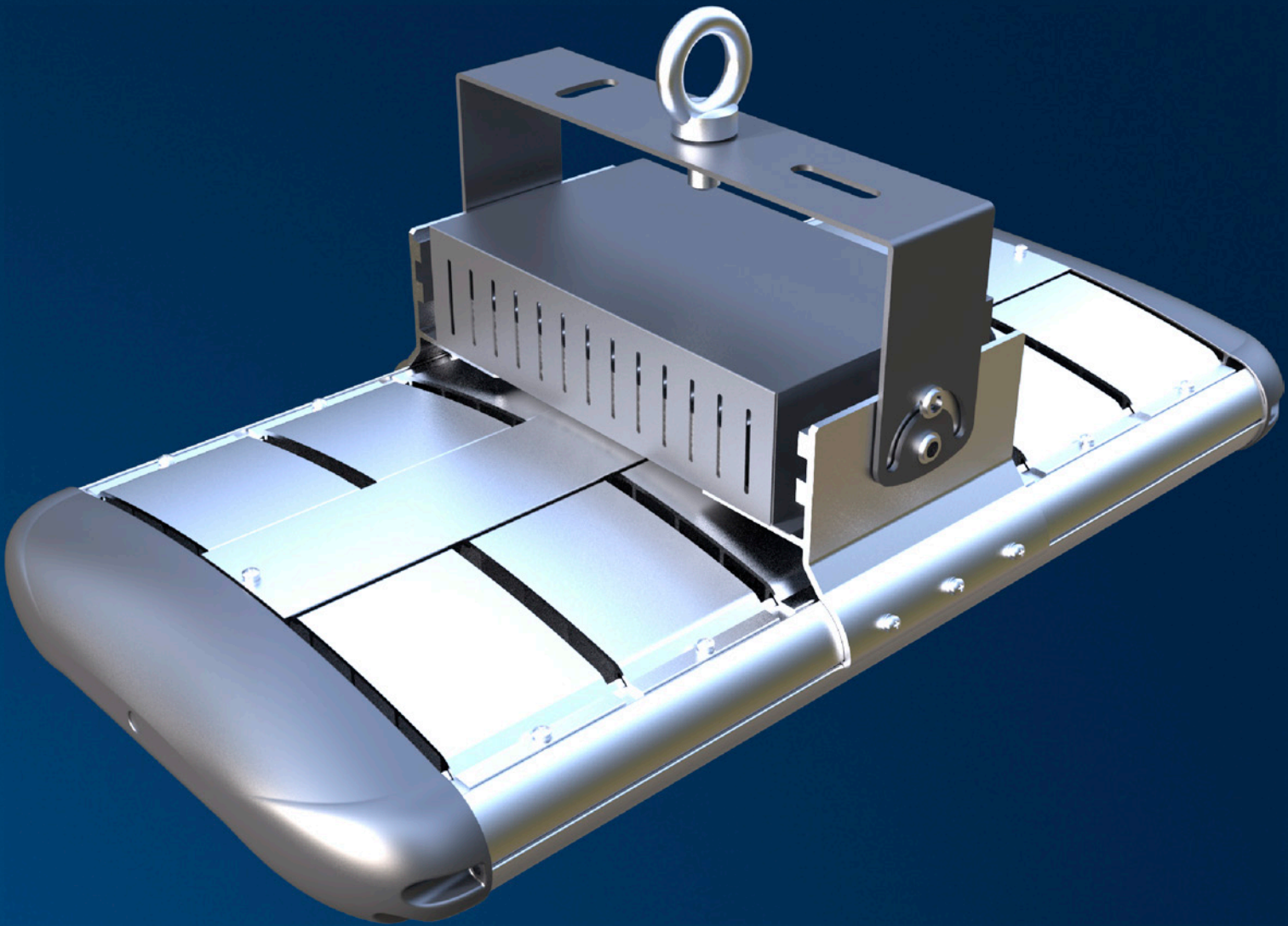


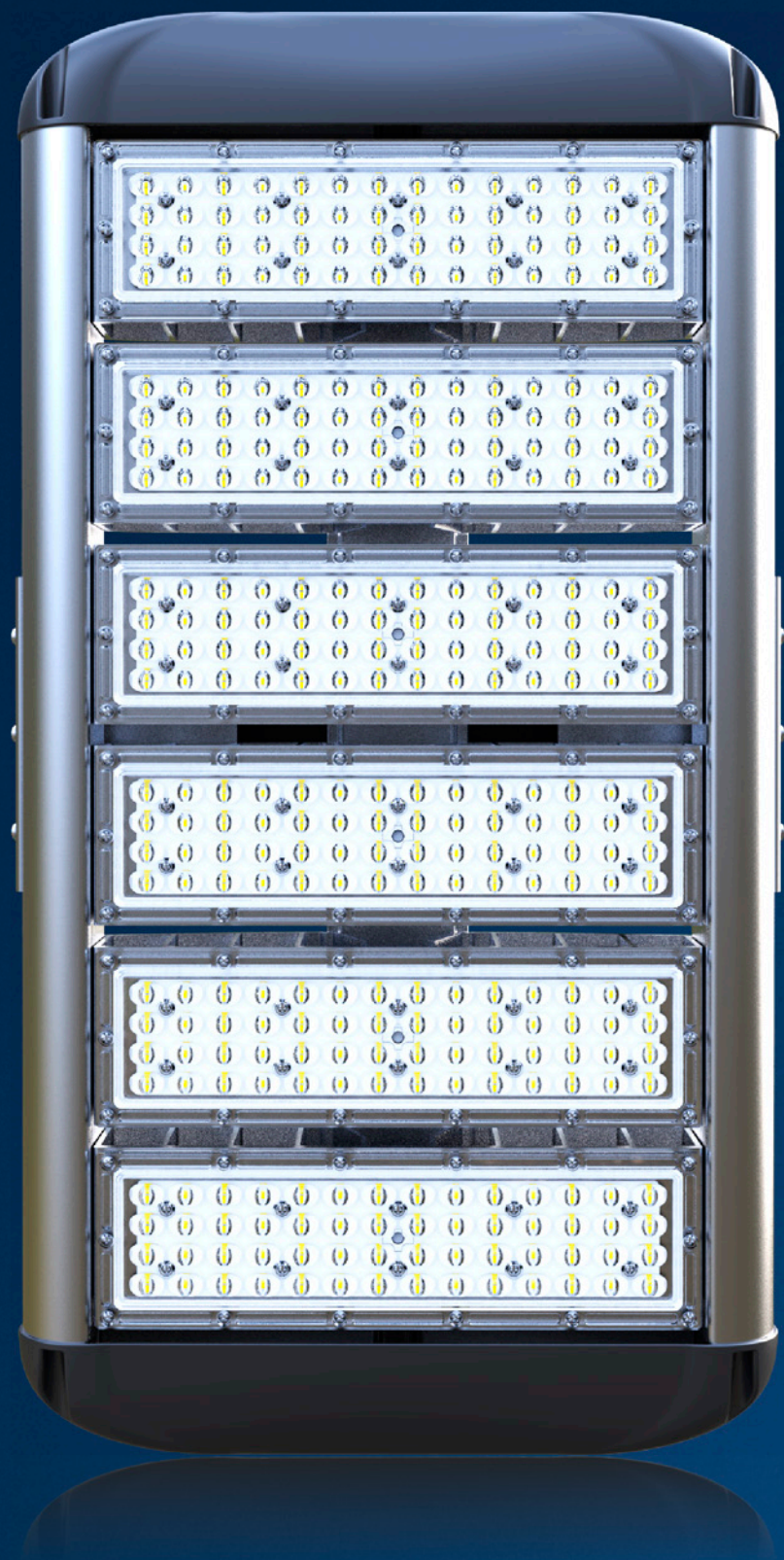
Operating Temperature:-45°C to +50°C (-49°F to 122°F)
Storing Temperature:-45°C to +80°C (-49°F to 176°F)



SPECIFICATIONS

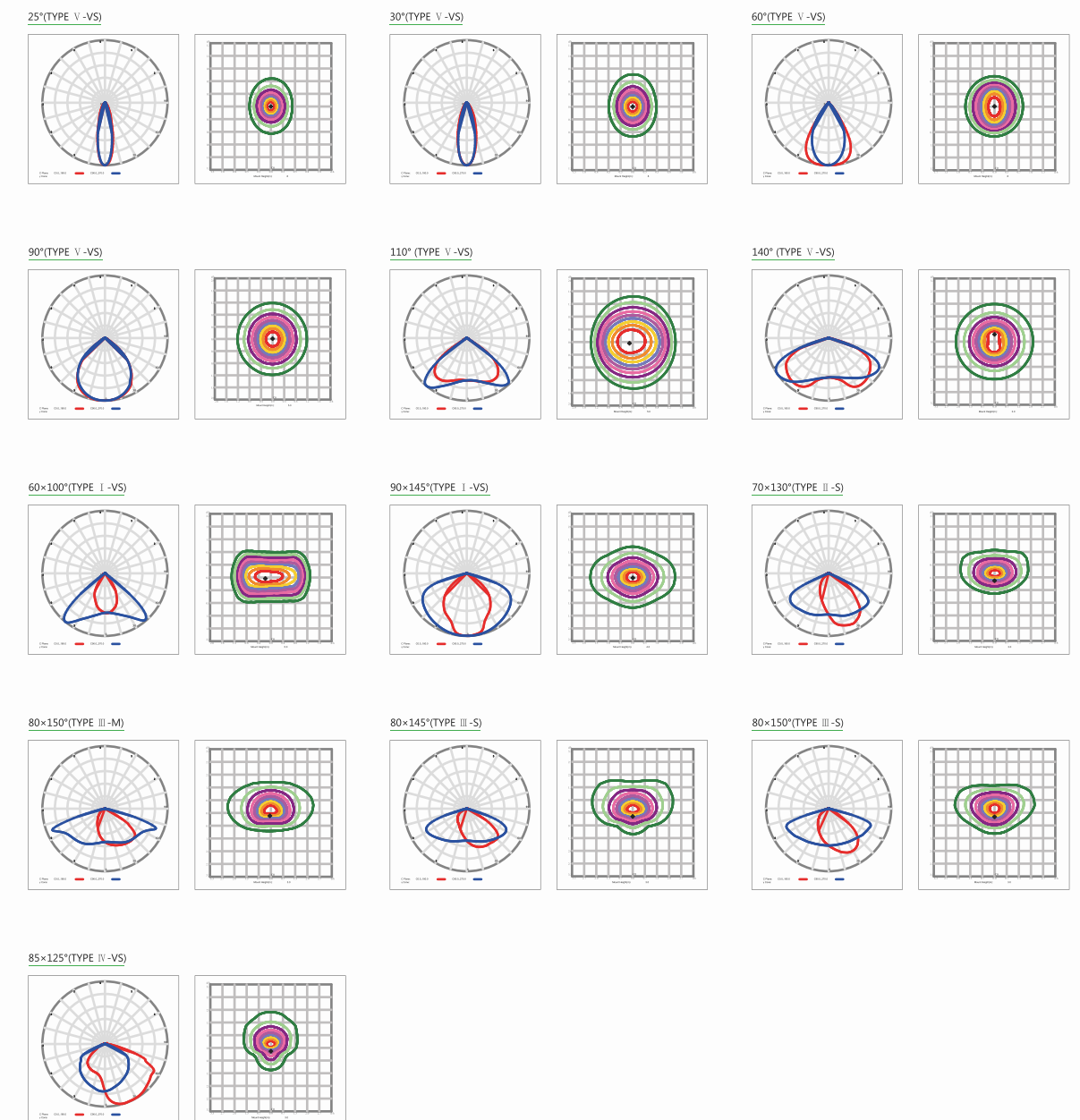
Part#	Power	NO. of Modules	Efficacy(IES)	Total Lumen	N.W	Product Dimensions
EO-ED-75U	75W	1	137LPW	10,275lm	5.4kg/11.9lbs	351x410x175mm 13.8x16.1x6.9in
EO-ED-100U	100W	2	154LPW	15,400lm	6.5kg/14.3lbs	448x410x175mm 17.6x16.1x6.9in
EO-ED-150U	150W	2	140LPW	21,000lm	6.5kg/14.3lbs	448x410x175mm 17.6x16.1x6.9in
EO-ED-200U	200W	3	145LPW	29,000lm	7.5kg/16.5lbs	542x410x175mm 21.3x16.1x6.9in
EO-ED-240U	240W	3	137LPW	32,880lm	7.5kg/16.5lbs	542x410x175mm 21.3x16.1x6.9in
EO-ED-300U	300W	4	140LPW	42,000lm	7.9kg/17.4lbs	702x410x175mm 27.6x16.1x6.9in
EO-ED-450U	450W	6	140LPW	63,000lm	14.8kg/32.6lbs	850x410x175mm 33.8x16.1x6.9in





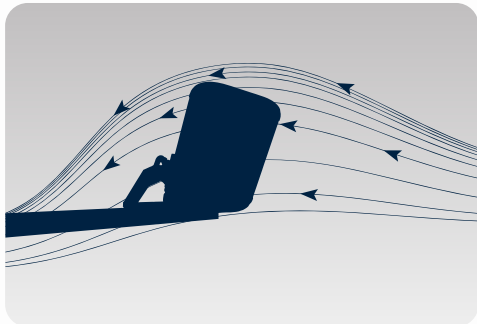
PHOTOMETRICS

Suitable for a wide range of applications, Edge flood light offers a choice of 13 optics for efficient and effective lighting. Precise light control and optimum light distribution help maximise comfort and energy savings.

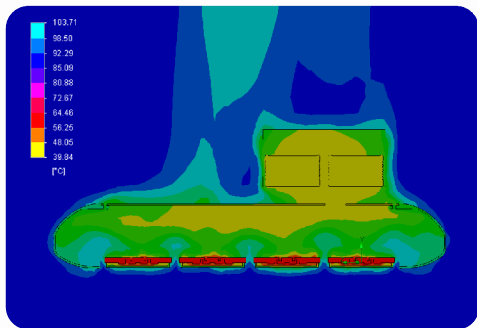


WIND RESISTANCE MINIMIZATION

It is essential to consider the wind resistance of the flood lights and their suitability for existing or proposed installation in the outdoors. Please note that flood lights mounted horizontally on the ground, such as asymmetrical distribution help to reduce wind resistance and allow better control of spill light.



THERMAL OPTIMIZATION



The proprietary thermal efficiency design with passive cooling maximizes heat dissipation to ensure safe operation and good lifetime performance of the luminaire in high temperature environments.





INSTALLATION

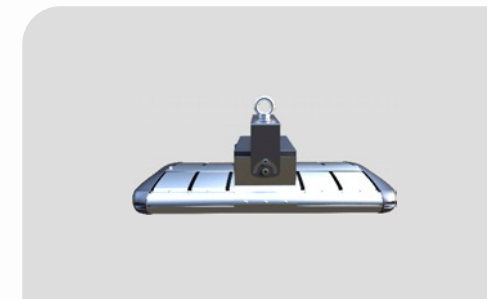
For high performance and long term reliability, the light should be installed in free air.

Hanging Ring Mount

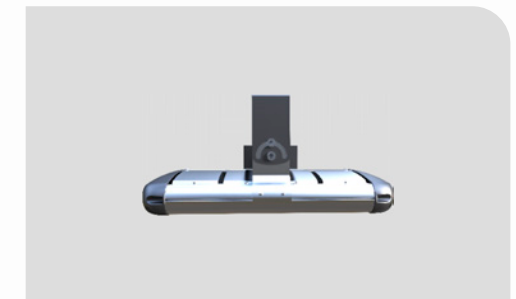
1. Tighten the NUT attached to the hanging ring to ensure the hanging ring is securely connected to the light fixture.
2. Hang the ring to the field supplied by the mounting hook or chain.
3. Wiring.(Connect supply wires to luminaire wire leads per the wiring diagram using methods that comply with all applicable codes.)

Universal Bracket

1. Rotate the bracket to the desired angle and tighten screw to lock it.
2. Bolt the universal mounting bracket to the field mounting point. Bolt the center point before the two side points. Tighten the bolts to wrench tight.
3. Wiring.(Connect supply wires to luminaire wire leads per the wiring diagram using methods that comply with all applicable codes.)



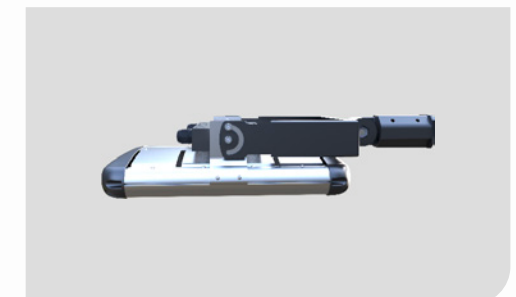
Hanging Ring



180° U Bracket



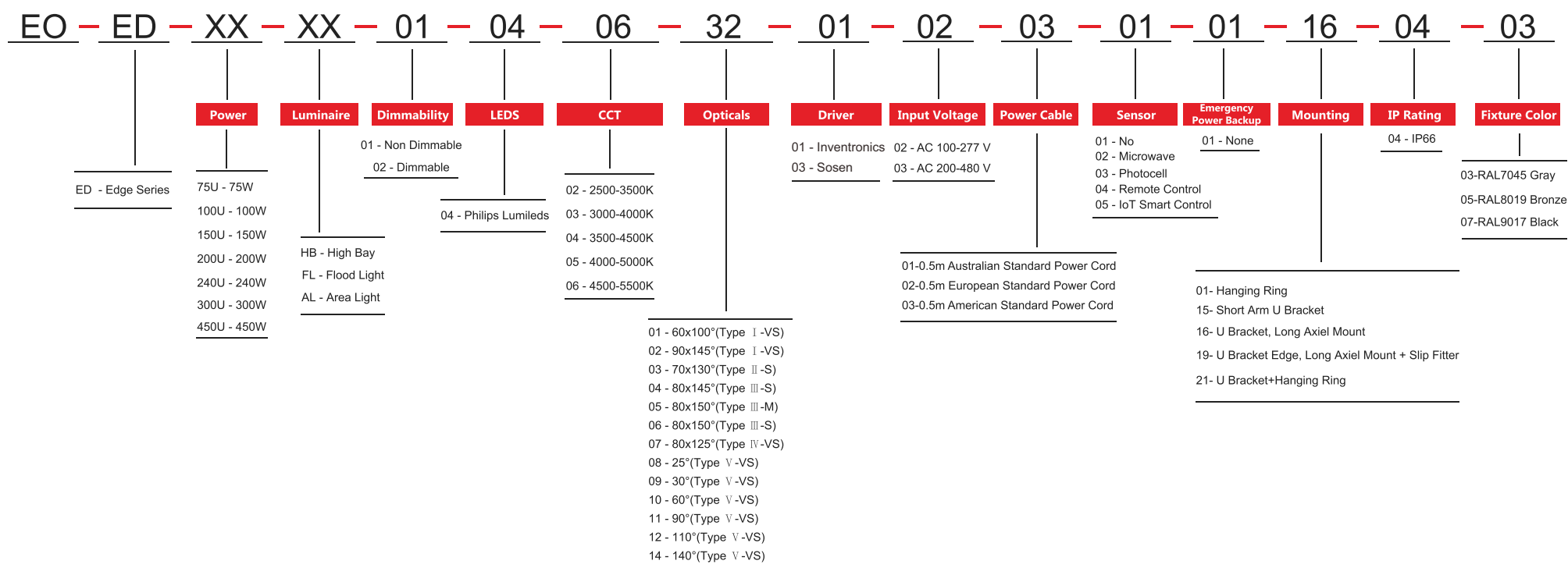
360° Heavy Duty U Bracket



180° Heavy Duty U Bracket + Slip Fitter

ORDERING INFORMATION

E-LITE semicon



E-Lite Semiconductor Co., Ltd.
Headquarter & Factory
Website: <http://www.elitesemicon.com>