

# **Hercu<sup>TM</sup>**

## **SERIES**

# **LED Bulkhead**

**E-LITE** semicon





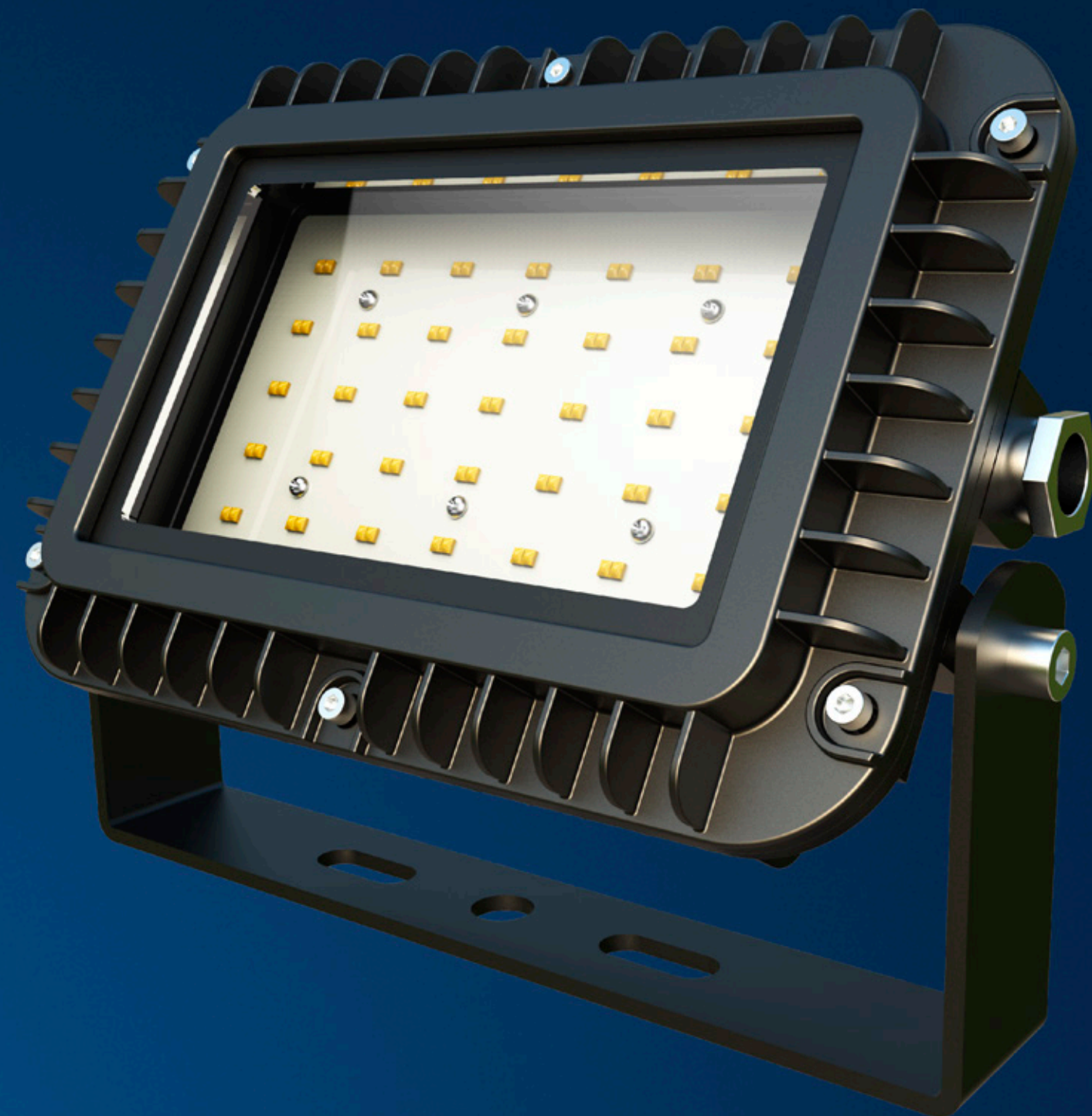
# THE LANGUAGE OF THE SOLID

Hercu born from the idea for industrial level application at first place.  
Solid structure based on the tough materials,  
one piece die casting housing enhance its essence of industrial standard.

One simple and elegant exterior light fitting with unique design  
which makes it dust and water proof at IP66 rating.



**E-LITE** semicon / [Hello@elitesemicon.com](mailto:Hello@elitesemicon.com) / [www.elitesemicon.com](http://www.elitesemicon.com)

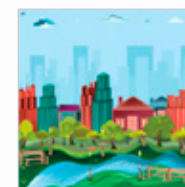




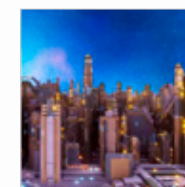


## APPLICATIONS

LED luminaire that can be utilized in versatile application ranges including damp environments, security lighting in industries, loading dock, workshop, corridors, platform, rest areas and outside walls of buildings.



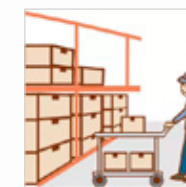
Damp  
Environments



Security Lighting  
in Industries



Loading Dock



Workshop



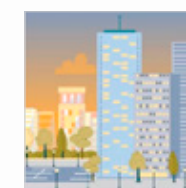
Corridors



Platform



Rest Areas



Outside Walls  
of Buildings



# FEATURES

- Easy and quick installation
- Superior lumen and color maintenance
- With high efficiency low power loss driver
- Best in class lumen per watt - more light for less cost
- Aluminum pressure Die Cast housing body for excellent mechanical stability







## PERFORMANCE



30W / 60W



120lm/W



Philips Lumileds



100-277 VAC



0.95 min



≥70



4500~5500K(2500~5500K optional)



L70>100,000hours



45°,110°



IP66



IK10



PC 3000U



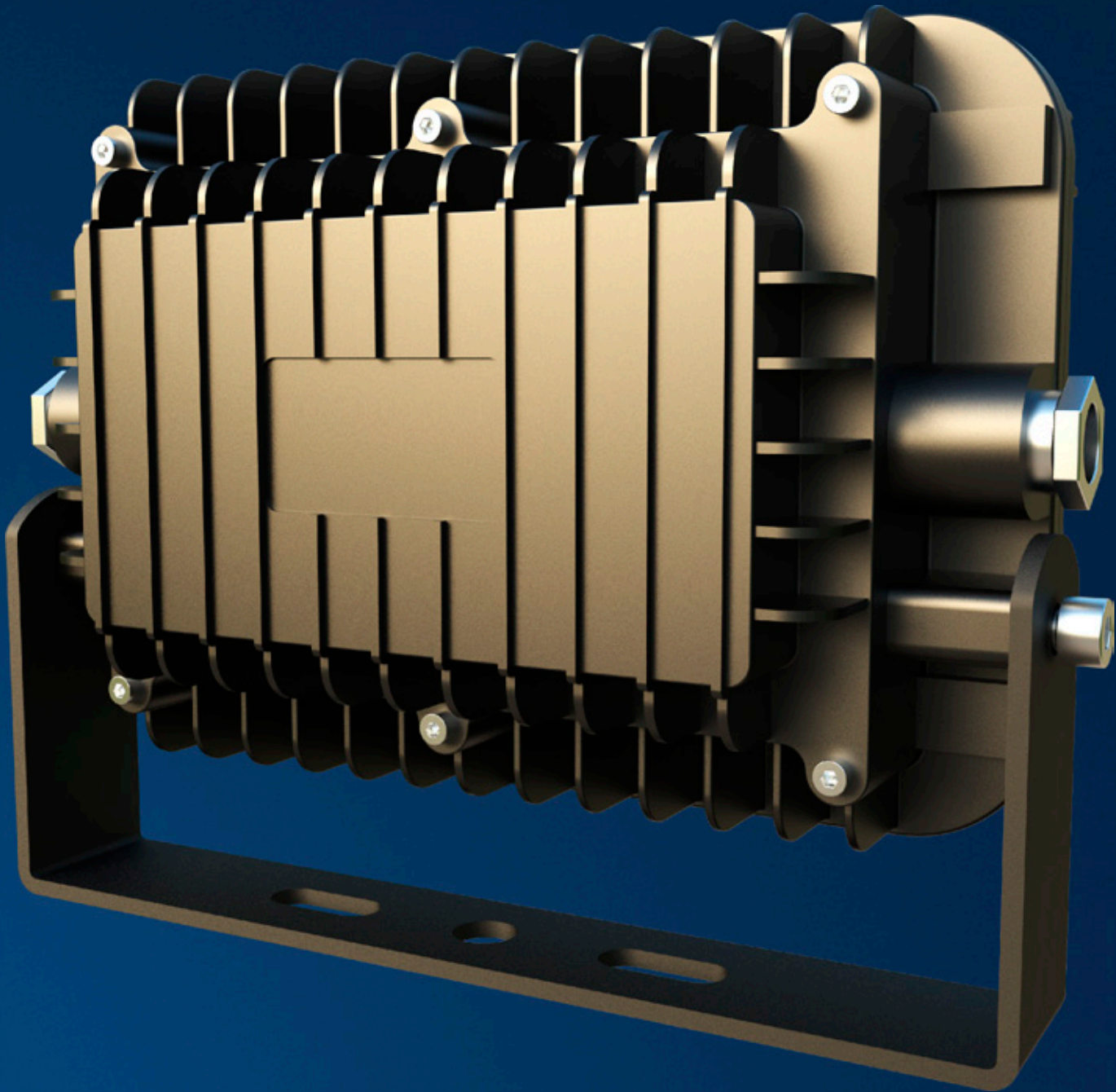
Operating Temperature:-40°C to +50°C (-40°F to 122°F)  
Storing Temperature:-40°C to +80°C (-40°F to 176°F)





# SPECIFICATIONS

Part#	Power	Efficacy(IES)	Total Lumen	N.W	Product Dimensions
EO-BHHC-30	30W	120lm	3,600lm	3.6kg/7.9lbs	257×174×127mm 10.1×6.9×5in
EO-BHHC-60	60W	120lm	7,200lm	3.4kg/7.6lbs	257×174×127mm 10.1×6.9×5in

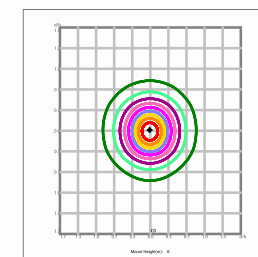
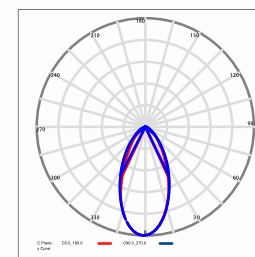




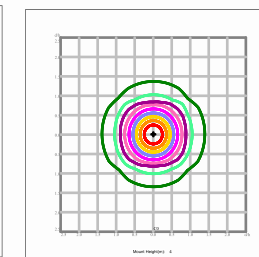
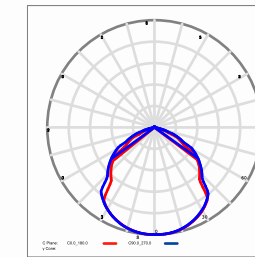


# PHOTOMETRICS

45 DEGREE (30W)



110 DEGREE (60W)

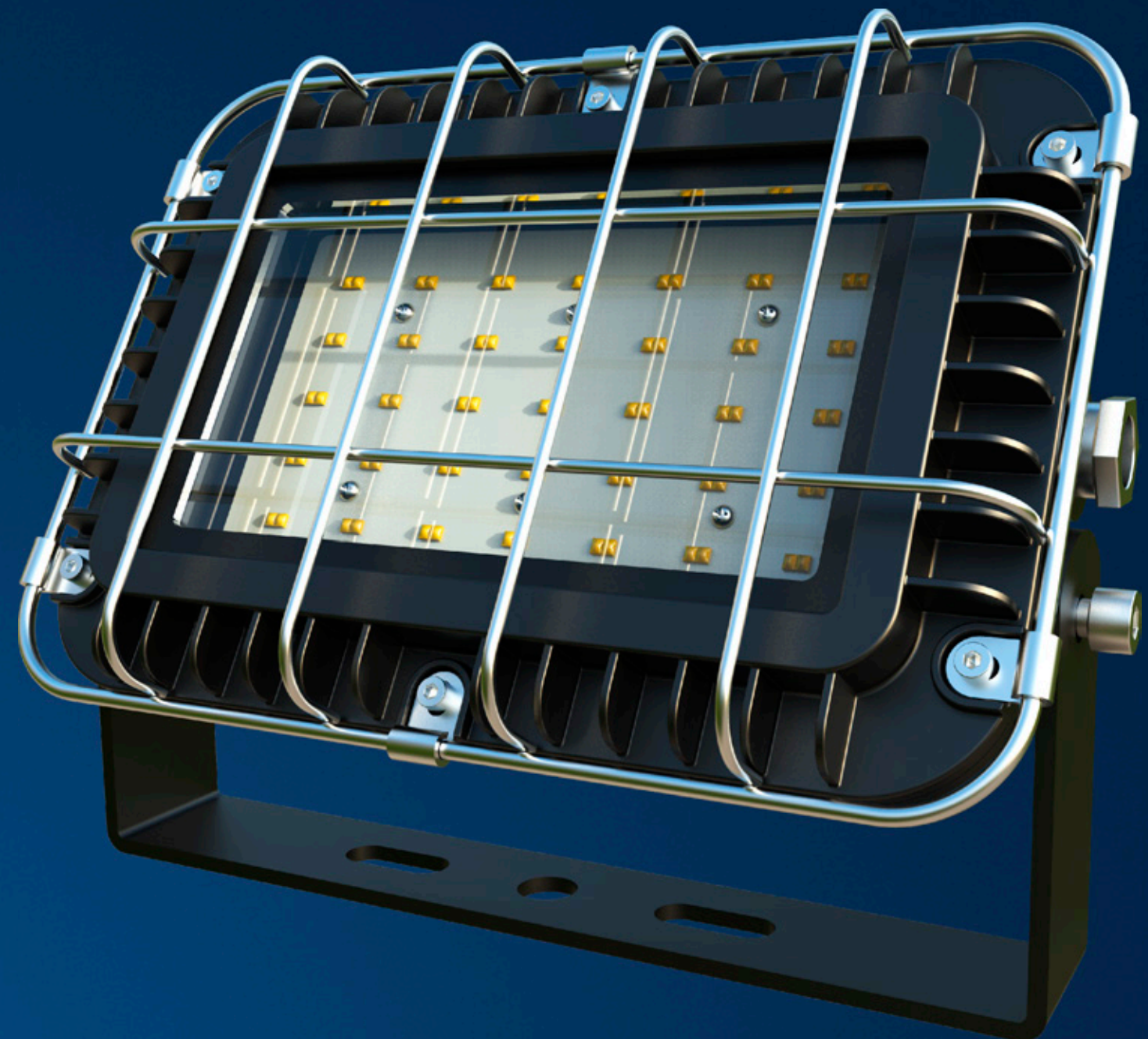
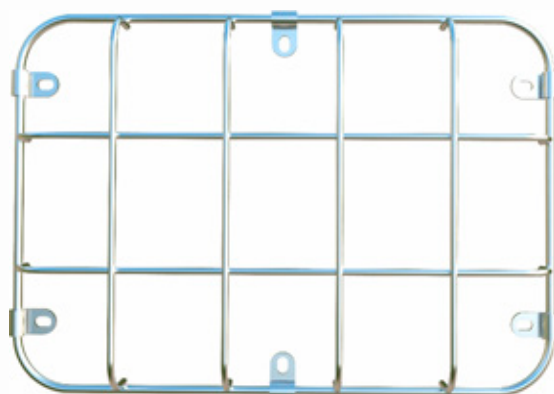




# MORE PROTECTION MORE SERCUITY

Protective wire guard with industrial level,  
providing one more protection for the bulk head light,  
is used for some special tough lighting applications.

Protection Mask





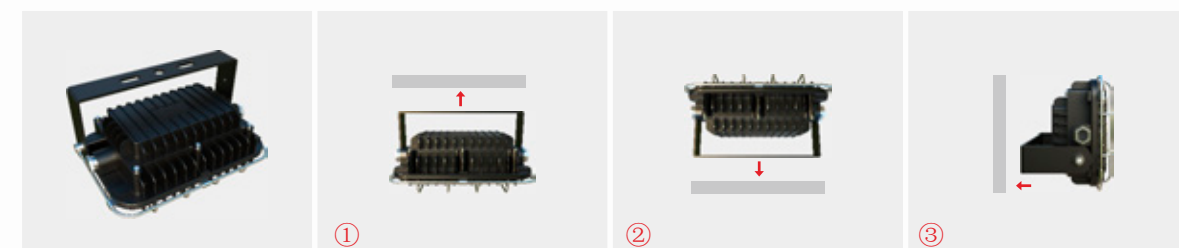


# INSTALLATION

For high performance and long term reliability, the light should be installed in free air.

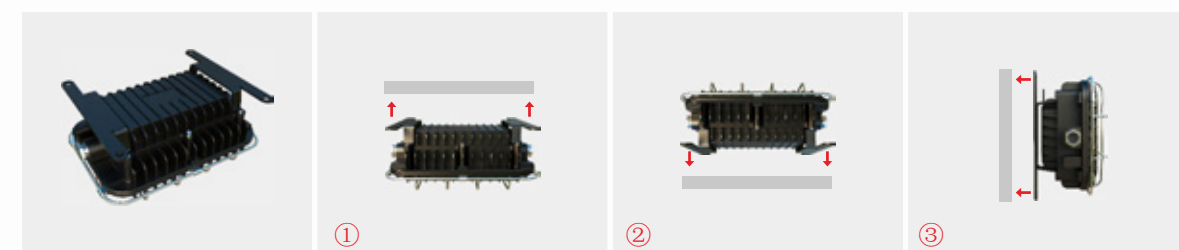
## Standard U Bracket

1. Select the installation position and location
2. Drill holes on the installation location according to the screw holes spacing of the bracket of lamps
3. Fix the fixture on the installation location, adjust the angle, and then fasten screws.
4. Wiring fixture to city power in right way.



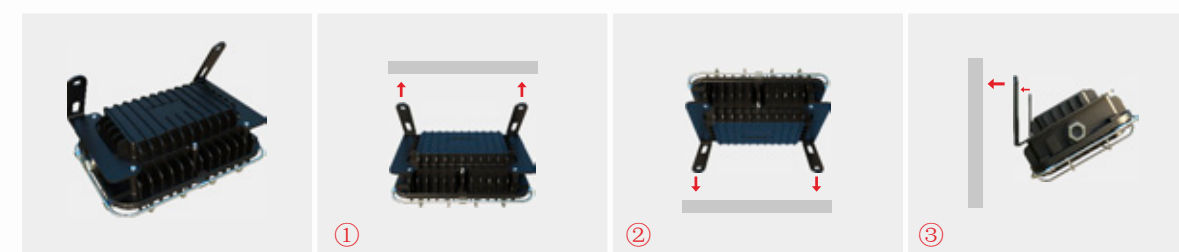
## Flush Bracket

1. Select the installation position and location
2. Drill holes on the installation location according to the screw holes spacing of the bracket of lamps
3. Fix the fixture on the installation location, adjust the angle, and then fasten screws.
4. Wiring fixture to city power in right way.



## 30° Angle Bracket

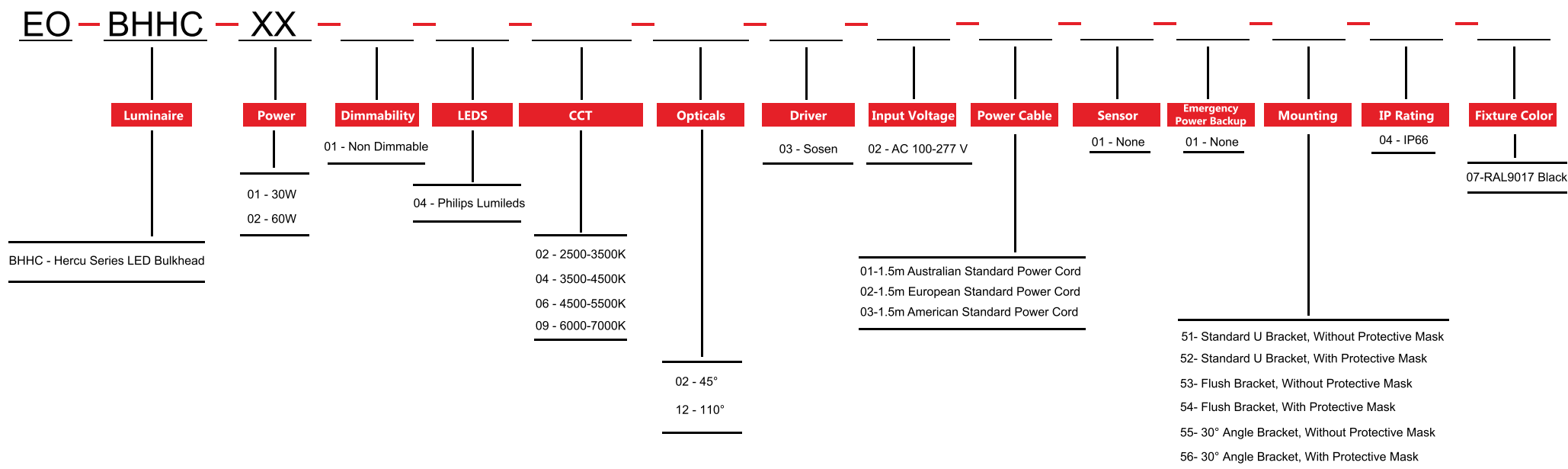
1. Select the installation position and location
2. Drill holes on the installation location according to the screw holes spacing of the bracket of lamps
3. Fix the fixture on the installation location, adjust the angle, and then fasten screws.
4. Wiring fixture to city power in right way.





## ORDERING INFORMATION

**E-LITE** semicon



E-Lite Semiconductor Co., Ltd.  
Headquarter & Factory  
Website: <http://www.elitesemicon.com>