

A nighttime street scene featuring a large, ornate building with a prominent dome, illuminated by warm lights. The street is lined with historic buildings, and the sky is a deep blue. The scene is captured from a low angle, looking down the street towards the illuminated dome. The lighting is a mix of warm yellow from the building lights and cooler blue from the twilight sky. The overall atmosphere is vibrant and urban.

**ION™**

**SERIES**

**LED**

**Area & Flood Light**

**E-LITE** semicon



# OMNIDIRECTIONAL LIGHTING

Flood light, as its name implies, is a point light source that irradiates in all directions, giving out soft and transparent light. Its irradiation range can be arbitrarily adjusted.

Ion features powerful light output up to 52,800lm, a choice of high-performance asymmetrical and symmetrical optics, and U-shaped universal mounting bracket for installation versatility. Its specially designed heat sink incorporates aesthetics and functionality to ensure reliability and long service life.







## FEATURES

- Robust aluminum die-cast housing
- Sleek and slim aesthetic design
- Multiple choice of asymmetrical and symmetrical lens
- IP66 and IK08 rated for harsh outdoor environment
- 5 Years Warranty

## APPLICATIONS



General  
Flood  
Lighting



Security  
Lighting



Billboard  
Lighting



Area  
Lighting



High Mast  
Lighting



Facade  
Lighting



# PERFORMANCE



30W-400W



130lm/W



Philips Lumileds



AC 100-277V



0.95 min



≥70



4500-5500K (Standard)  
2500-6500K (Optional)



L70>120,000hours



25°,30°,55x150°,60°,60x150°,70x140°,70x150°,90°,95x150°



IP66



IK08



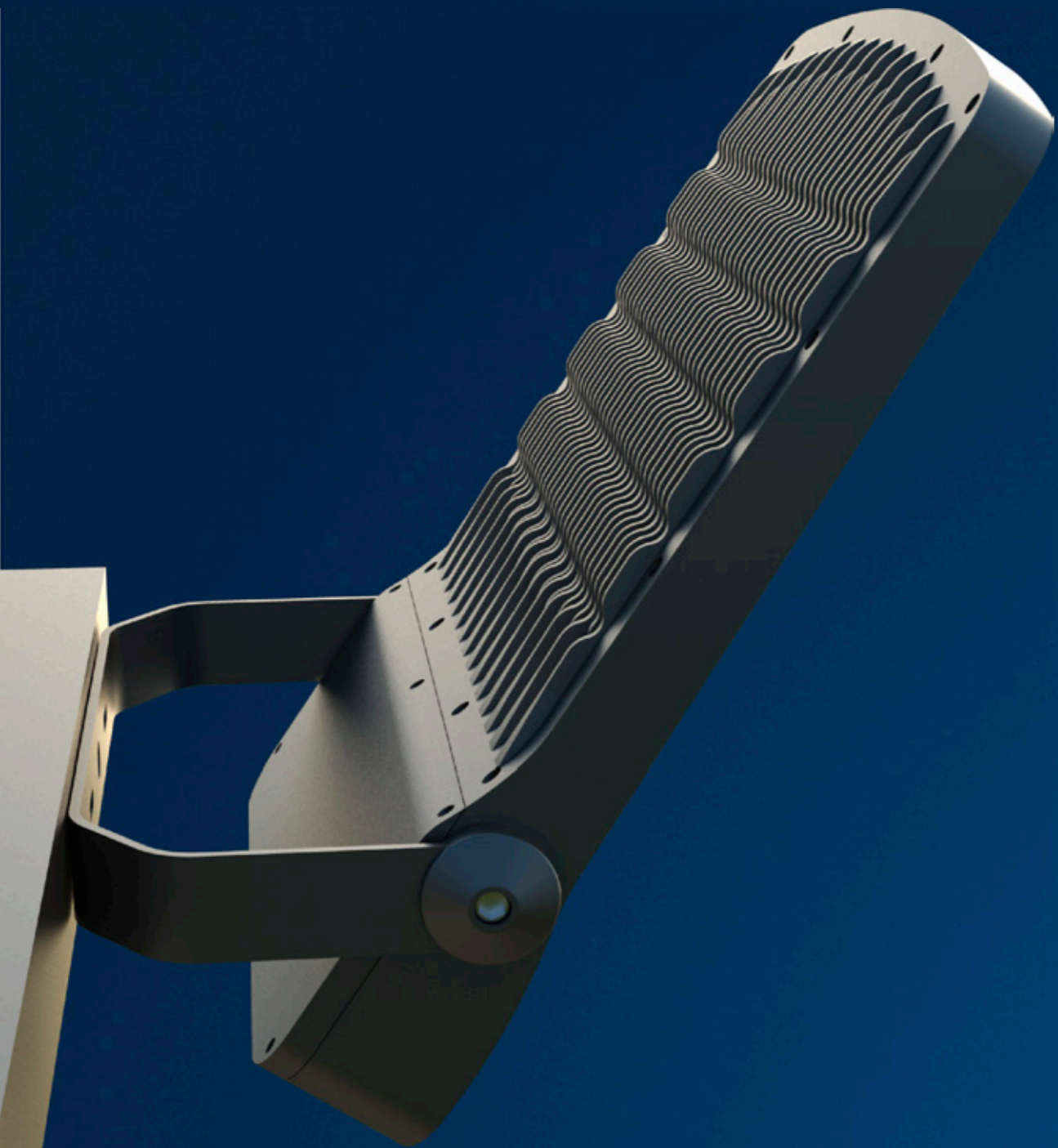
Corrosive resistant polyester powder coat finish



Operating Temperature:-40°C to +50°C (-40°F to 122°F)  
Storing Temperature:-44°C to +80°C (-40°F to 176°F)

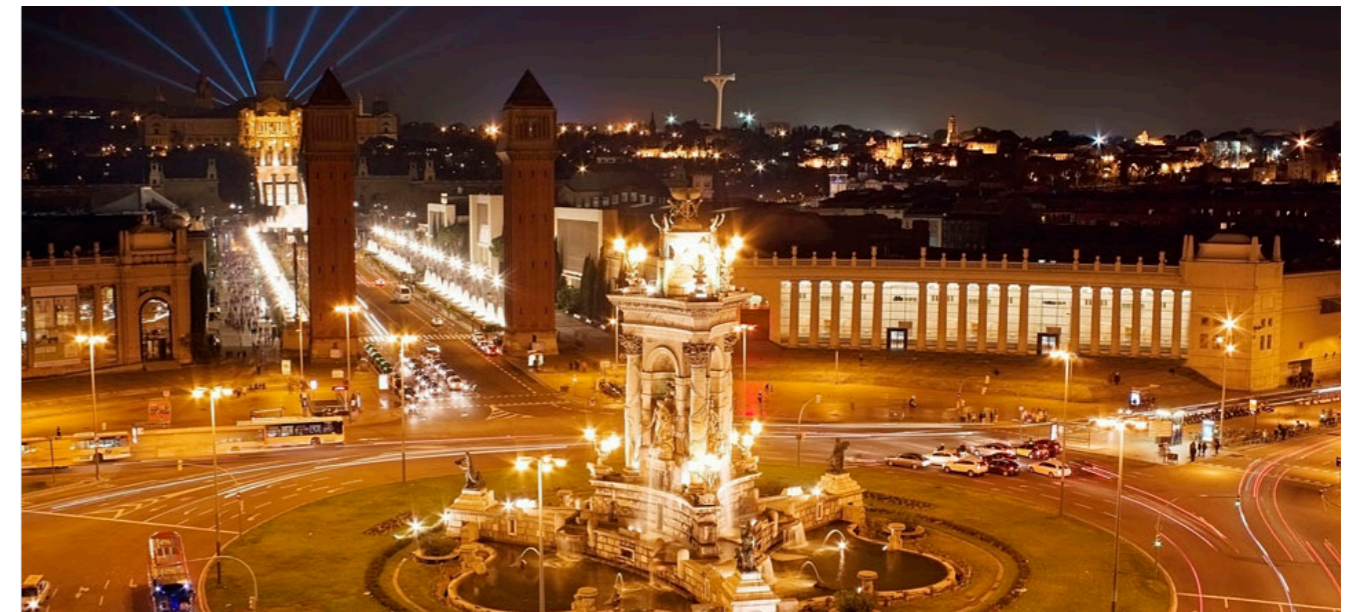






## SPECIFICATIONS

Model	Power	Efficacy(IES)	Total Lumen	N.W	Product Dimensions
EL-ARIN-30	30W	132LPW	3,960lm	3.5kg / 7.7lbs	320×224×50mm 12.6×8.8×2.0in
EL-ARIN-50	50W	129LPW	6,450lm	3.5kg / 7.7lbs	320×224×50mm 12.6×8.8×2.0in
EL-ARIN-70	70W	133LPW	9,310lm	5.2kg / 11.5lbs	421×291×62mm 16.6×11.5×2.4in
EL-ARIN-100	100W	132LPW	13,200lm	5.2kg / 11.5lbs	421×291×62mm 16.6×11.5×2.4in
EL-ARIN-150	150W	130LPW	19,500lm	12.2kg / 26.9lbs	520×342×65mm 20.5×13.5×2.6in
EL-ARIN-200	200W	130LPW	26,000lm	12.2kg / 26.9lbs	520×342×65mm 20.5×13.5×2.6in
EL-ARIN-300	300W	133LPW	39,900lm	14kg / 30.9lbs	620×450×84mm 24.4×17.7×3.3in
EL-ARIN-400	400W	132LPW	52,800lm	14kg / 30.9lbs	620×450×84mm 24.4×17.7×3.3in

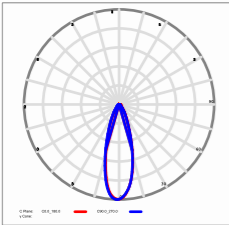




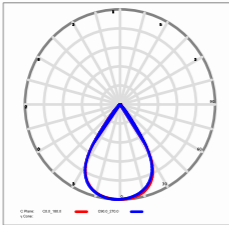
# PHOTOMETRICS

30W / 70W / 150W / 300W

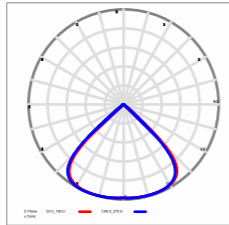
30 Degree Lens



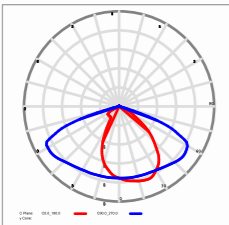
60 Degree Lens



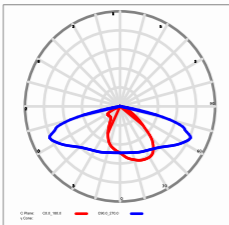
90 Degree Lens



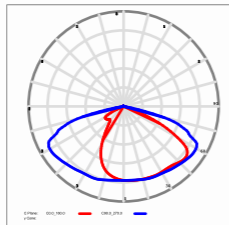
70x140 Degree Lens



70x150 Degree Lens

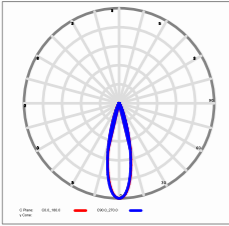


95x150 Degree Lens

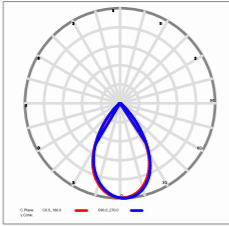


50W / 100W / 200W / 400W

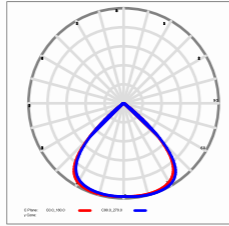
25 Degree Lens



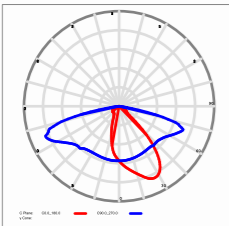
60 Degree Lens



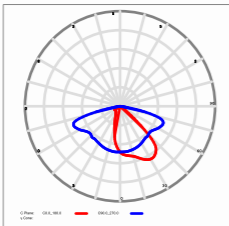
90 Degree Lens



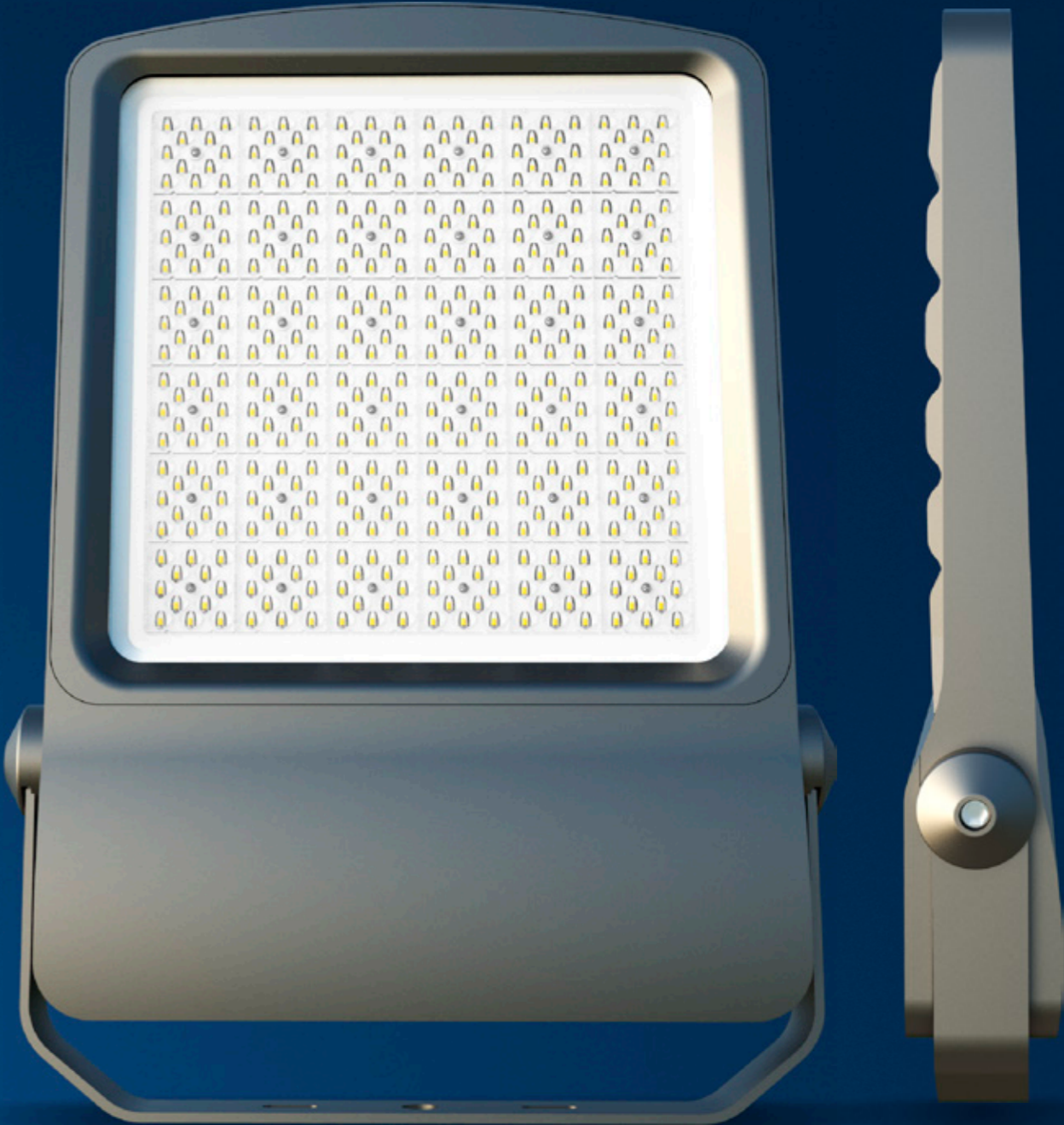
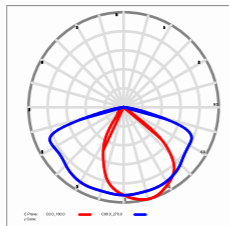
55x150 Degree Lens



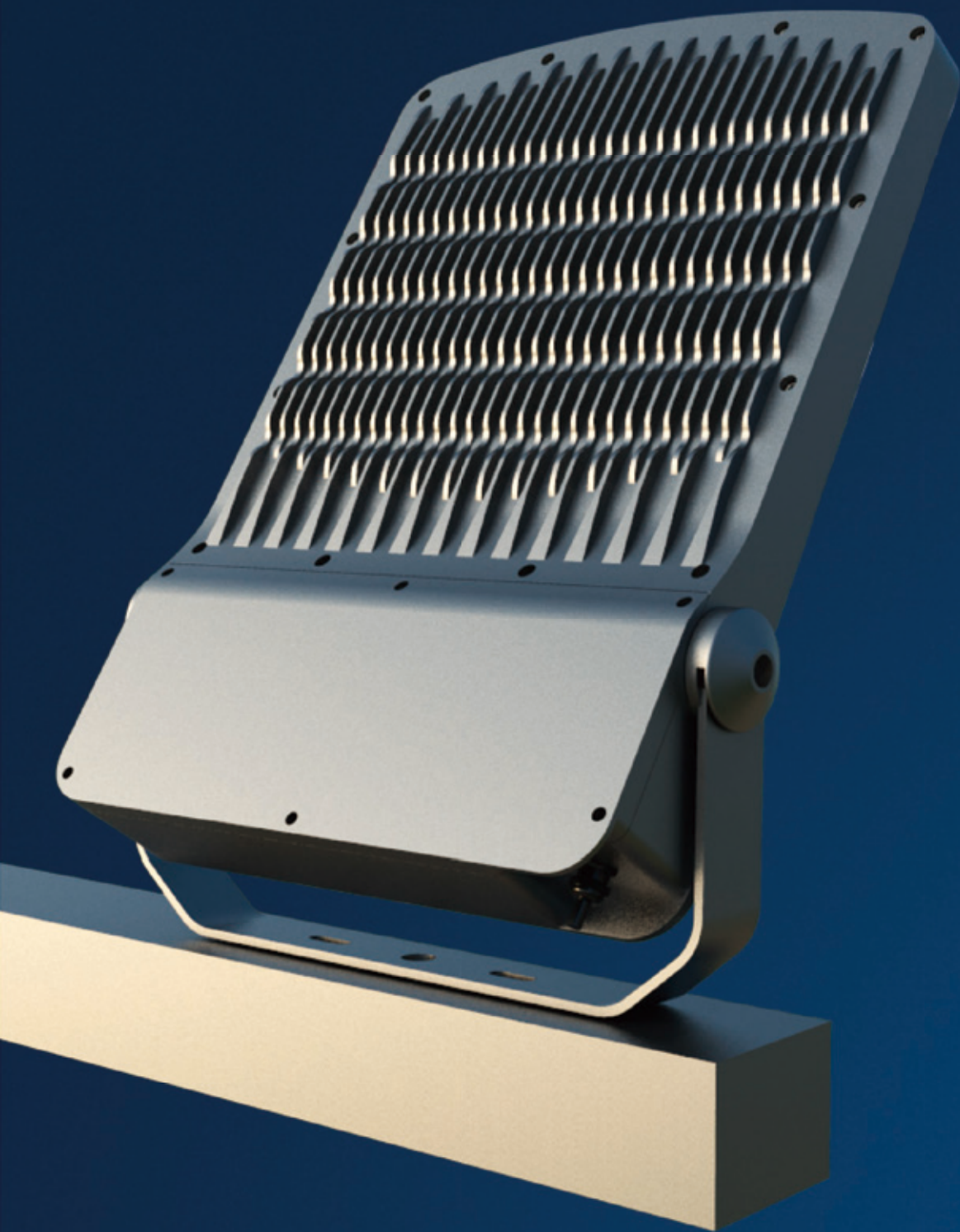
60x150 Degree Lens



75x150 Degree Lens







# INSTALLATION

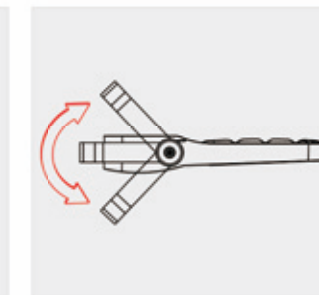
For high performance and long term reliability, the light should be installed in free air.

## Universal Bracket

1. Rotate the bracket to the desired angle and tighten screw to lock it.
2. Bolt the universal mounting bracket to the field mounting point. Bolt the center point before the two side points. Tighten the bolts.
3. Wiring. (Connect supply wires to luminaire wire leads per the wiring diagram using methods that comply with all applicable codes.)



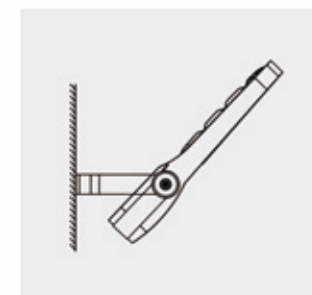
Fixed to the wall



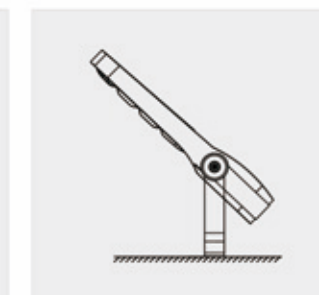
Rotate to adjust the angle



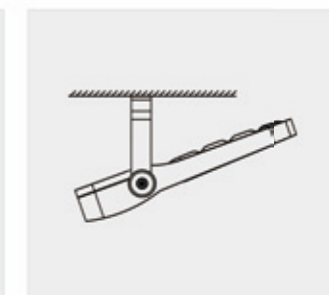
Connect the power cord



Wall mounting



Pedestal installation



Ceiling installation



# ORDERING INFORMATION

