



E-LITE semicon

Tri-proof Linear

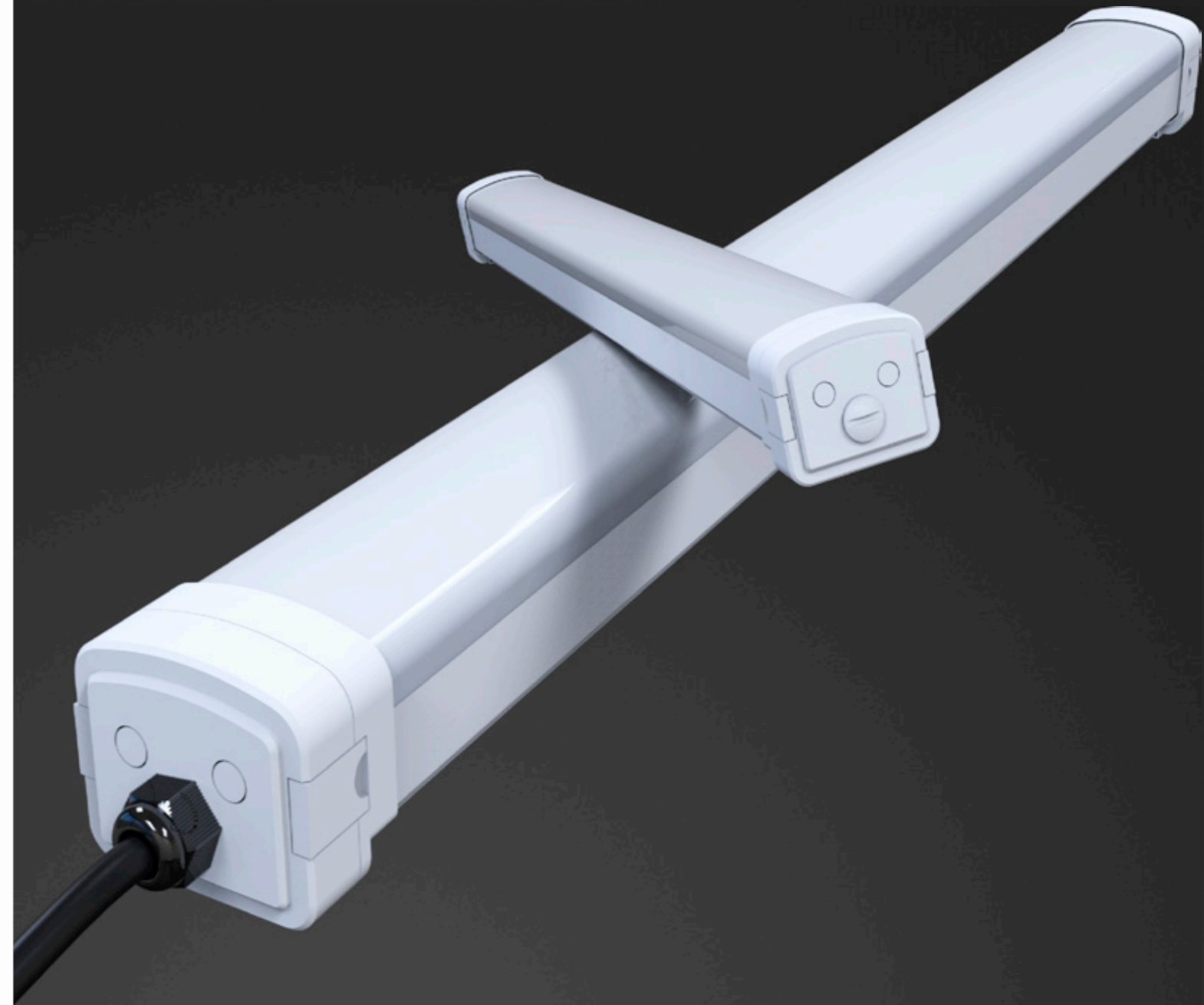
LUNA SERIES

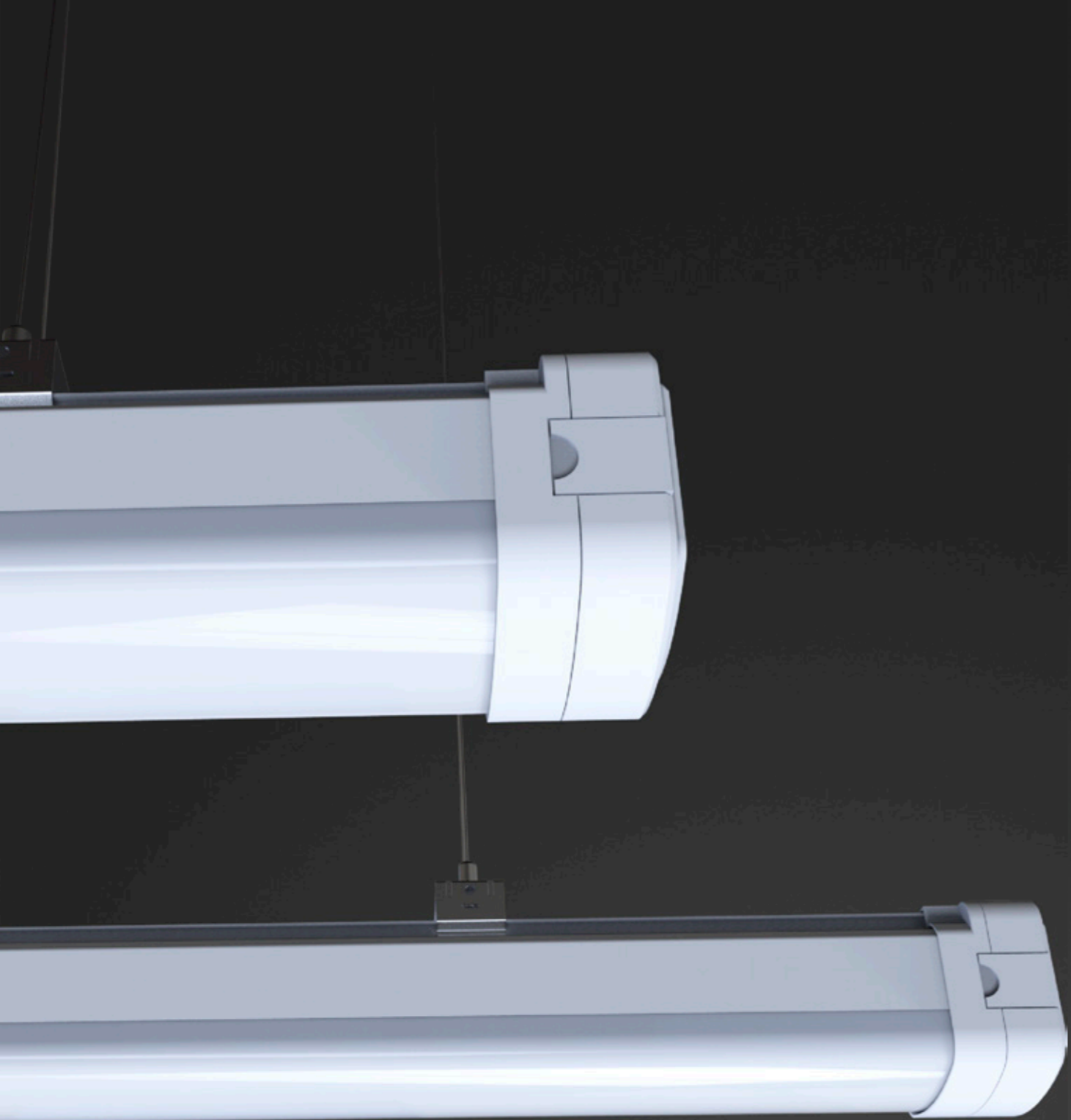
TRIPLE PROTECTION

5 TIMES LIFE SPAN

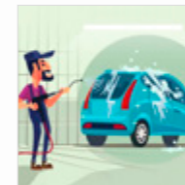
Luna is a highly durable and robust luminaire, absolutely dustproof, waterproof and corrosion-proof, designed for garage, workshop, basement and locker rooms, and any other area of application, where harsh conditions have to be countered.

As a super-bright, energy-efficient alternative to traditional tube or strip light fixtures, Luna's life expectancy is 50,000 hours—5 times as long as fluorescent or metal-halide (MH) fixtures.

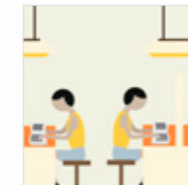




APPLICATIONS



Car Wash



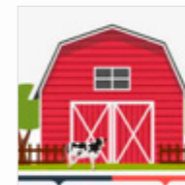
Task Lighting



Indoor Garage



Retail Stores



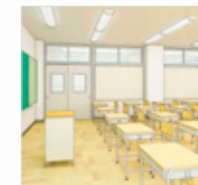
Poultry & Livestock Farming



Docks



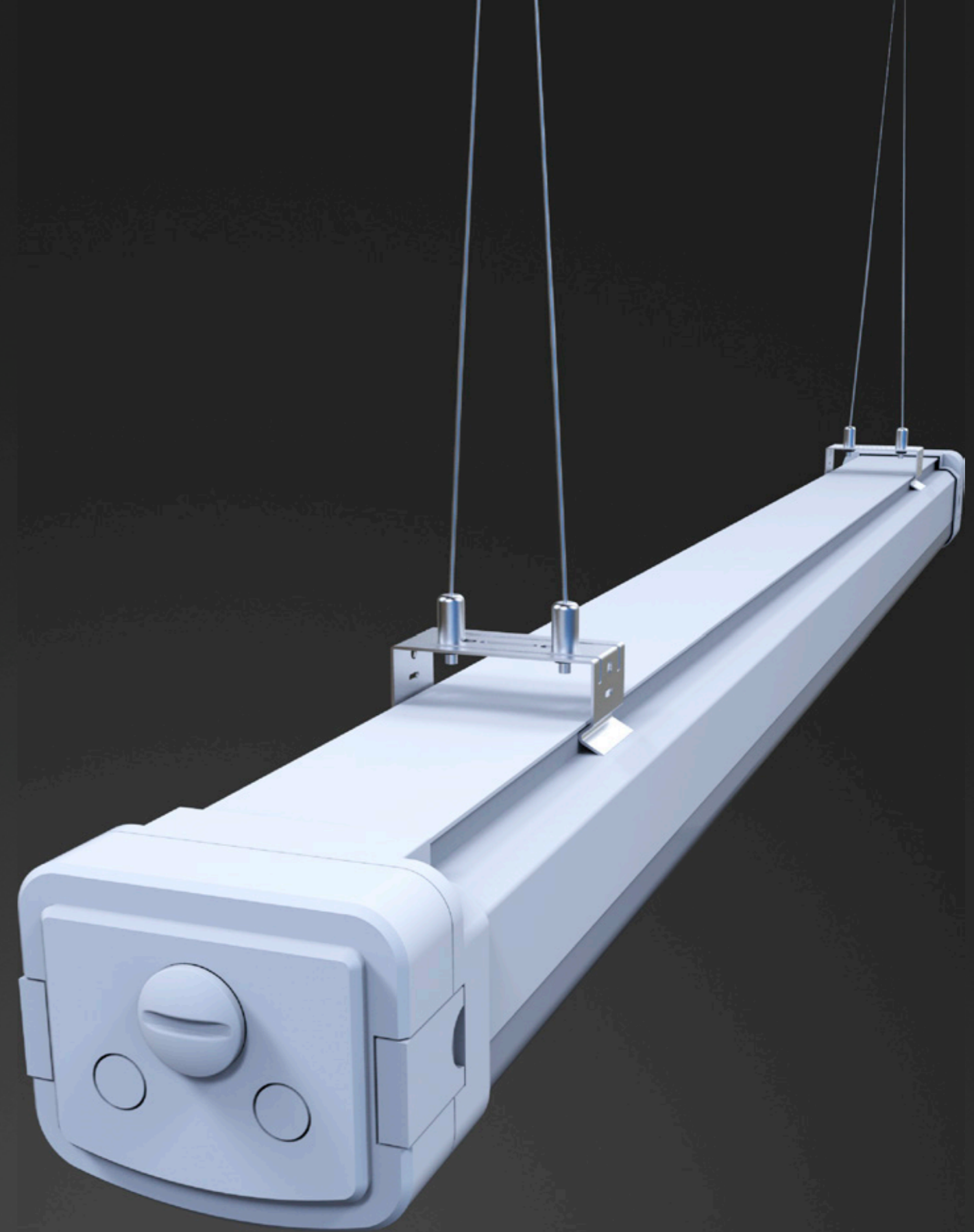
Subway

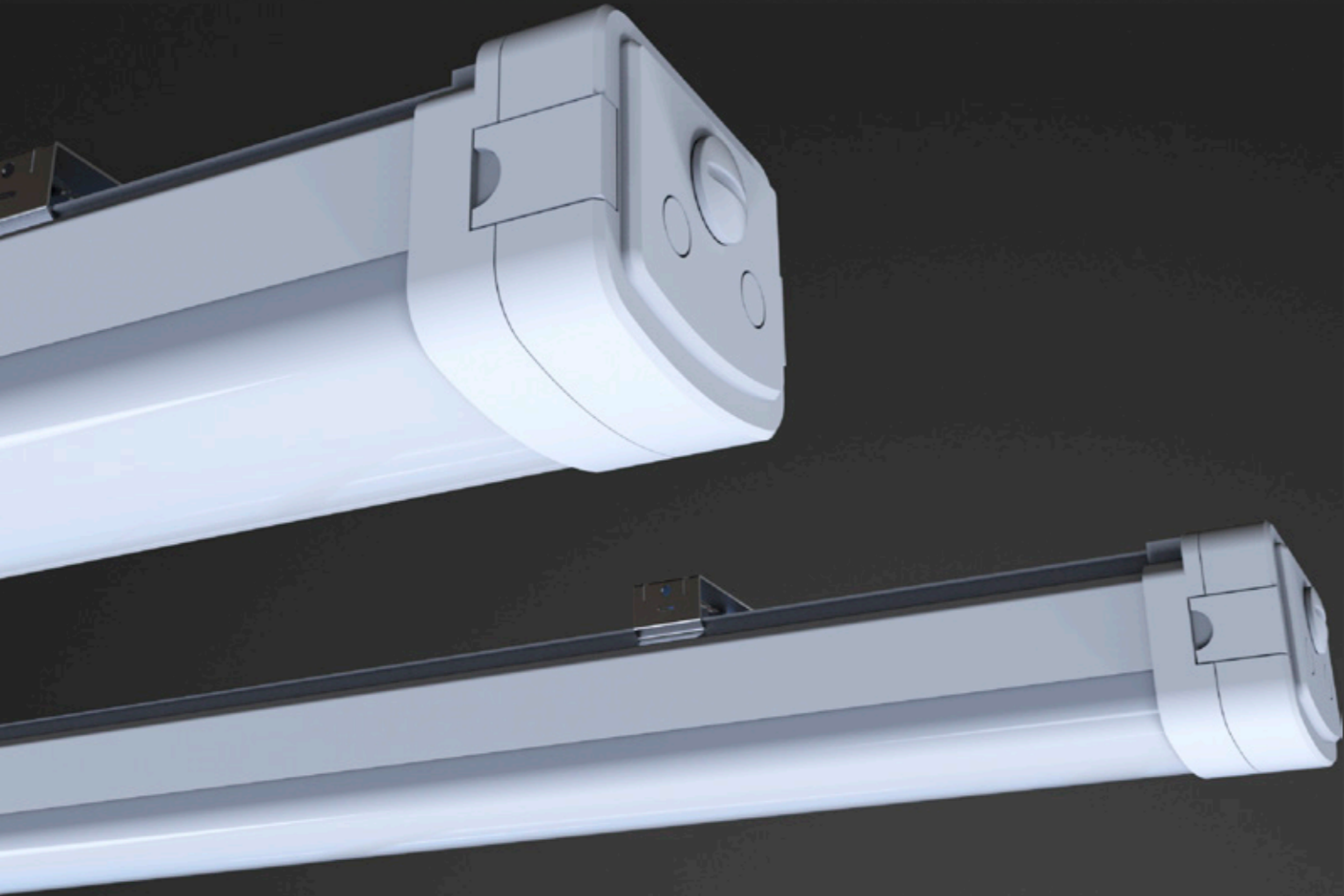


Classroom













FEATURES

- Quick-Snap end caps allowing for tool-free wiring and assuring a very fast and almost effortless installation.
- Stand alone or linkable Installation.
- Dustproof, waterproof and corrosion-proof.
- Instant illumination, no flicker, no buzz. No UV emission.
- Suspended or surface-mounted.
- IP66 & IK10 rated.
- DLC, ETL/cETL, CE, RoHS listed.





PERFORMANCE

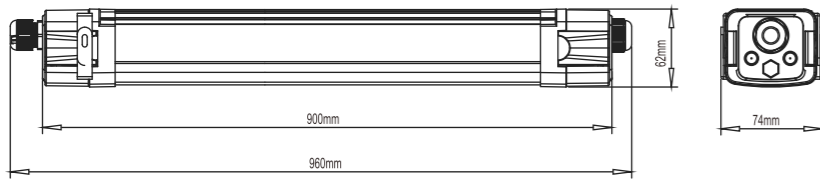
	30W / 55W / 70W
	130lm/W
	Philips Lumileds
	100-277 VAC
	0.95 min
	≥70
	4500~5500K (2500~5500K optional)
	L70>100,000hours
	120°
	IP66
	IK10
	Operating Temperature:-45°C to +45°C (-49°F to 113°F) Storing Temperature:-45°C to +80°C (-49°F to 176°F)



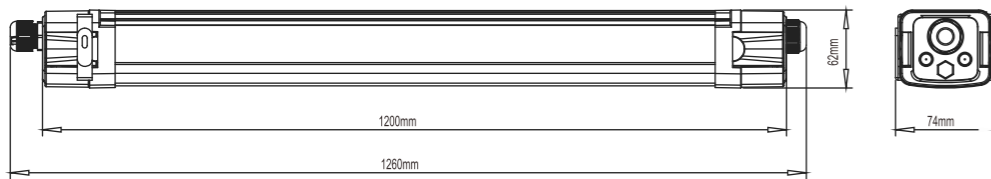
SPECIFICATIONS

Part#	Power	Efficacy(lES)	Total Lumen	N.W	Product Dimensions
EL-LULN-30	30W	130lm	3,900lm	0.9kg/2.0lbs	960x74x62mm 37.8x2.9x2.4in
EL-LULN-55	55W	130lm	7,150lm	1.35kg/3.0lbs	1260x74x62mm 49.4x2.9x2.4in
EL-LULN-70	70W	130lm	9,100lm	1.35kg/3.0lbs	1260x74x62mm 49.4x2.9x2.4in

30W



55W / 70W



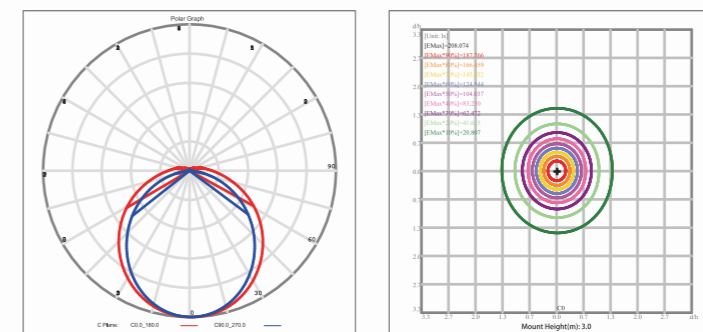


PHOTOMETRICS

Optimized Comfort

The milky optics of Luna series light reduces glare to minimum and produces very soft glow to enhance eye comfort for everyone in the environment.

120 DEGREE LENS



LINKING FIXTURES TOGETHER

Ensure supply power is off.

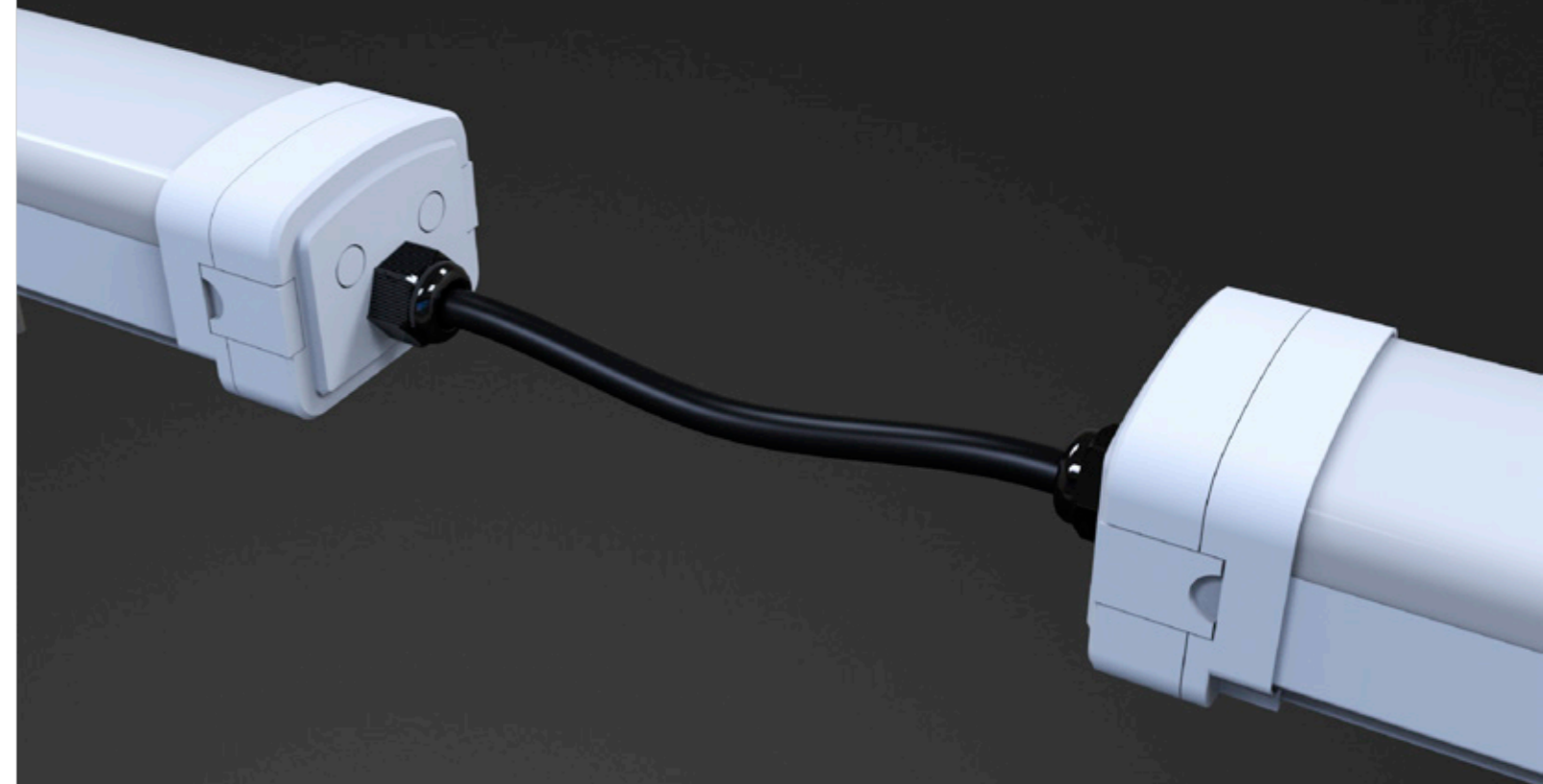
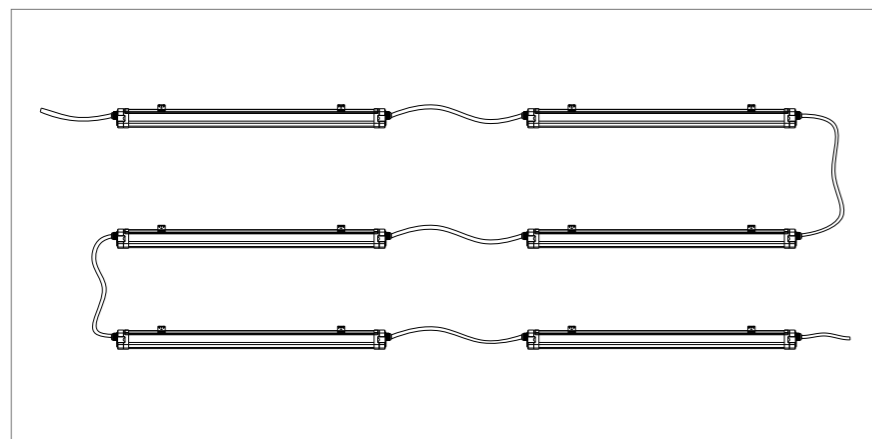
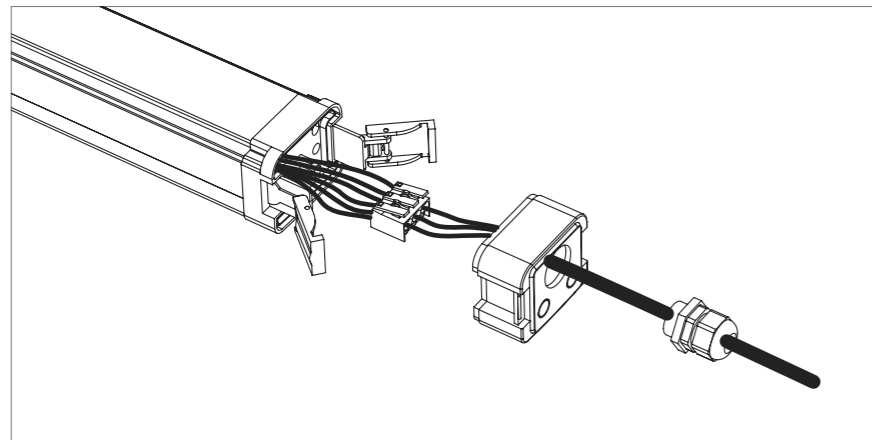
On the end opposite of the existing cord, unlatch end cap.

Remove plug from end cap.

Using included water-tight connector, run cable through end cap and tighten connector.

Attach wiring to terminal block.

Reinstall cap.



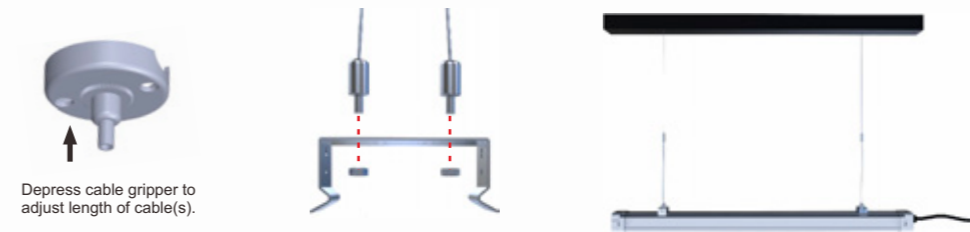


INSTALLATION

For high performance and long term reliability, the light should be installed in free air.

Hanging Installation

1. Measure hole distance according to diagram.
2. Attach cables to hanging clips.
3. Install ceiling mounts (hardware not included).
4. Snap light into clips to secure.
5. Adjust height using cable gripper.
6. With supply power off, connect wiring.

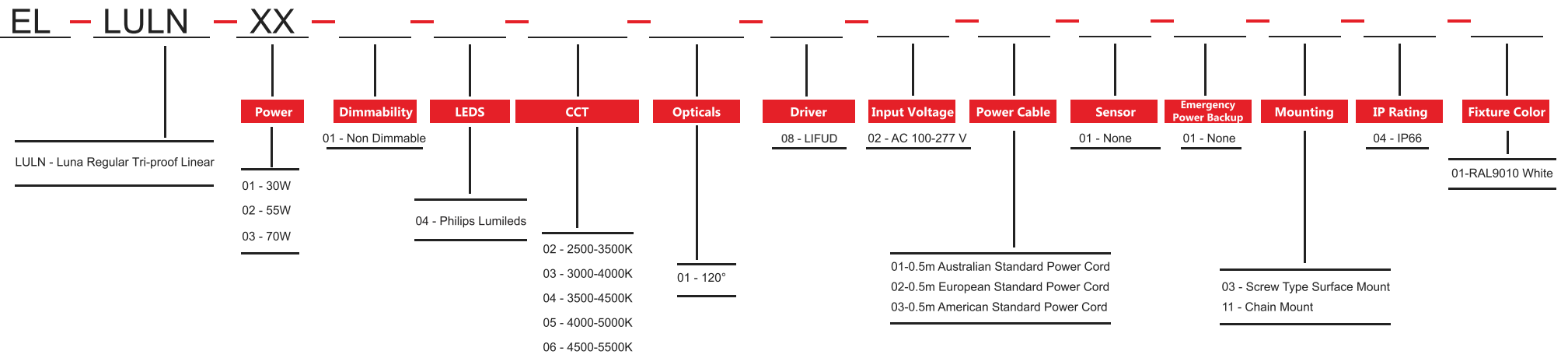


Surface Mounting Installation

1. Measure hole distance according to diagram.
2. Attach hanging clips to surface (hardware not included).
3. Snap light into clips to secure.
4. With supply power off, connect wiring.



ORDERING INFORMATION



E-Lite Semiconductor Co., Ltd.
 Headquarter & Factory
 Website: <http://www.elitesemicon.com>