

A nighttime photograph of a city street scene. In the foreground, a dark, sleek, cylindrical LED street light fixture is shown at an angle, extending from the bottom left towards the center. The background features a wide street with a sidewalk, trees, and a river. The street is illuminated by warm, yellowish streetlights, and the lights are blurred into long, horizontal streaks, suggesting a long-exposure shot. In the distance, a tall, modern building with many lit windows stands against a dark blue night sky. The overall atmosphere is urban and modern.

NEW EDGE™

SERIES

Modular

LED Street Light

E-LITE semicon

STATE OF THE ART

Featuring 160LPW and up to 64,000 lm light output, New Edge could be one of the most powerful street light in the industry. The versatile and sober street lamp employs a state-of-the-art LED engine for performance and efficiency, ensuring maximum energy savings and exceptionally long LED lifespan of more than 150,000 hours.

Engineered to direct light precisely where it's needed most, New Edge streetlight creates a dramatic difference in visibility, safety and operational efficiency, perfect for new construction and renovation projects. Its robust design and manufacturing process also ensure ironclad reliability for years.





FEATURES

System Light Efficacy 160~165 LPW

Ultra-Bright, Up to 49,500 Lm

Flexible, Modular Design

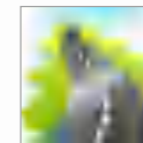
Multiple Choices of Optical Lenses

Easy Installation & Maintenance

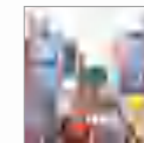
Five Years Warranty

IP66 & IK10 rated

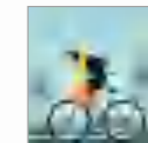
APPLICATIONS



Roads & Motorways



Urban & Residential Streets



Bike & Pedestrian Paths



Squares & Pedestrian Areas



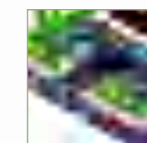
Bridges



Large Areas



Railway Station & Metros



Car Parks



PERFORMANCE

	120W~400W
	160lm/W~165lm/W
	Philips Lumileds
	100-277 VAC (347/480 VAC Optional) Dimming Optional
	0.95 min
	≥70
	4500~5500K (2500~6500K Optional)
	L70>150,000hours
	40×100° / 60×100° / 70×135° / 75×150° / 80×150° 22° / 30° / 45° / 60° / 90° / 110° / 150°
	IP66
	IK10
	3G/5G Rated
	Operating Temperature:-40°C to +60°C (-40°F to 140°F) Storing Temperature:-40°C to +80°C (-40°F to 176°F)



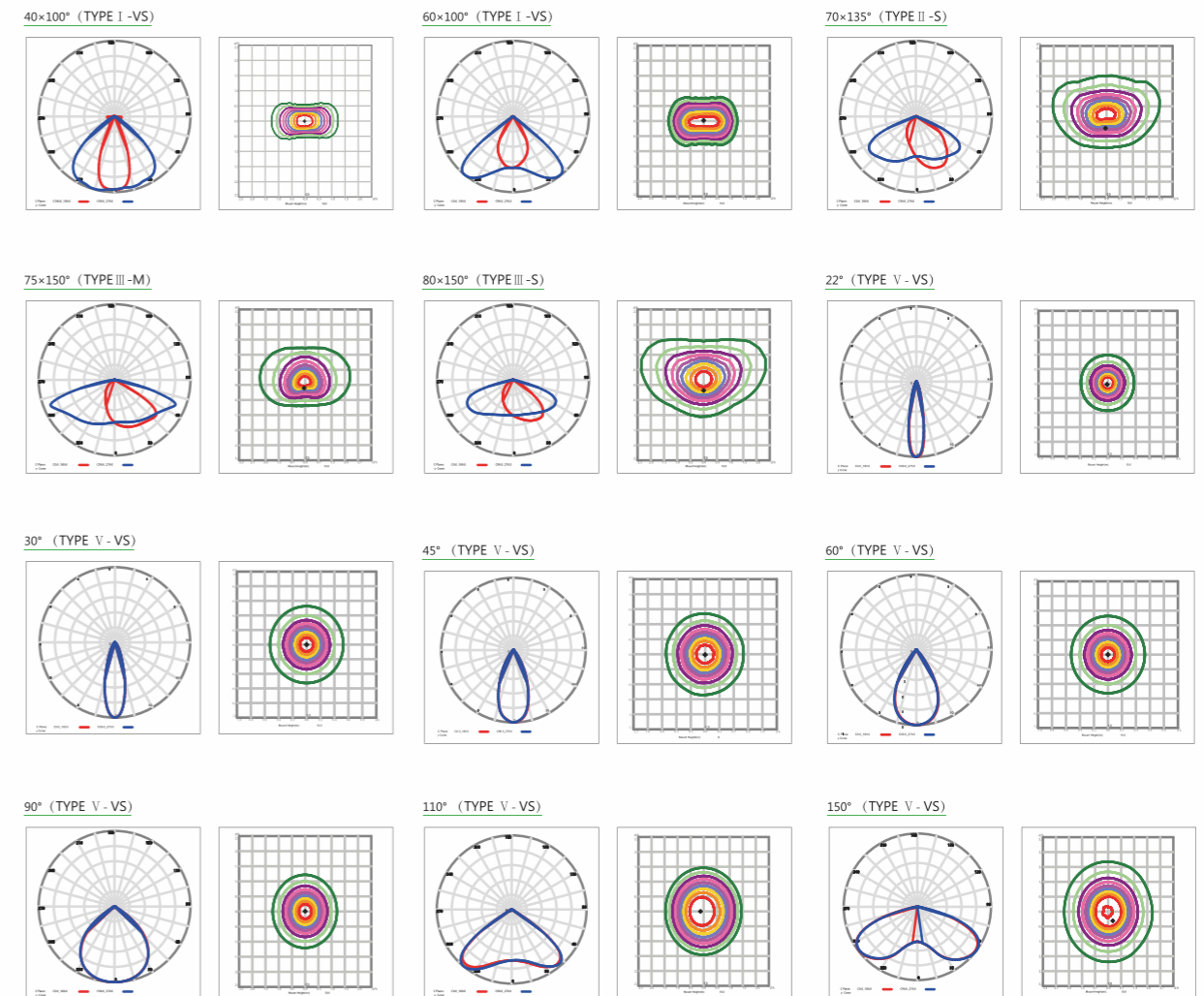
SPECIFICATIONS

Part#	Power	NO.of Modules	Efficacy(IES)	Total Lumen	N.W	Product Dimensions
EL-NED-120(ST)	120w	1	160LPW	19,200lm	5.4.kg/11.9lbs	503×362×84.5mm 19.8×14.3×3.3in
EL-NED-200(ST)	200w	2	165LPW	33,000lm	6.5kg/14.3lbs	597×362×84.5mm 23.5×14.3×3.3in
EL-NED-300(ST)	300w	3	165LPW	49,500lm	7.5kg/16.5lbs	691×362×84.5mm 27.2×14.3×3.3in
EL-NED-400(ST)	400w	4	165LPW	66,000lm	8.6kg/19lbs	785×362×84.5mm 30.9×14.3×3.3in





PHOTOMETRICS

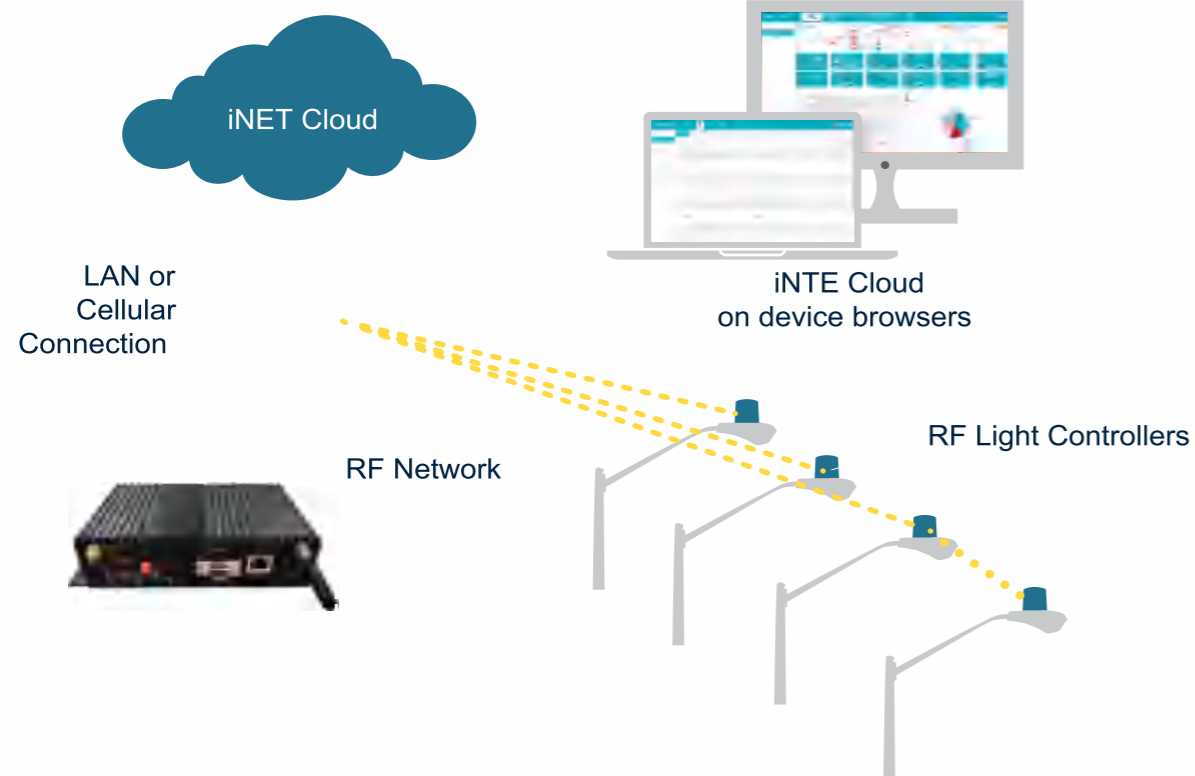


A FUTURE PROOF SOLUTION

Smart City

iNET™ Intelligent Lighting Monitor & Control System is a cloud based wireless smart system designated for lighting management.

With gateways + control node., iNET™ System monitors lights performance status, collects operation data, controls lights on/off or dimming, and sends alarm in case of fault detected.



System & Hardwares



Automatic Light On/Off & Dimming Control

- By time setting
- On/off or dimming with motion sensor detection
- On/off or dimming with photocell detection



Accurate Operation & Fault Monitor

- Real-time monitor on each light working status
- Accurate report on fault detected
- Provide location of fault, no patrol required
- Collect each light operation data, such as voltage, current, power consumption



Extra I/O Ports for Sensor Expandability

- Environment Monitor
- Traffic Monitor
- Security Surveillance
- Seismic Activities Monitor



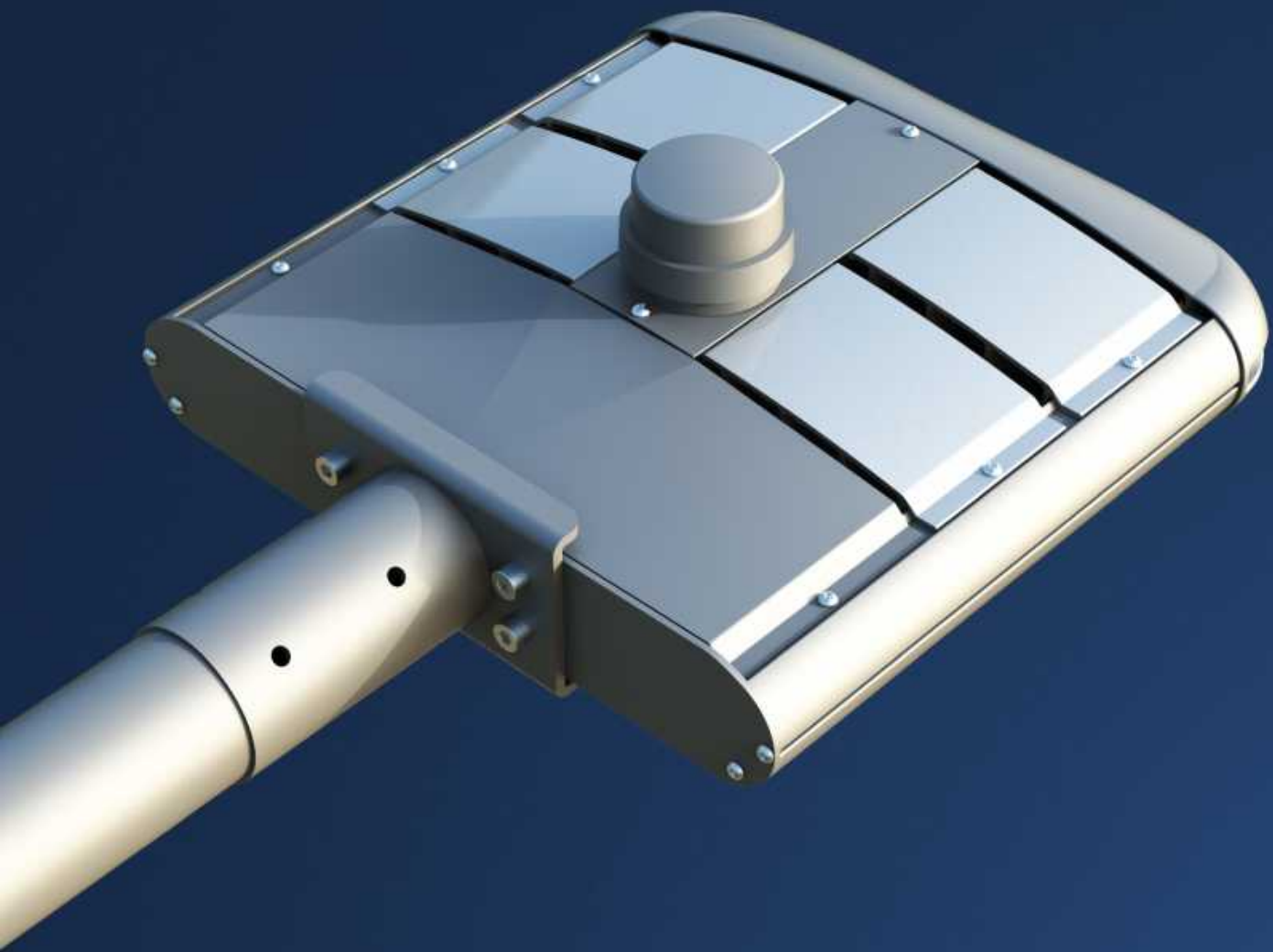
Reliable Mesh Network

- Self proprietary wireless control node
- Reliable node to node, gateway to node communication
- Up to 1000 nodes per network
- Max. network diameter 2000m



Easy-to-use Platform

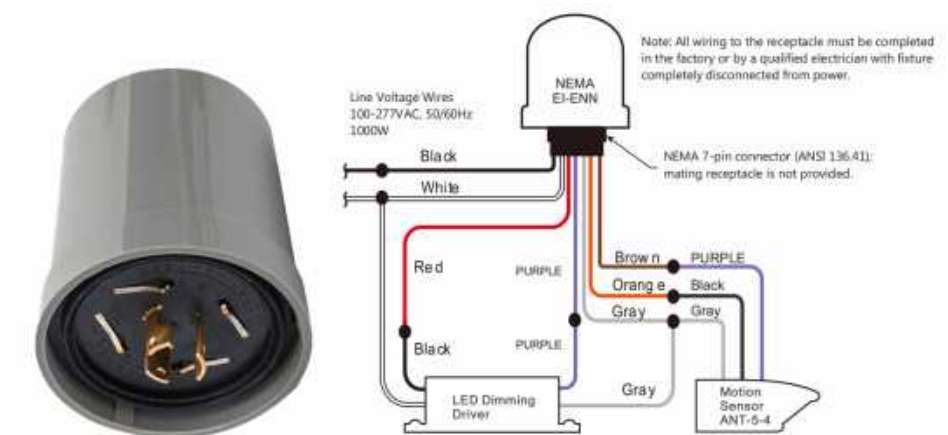
- Easy monitor on each and all lights status
- Support lighting policy remote set-up
- Cloud server accessible from computer or hand held device



ELECTRICS

Future Ready NEMA/Zhaga Connection

Ready NEMA or Zhaga socket to enable further control of streetlight from simple photocell to smart city controller node.



INSTALLATION

For high performance and long term reliability, the light should be installed in free air.

Slip Fitter Mount

1. Unlock the screws, adjust the angle of slip fitter.
2. Feed the power cord through the pole and make wiring.
3. Slide the fixture onto the pole, lock the screws.



Slip Fitter (a)



Slip Fitter (b)



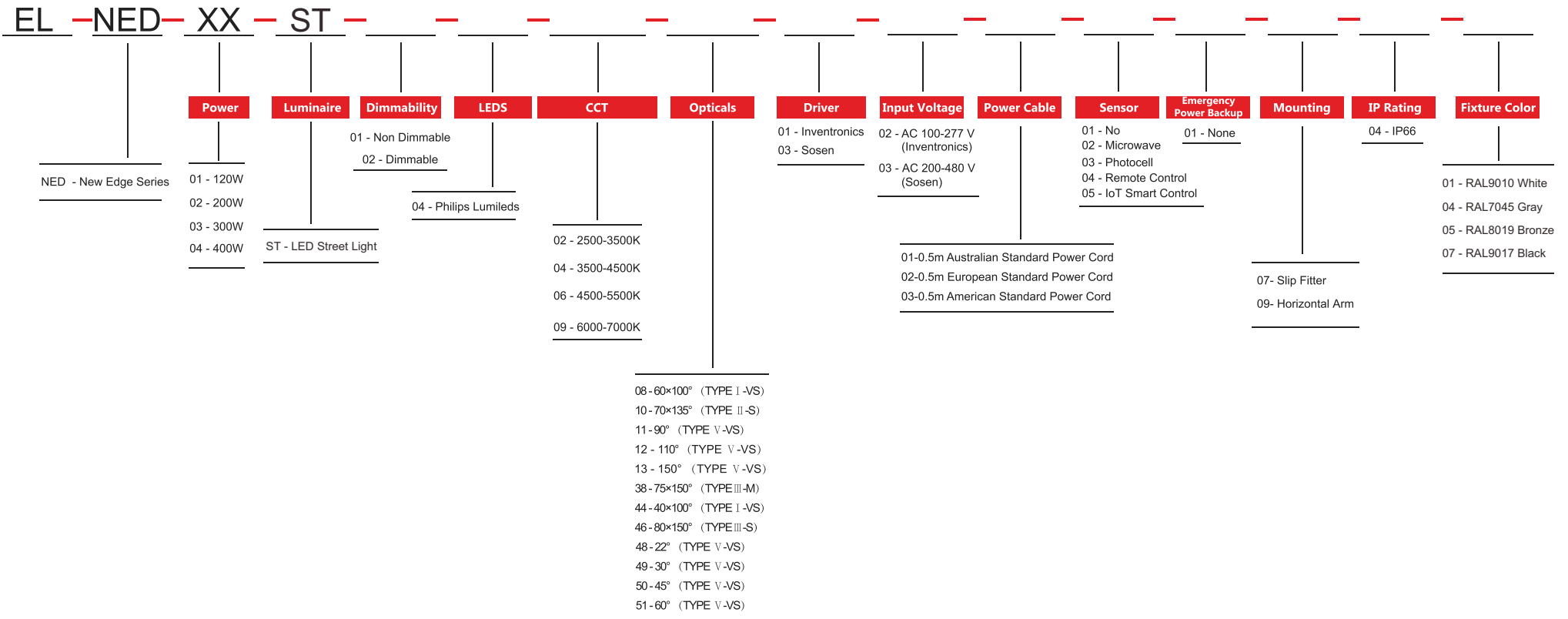
Horizontal Arm (a)



Horizontal Arm (b)



ORDERING INFORMATION



E-Lite Semiconductor Co., Ltd.
Headquarter & Factory
Website: <http://www.elitesemicon.com>