

ORION™

SERIES

LED

Area & Roadway Light

E-LITE semicon



FLEXIBLE DESIGN WITH SUPERIOR PERFORMANCE

Orion is a low-profile, budget-friendly outdoor lighting solution designed to perform in a wide range of municipal and roadway applications. Orion's high-quality offers sustained lighting and aesthetic appeal for the lifetime of an installation.

Orion has been engineered with a superior quality-to-cost ratio. Because of its economical price point, ease of installation in both retrofit or new construction applications, and maintenance savings over the life of an installation, Orion offers the fastest ROI in the market for a wide variety of projects.

A new optical package designed specifically for Orion provides market-leading optic performance in compliance with IES recommendations for parking facilities (IES RP-20-14), and roadway lighting (IES RP-08-14).

Ready NEMA or Zhaga socket to enable further control of streetlight from simple photocell to smart city controller node.

Thanks to an optimised design, Orion is built to withstand hot climates all over the world (Ta 131°F/55°C).



E-LITE semicon / Hello@elitesemicon.com / www.elitesemicon.com





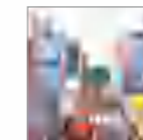
KEY FEATURES

- Cost-effective and efficient lighting solution
- Accelerated return on investment
- Superior efficiency with an average of 130lm/W in neutral white
- Easy and fast installation in retrofit or new construction: thanks to its light weight, only one person is required to install the luminaire
- Operating temperature range -40°F to 131°F, -40°C to 55°C
- Dark sky compliant: ULOR = 0, no up-light
- 4 sizes for aesthetic consistency in all applications
- Standard mast-arm mounting: 1 1/4" to 2" pipes (42-60mm) with inclination from -10° to +5° in steps of 2.5°
- 3G rated
- Surge protection 20kV / 10kA
- 7-pin receptacle included (shorting cap optional)

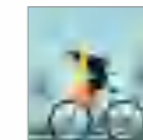
APPLICATIONS



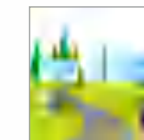
Roads & Motorways



Urban & Residential Streets



Bike & Pedestrian Paths



Squares & Pedestrian Areas



Bridges



Large Areas



Railway Station & Metros

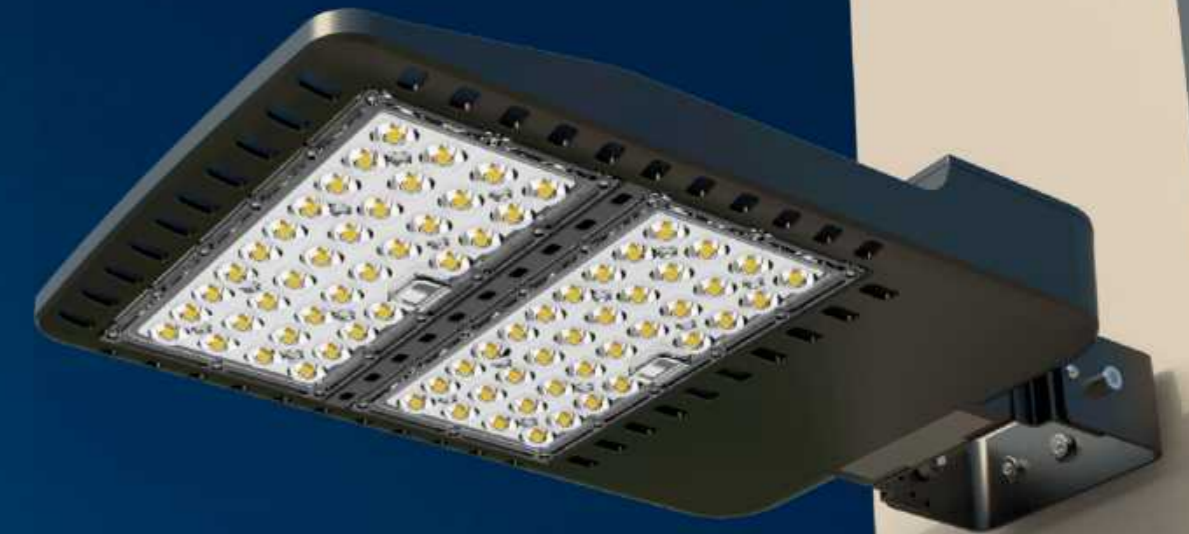


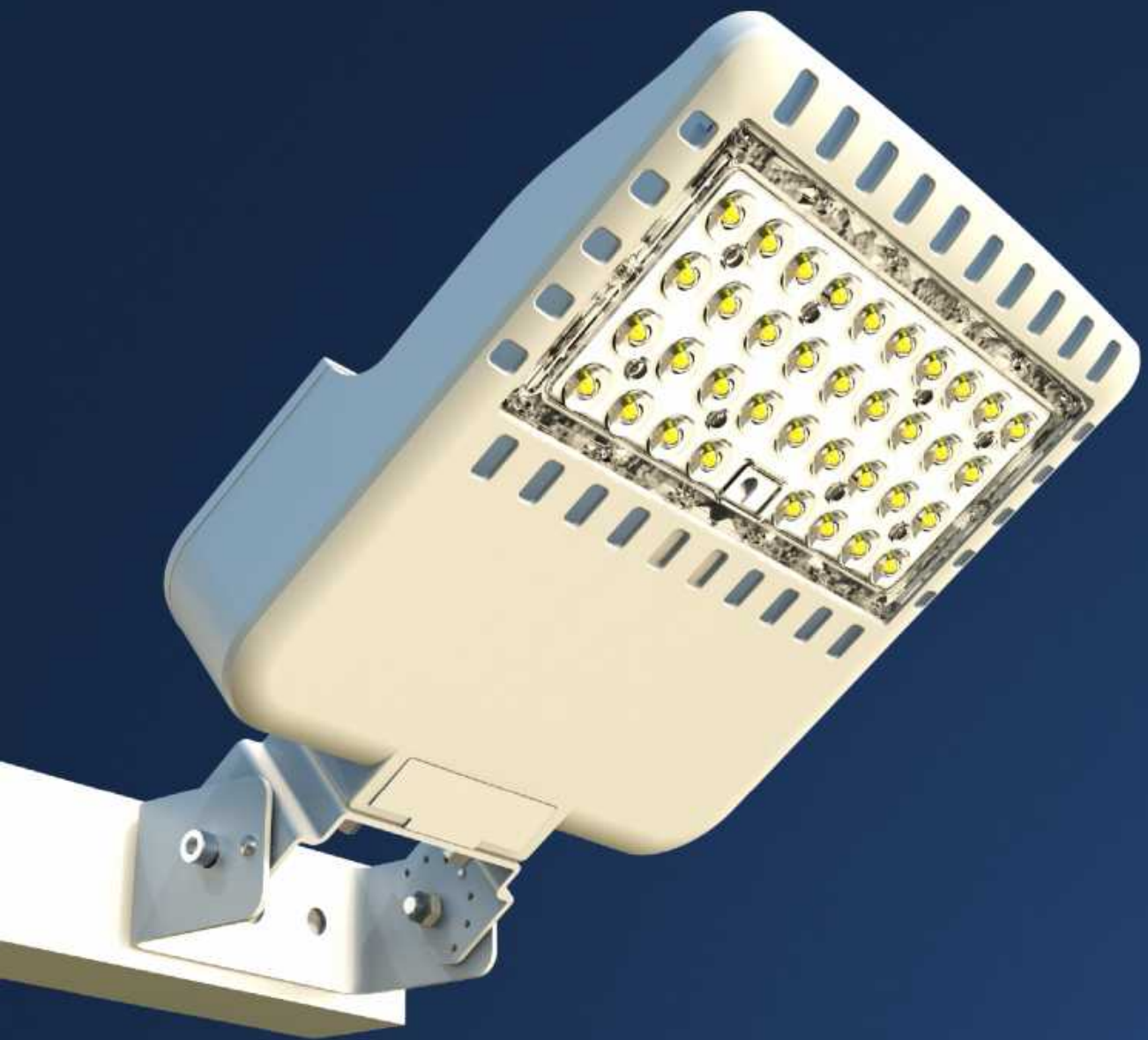
Car Parks

UNDER DECK WALL MOUNT

Orion Under Deck Light, designed specifically for lighting large outdoor areas such as underneath overpasses, tunnels and bridges. This under deck light delivers a wide beam spread and high levels of light for effective broad area illumination.

LED underdeck luminaires shall meet the applicable requirements of the FDOT. LED underdeck luminaires are suitable for replacing 150-watt, 250, or 400-watt high-pressure sodium (HPS) underdeck and hanging lights.





PERFORMANCE

	50W~300W
	130lm/W~150lm/W
	Philips Lumileds
	AC 100~277V / AC 200~480 V
	0.95 min
	≥70
	4500~5500K(2500~5500K optional)
	L70>100,000hours
	90x150° / 130°
	IP66
	IK10
	3G Vibration
	Operating Temperature:-30°C to +50°C (-22°F to 122°F) Storing Temperature:-40°C to +80°C (-40°F to 176°F)



SPECIFICATIONS

Part#	Power	NO. of Modules	Efficacy(IES)	Total Lumen	N.W	Product Dimensions
EO-ARORN-50	50W	1	150lm/W	7,500lm	4.5kg/9.9lbs	485x300x75mm 19.1x11.8x2.9in
EO-ARORN-100	100W		145lm/W	14,500lm	4.5kg/9.9lbs	
EO-ARORN-150	150W		130lm/W	19,500lm	4.5kg/9.9lbs	
EO-ARORN-200	200W	2	145lm/W	29,000lm	5.9kg/13.0lbs	620x300x75mm 24.4x11.8x2.9in
EO-ARORN-240	240W	3	150lm/W	36,000lm	8.4kg/18.5lbs	790x300x75mm 31.1x11.8x2.9in
EO-ARORN-300	300W		145lm/W	43,500lm	8.4kg/18.5lbs	

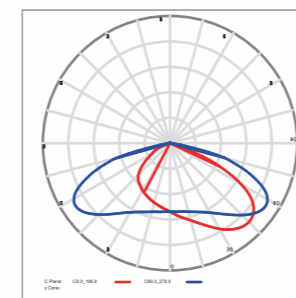




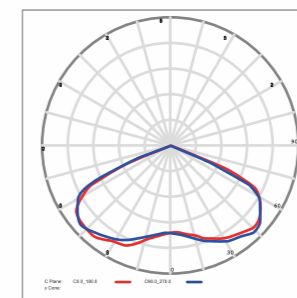
PHOTOMETRICS

Lenses in mouldable and optical-grade silicon offer a superior transparency and a great photo thermal stability to withstand high driving currents and deliver maximized lumen output over time. Silicon optics were first developed for headlights in the automotive industry, as they provide proven superior performance, resistance to damage, high IP protection, and high UV protection.

90x150 DEGREE (Type III-S)



130 DEGREE (Type V-S)

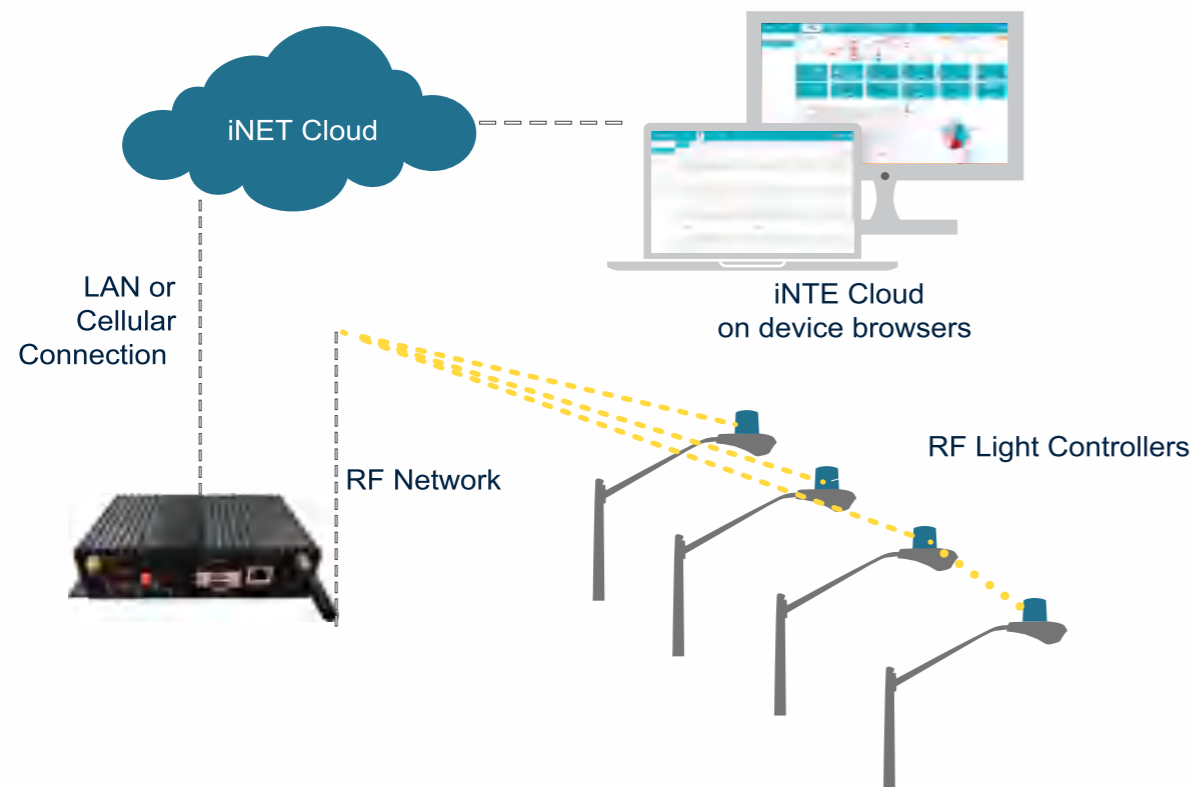


A FUTURE PROOF SOLUTION

Smart City

iNET™ Intelligent Lighting Monitor & Control System is a cloud based wireless smart system designated for lighting management.

With gateways + control node., iNET™ System monitors lights performance status, collects operation data, controls lights on/off or dimming, and sends alarm in case of fault detected.



Automatic Light On/Off & Dimming Control

- By time setting
- On/off or dimming with motion sensor detection
- On/off or dimming with photocell detection



Accurate Operation & Fault Monitor

- Real-time monitor on each light working status
- Accurate report on fault detected
- Provide location of fault, no patrol required
- Collect each light operation data, such as voltage, current, power consumption



Extra I/O Ports for Sensor Expandability

- Environment Monitor
- Traffic Monitor
- Security Surveillance
- Seismic Activities Monitor



Reliable Mesh Network

- Self proprietary wireless control node
- Reliable node to node, gateway to node communication
- Up to 1000 nodes per network
- Max. network diameter 2000m



Easy-to-use Platform

- Easy monitor on each and all lights status
- Support lighting policy remote set-up
- Cloud server accessible from computer or hand held device



INSTALLATION

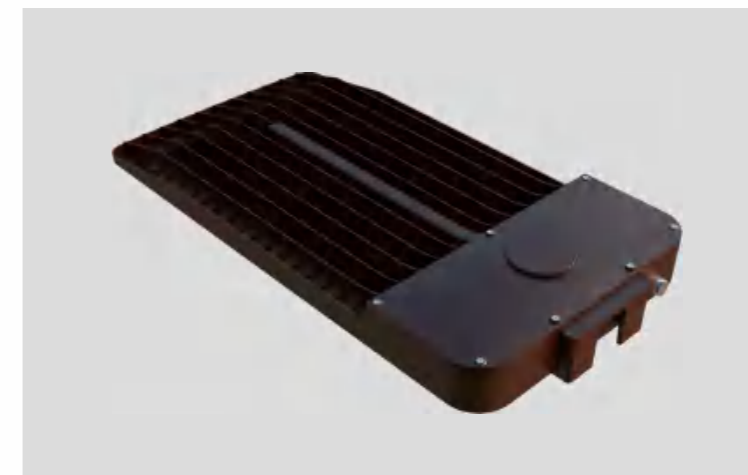
For high performance and long term reliability, the light should be installed in free air.

Slip Fitter Mount

1. Unlock the screws, adjust the angle of slip fitter.
2. Feed the power cord through the pole and make wiring.
3. Slide the fixture onto the pole, lock the screws.

Side Arm Mount

1. Open extended arm lower cap.
2. Feed power cable through extended arm, Wiring.
3. Put the two bolts into the extended arm, and tight the hex nuts from inside of the extended arm.
4. Install arm upper cap.



Trunnion (Under Deck Wall Mount)



Side Arm (1) + Square Pole



Slip Fitter



Side Arm (2) + Square Pole



Side Arm (1) + Round Pole

ORDERING INFORMATION

