

A nighttime photograph of a city skyline, likely Dubai, featuring a complex multi-level highway interchange in the foreground. The roads are illuminated with warm yellow light, and the background is filled with numerous skyscrapers, some of which are lit up with blue and white lights. The sky is dark blue.

E-LITE

PHANTOM SERIES
LED Street Light



A TYPICAL COBRA-HEAD

Four housing sizes and a range of beam optics to fully cater to different road configurations and conditions.
One-piece die-cast aluminum housing with integral mounting for strength and durability.
Automatic disconnect design ensures easy and safe access, with a great choice of controls to minimize power consumption and maximize the benefits of smart lighting.

FEATURES

High quality Sosen driver + Lumileds 3030 LED chips
Beam angle of 70x140°, 70x150°, 90x145°
Multi-voltage choices are available in 100-277VAC and 277-480V AC
Easy Installation, Direct Slide-in Mount.
CE, RoHS, ETL and DLC approval
IP66, water and dust proof.
10KV surge protection and 3G Vibration.
5-10 Years Warranty.

APPLICATIONS

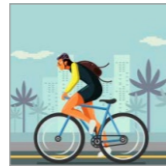
IP66 rated waterproof, state-of-the-art, aesthetically pleasant compact design street lights with no exposed electronics or wiring are safe to use in any harsh extreme outdoor conditions, such as motorways, major roadways, crossings, parking lots, walkways and general large areas.



Roads & Motorways



Urban & Residential Streets



Bike & Pedestrian Paths



Squares & Pedestrian Areas



Bridges



Large Areas



Railway Station & Metros




Car Parks





IP66 | Water and Dust Proof.

PERFORMANCE

	10W~240W
	135lm/W~145lm/W
	Philips Lumileds / Cree
	AC 100~277V / AC 200~480 V
	0.95 min
	Sosen / Inventronics
	≥ 70
	4500~5500K(2500~5500K optional)
	L70>100,000hours
	Type II / Type III
	IP66 / IP67
	IK09
	3G Vibration
	Operating Temperature:-45°C to +45°C (-49°F to 113°F) Storing Temperature:-45°C to +80°C (-49°F to 176°F)

SPECIFICATIONS

	Power	LEDs Qty	Lens Qty	Output Current	Efficacy (IES)	Total Lumens	N.W	Product Dimension
EO-STPT-30	10W	24	3	73mA	145lm/w	1450lm	4.0kg/8.8lbs	520×212×90mm 20.5x8.3x3.5in
	15W	24	3	93mA	139lm/w	2085lm		
	20W	30	3	100mA	138lm/w	2760lm		
	25W	36	3	106mA	139lm/w	3614lm		
	30W	36	3	125mA	135lm/w	4050lm		
EO-STPT-60	35W	48	6	106mA	135lm/w	4725lm	5.3kg/11.7lbs	616×259×186mm 24.3x10.2x7.3in
	40W	60	6	100mA	139lm/w	5560lm		
	45W	60	6	111mA	136lm/w	6120lm		
	50W	72	6	106mA	140lm/w	7000lm	5.4kg/11.9lbs	
	60W	72	6	125mA	135lm/w	8100lm		
EO-STPT-90	65W	80	8	120mA	137lm/w	8905lm	5.4kg/11.9lbs	616×259×186mm 24.3x10.2x7.3in
	70W	80	8	130mA	135lm/w	9450lm		
	75W	96	8	120mA	139lm/w	10425lm		
	80W	96	8	126mA	137lm/w	10960lm	5.5kg/12.1lbs	
	90W	96	8	143mA	135lm/w	12150lm		
EO-STPT-120	95W	120	12	123mA	139lm/w	13205lm	7.4kg/16.3lbs	677×305×187mm 26.7x12x7.4in
	100W	120	12	130mA	137lm/w	13700lm	7.5kg/16.5lbs	
	110W	144	12	120mA	139lm/w	15290lm		
	120W	144	12	130mA	135lm/w	16200lm		
EO-STPT-150	125W	150	15	130mA	135lm/w	16875lm	7.5kg/16.5lbs	677×305×187mm 26.7x12x7.4in
	150W	180	15	130mA	135lm/w	20250lm		
EO-STPT-200	175W	200	20	135mA	135lm/w	23625lm	11.5kg/25.4lbs	850×366×198mm 33.5x14.4x7.8in
	200W	240	20	130mA	135lm/w	27000lm	11.7kg/25.8lbs	
	220W	288	24	120mA	139lm/w	30580lm		
	240W	288	24	130mA	135lm/w	32400lm		



Street Side Shields(Front)



Order code	Description	Shield Depth	
PH-01-XX	EO-STPT-30	1.5' / 3.8cm	3' / 7.6cm
PH-02-XX	EO-STPT-60 EO-STPT-90	1.5' / 3.8cm	3' / 7.6cm
PH-03-XX	EO-STPT-120 EO-STPT-150	2' / 5.1cm	4' / 10.2cm
PH-04-XX	EO-STPT-200	2' / 5.1cm	4' / 10.2cm

Street Side Shields(LQR)

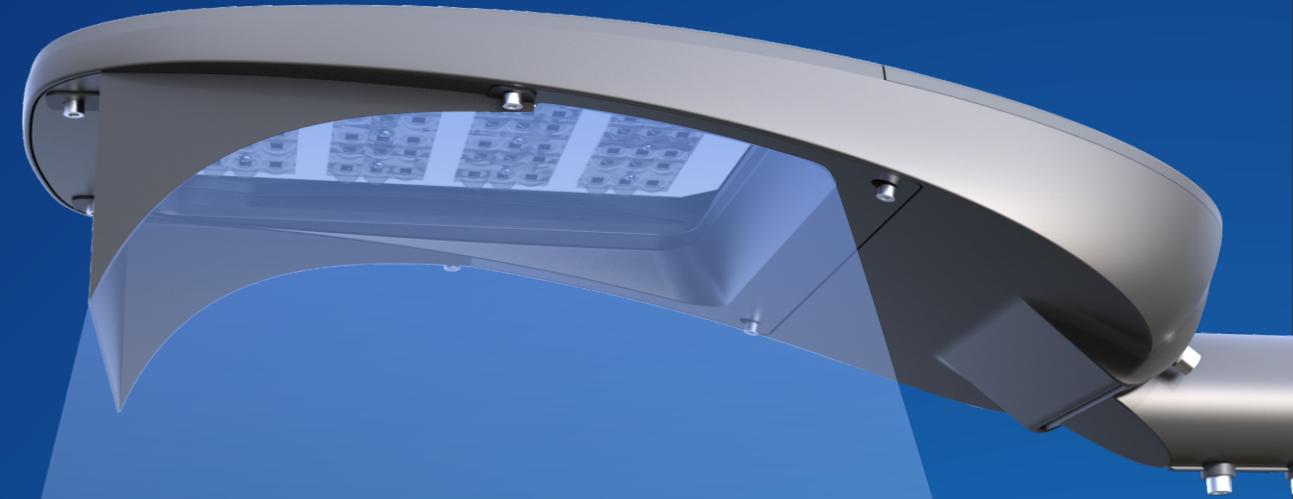


Order code	Description	Shield Dep	
PH-01-XX	EO-STPT-30	1.5' / 3.8cm	3' / 7.6cm
PH-02-XX	EO-STPT-60 EO-STPT-90	1.5' / 3.8cm	3' / 7.6cm
PH-03-XX	EO-STPT-120 EO-STPT-150	2' / 5.1cm	4' / 10.2cm
PH-04-XX	EO-STPT-200	2' / 5.1cm	4' / 10.2cm

House Side Shields(Back)



Order code	Description	Shield Depth
PH-01-XX	EO-STPT-30	3' / 7.6cm
PH-02-XX	EO-STPT-60 EO-STPT-90	3' / 7.6cm
PH-03-XX	EO-STPT-120 EO-STPT-150	4' / 10.2cm
PH-04-XX	EO-STPT-200	5' / 12.7cm



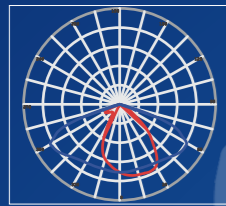
LIGHT SPILL CONTROL

Any light that falls beyond the area that is being illuminated that is not intentional or required is considered spill light. Besides the special designed optics, kinds of different shields used to control the light distribution well.

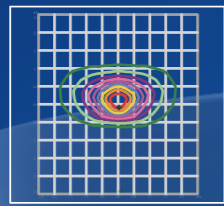
Limit light pollution and no light for dark sky.

PHOTOMETRICS

70 x 140 (TYPE II -S)

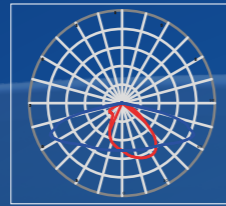


0.0~180.0
90.0~270.0

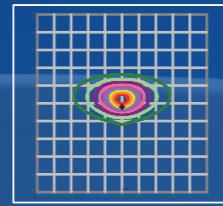


Mount Height(m): 6

70 x 150 (TYPE II -M)



0.0~180.0
90.0~270.0

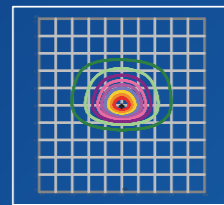


Mount Height(m): 8

95 x 150 (TYPE III -S)



0.0~180.0
90.0~270.0



Mount Height(m): 6

INSTALLATION

1. Unlock the screws, adjust the angle of slip fitter.
2. Feed the power cord through the pole and make wiring.
3. Insert the fixture into the pole, lock the screws.



Unlock Screw



Driver Box

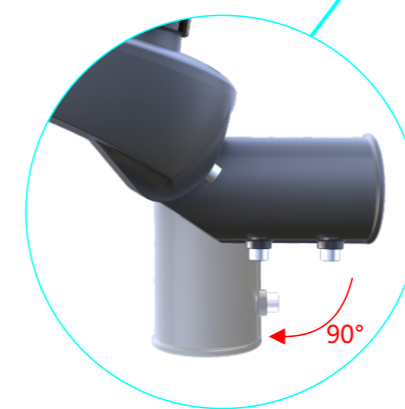
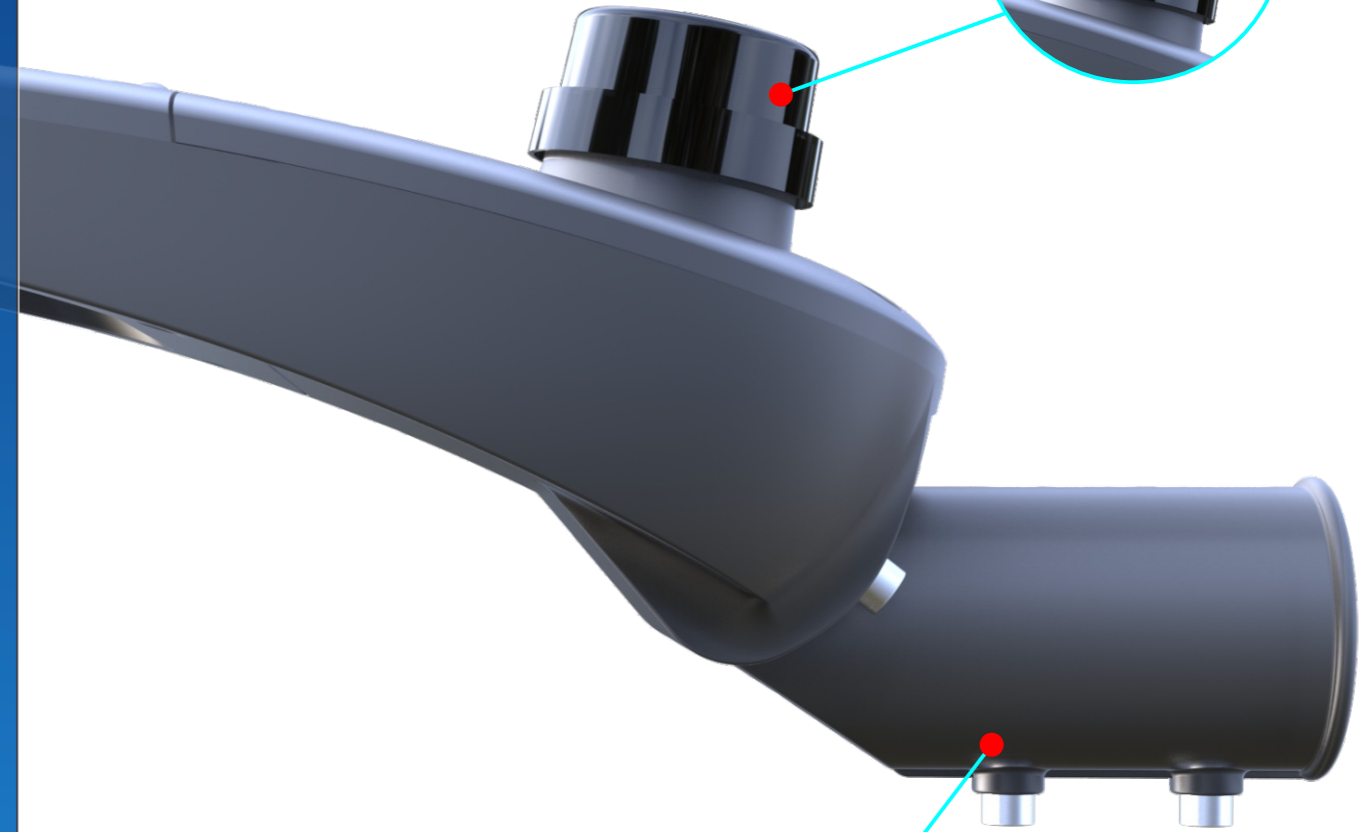
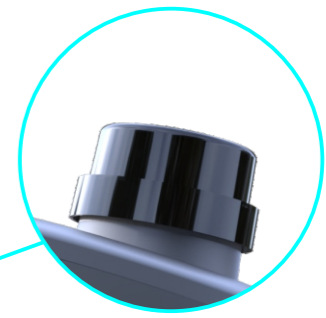


NEMA Socket



Wiring

NEMA/Zhaga Connection



Slip Fitter

ELECTRICS

Field Adjustable Output Module

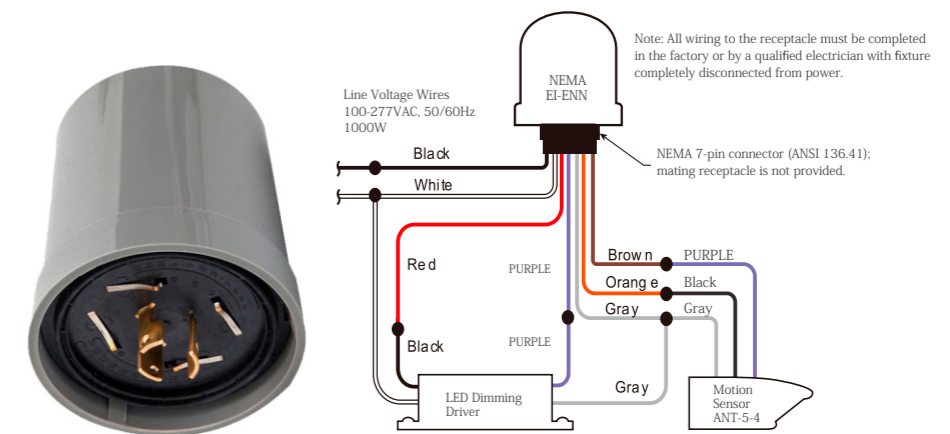
The Field Adjustable Output Module is a factory-installed voltage regulating device that is connected to the gray (-) and violet (+) 0-10V dimming leads of the LED driver.

Manually dialing the switch allows the fixture to be dimmed in the field.



Future Ready NEMA/Zhaga Connection

Ready NEMA or Zhaga socket to enable further control of streetlight from simple photocell to smart city controller node.

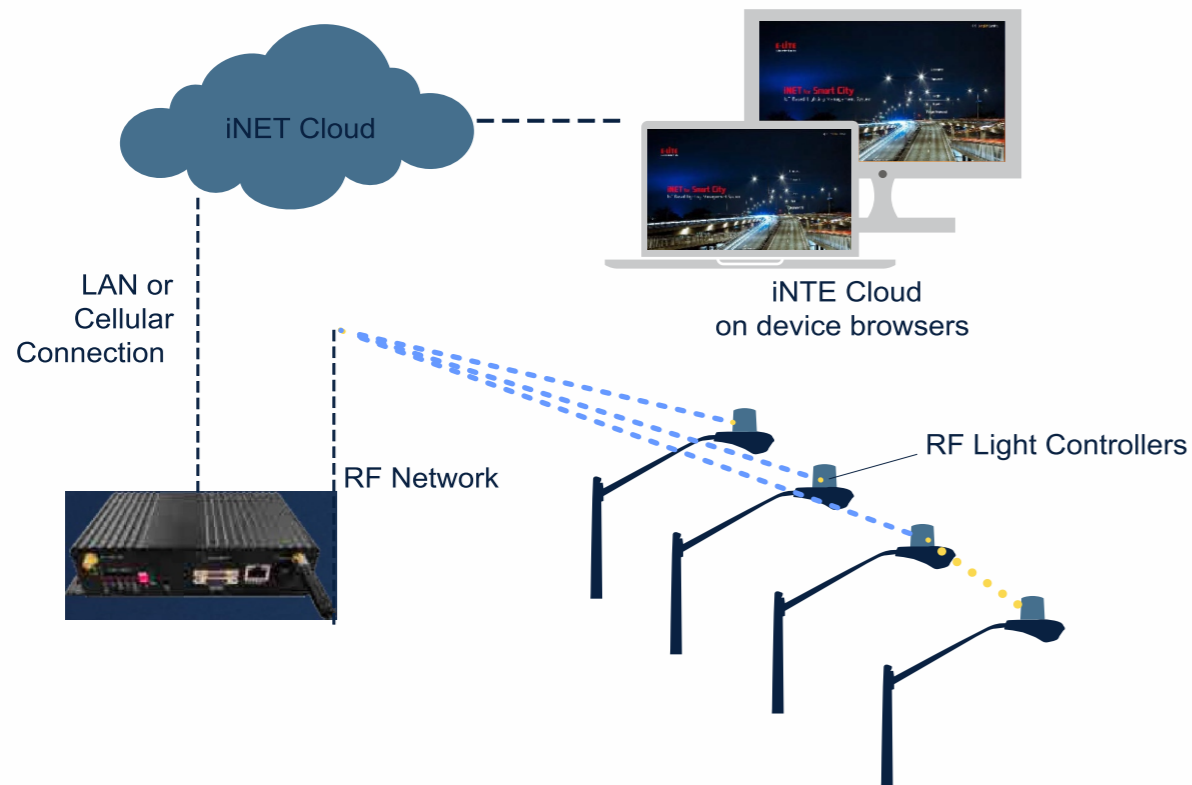


A FUTURE PROOF SOLUTION

Smart City

iNET™ Intelligent Lighting Monitor & Control System is a cloud based wireless smart system designated for lighting management.

With gateways + control node., iNET™ System monitors lights performance status, collects operation data, controls lights on/off or dimming, and sends alarm in case of fault detected.



System & Hardwares



Automatic Light On/Off & Dimming Control

- By time setting
- On/off or dimming with motion sensor detection
- On/off or dimming with photocell detection



Accurate Operation & Fault Monitor

- Real-time monitor on each light working status
- Accurate report on fault detected
- Provide location of fault, no patrol required
- Collect each light operation data, such as voltage, current, power consumption



Extra I/O Ports for Sensor Expandability

- Environment Monitor
- Traffic Monitor
- Security Surveillance
- Seismic Activities Monitor



Reliable Mesh Network

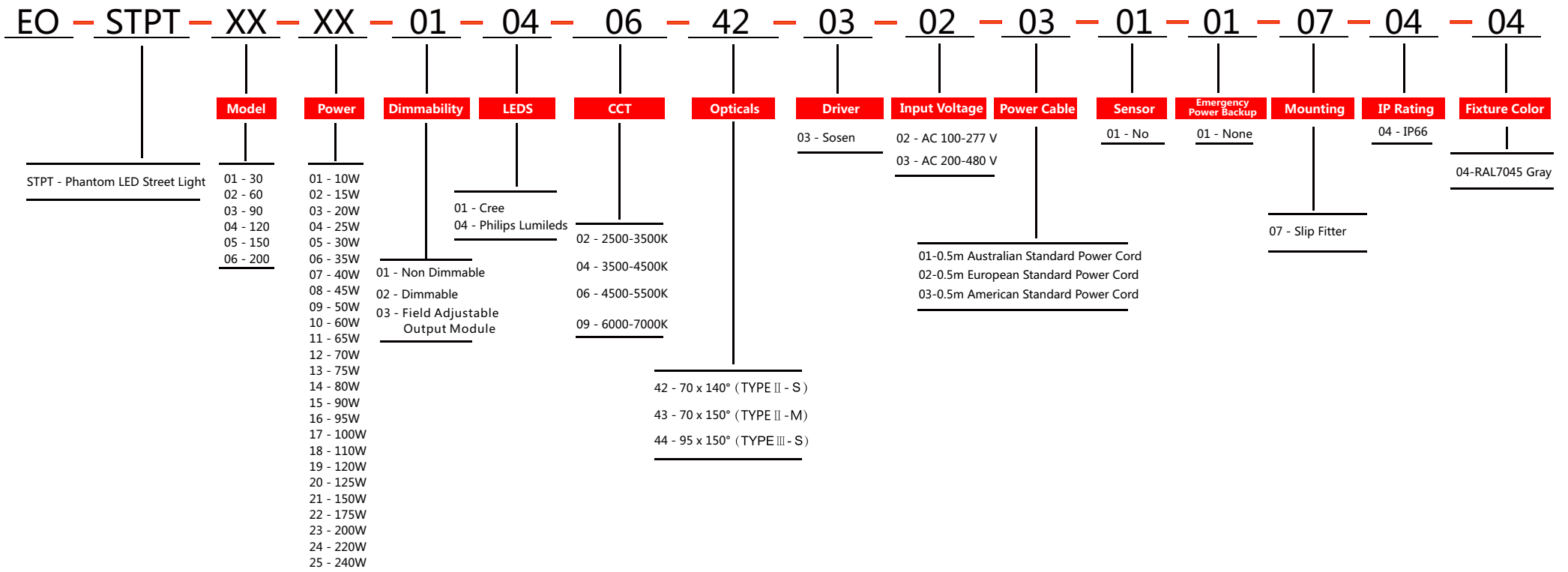
- Self proprietary wireless control node
- Reliable node to node, gateway to node communication
- Up to 1000 nodes per network
- Max. network diameter 2000m



Easy-to-use Platform

- Easy monitor on each and all lights status
- Support lighting policy remote set-up
- Cloud server accessible from computer or hand held device

ORDERING INFORMATION



E-Lite Semiconductor Co., Ltd.
 Headquarter & Factory
 Website: <http://www.elitesemicon.com>