

E-LITE semicon

STELLA

SERIES

**LED Canopy
Light**

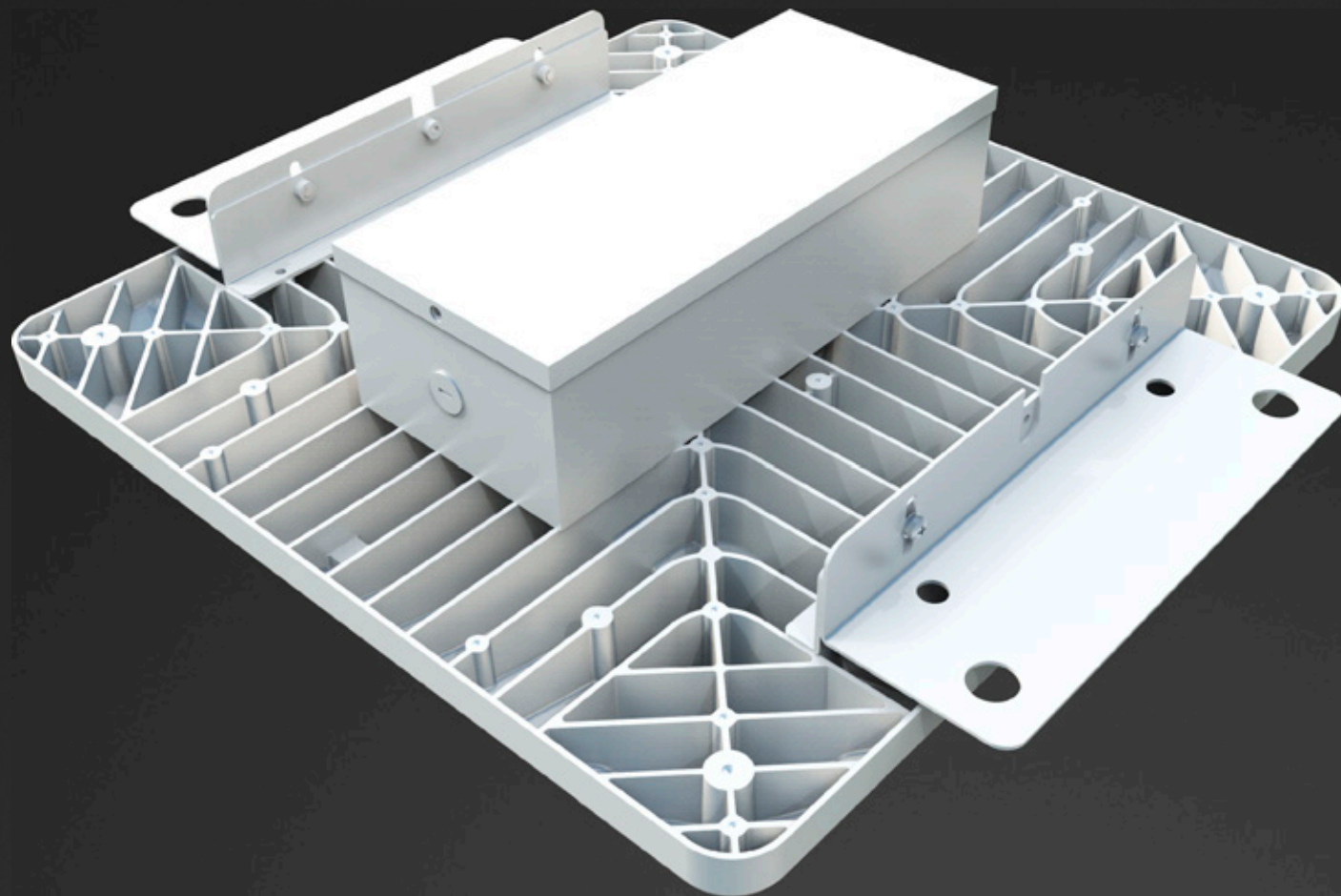
LIGHTING IN A BETTER WAY

The modern and compact aesthetic Stella is designed for under-canopy lighting in gas stations, drive thrus, covered walkways, and other commercial areas. Creating a clean and crisp environment to attract more customers with bright, comfort and safety feeling, the fixture is ideal to replace 165W to 400W HID, such as Scottsdales and many other similar fixtures. It offers more than 70% of energy y savings, whilst delivering long lifetime, in often hard to reach maintenance areas.

Stella comes with choices of mounting accessories for recessed-in, surface mount, or conduit hanging. IP66 rated to keep water and insects out.

E-LITE semicon / [Hello@elitesemicon.com](mailto>Hello@elitesemicon.com) / www.elitesemicon.com





FEATURES

System light efficacy 150 LPW

Slim design with driver inside the housing.

Choices of mounting accessories for recessed-in, surface mount, or conduit hanging.

Easy Installation & Maintenance.

Suitable for operation in ambient temperature of $-40^{\circ}\text{C} \sim +55^{\circ}\text{C}$.

High protection rating: IP66 and IK10.

CE, CB & RoHS Certified.

5 years warranty.

E-LITE semicon / Hello@elitesemicon.com / www.elitesemicon.com

PERFORMANCE

LEDs	Philips Lumileds
CCT	4500~5500K (2500~6500K Optional)
CRI	≥70
L70	L70>100,000 Hours
Voltage	100-277 VAC
PF	0.95 min
IP	IP66
IK	IK10
Coating	Corrosive resistant polyester powder coat finish
Temp	Operating Temperature:-30°C to +55°C (-22°F to 131°F) Storing Temperature:-40°C to +80°C (-40°F to 176°F)
Humidity	15% to 95% RH





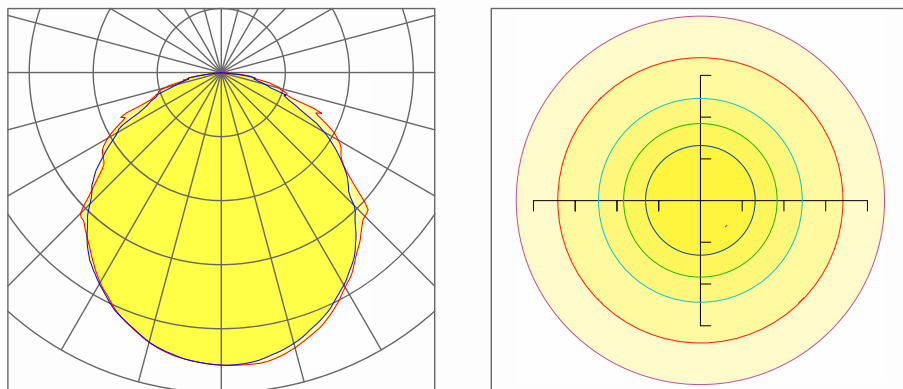
SPECIFICATIONS

Part#	Power	Efficacy(IES)	Total Lumen	N.W	Product Dimensions
EO-CPSTL-80	80W	150lm/W	12,000lm	2.1kg/4.6lbs	280×280×96.5mm 11×11×3.8in
EO-CPSTL-100	100W	150lm/W	15,000lm	2.1kg/4.6lbs	280×280×96.5mm 11×11×3.8in
EO-CPSTL-120	120W	150lm/W	18,000lm	3.1kg/6.8lbs	382×382×117.5mm 15×15×4.6in
EO-CPSTL-150	150W	150lm/W	22,500lm	3.1kg/6.8lbs	382×382×117.5mm 15×15×4.6in



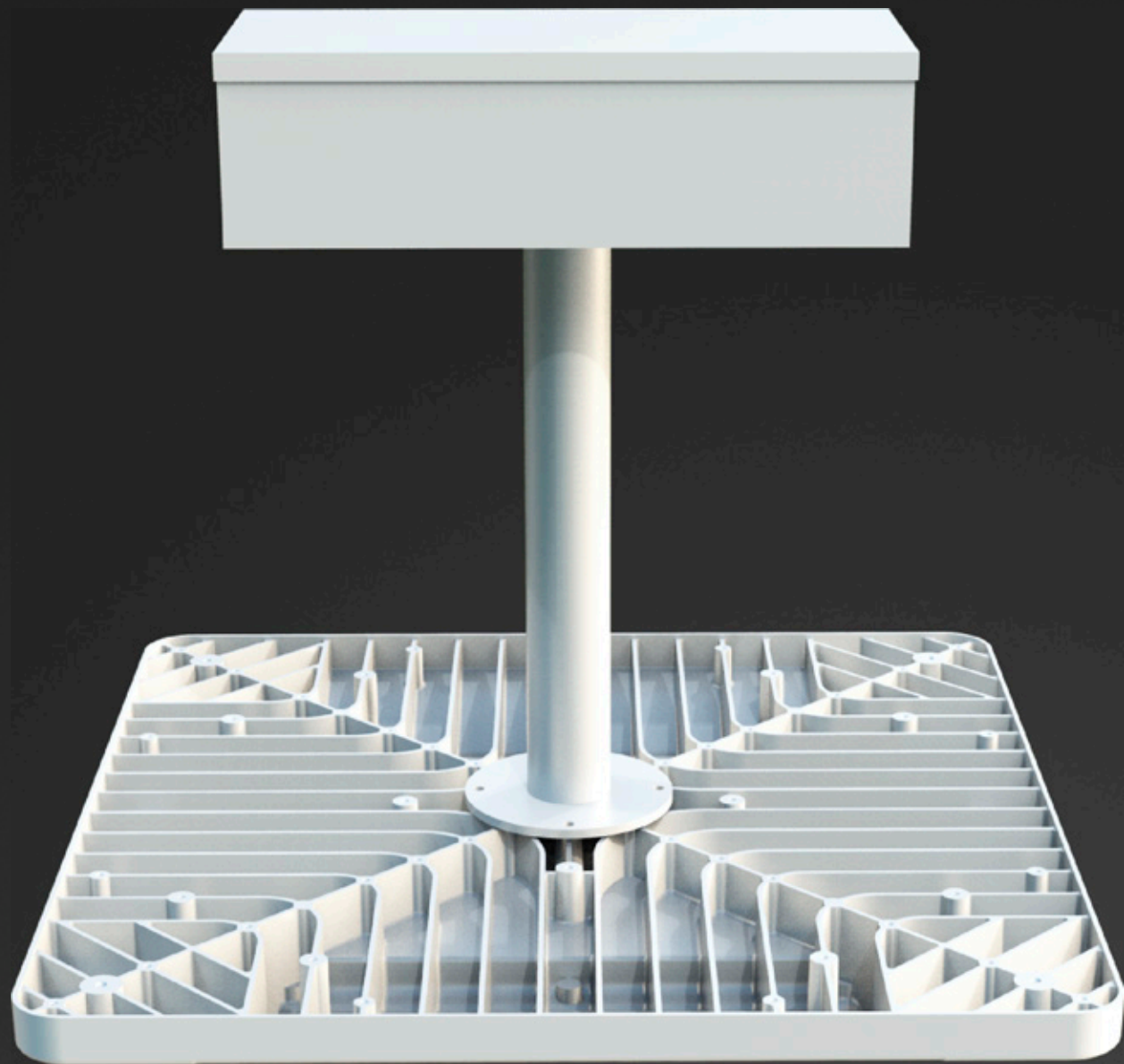
PHOTOMETRICS

120 DEGREE



— 0.0~180.0
— 90.0~270.0

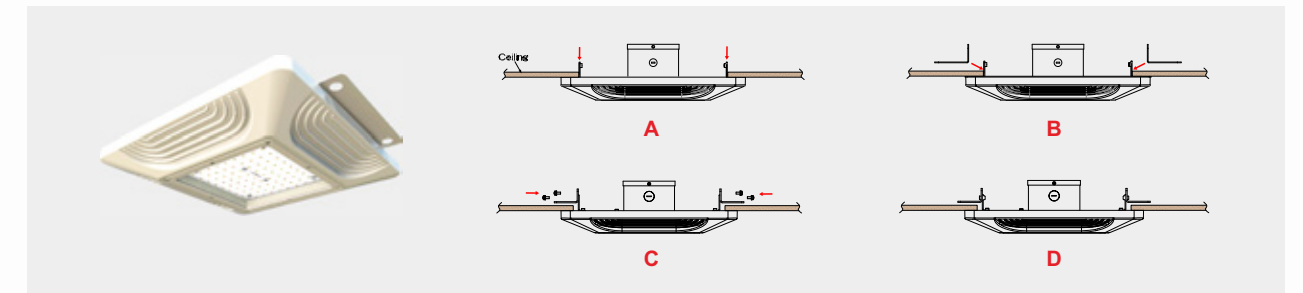




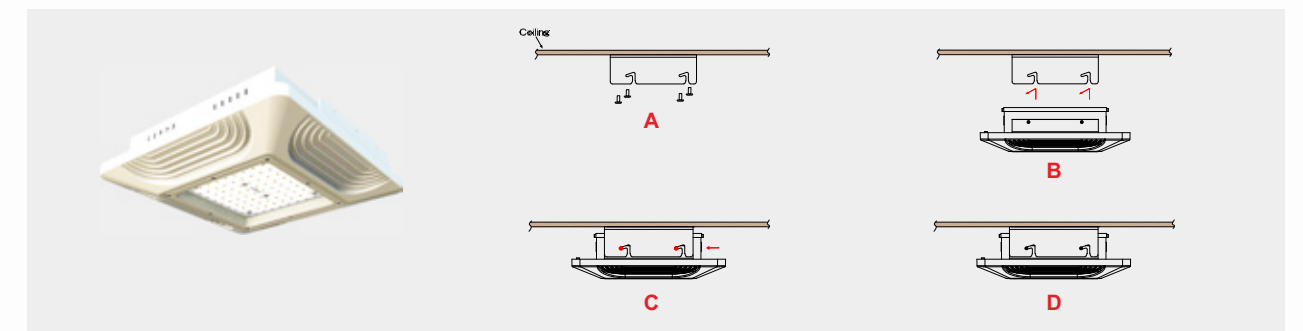
INSTALLATION

For high performance and long term reliability, the light should be installed in free air.

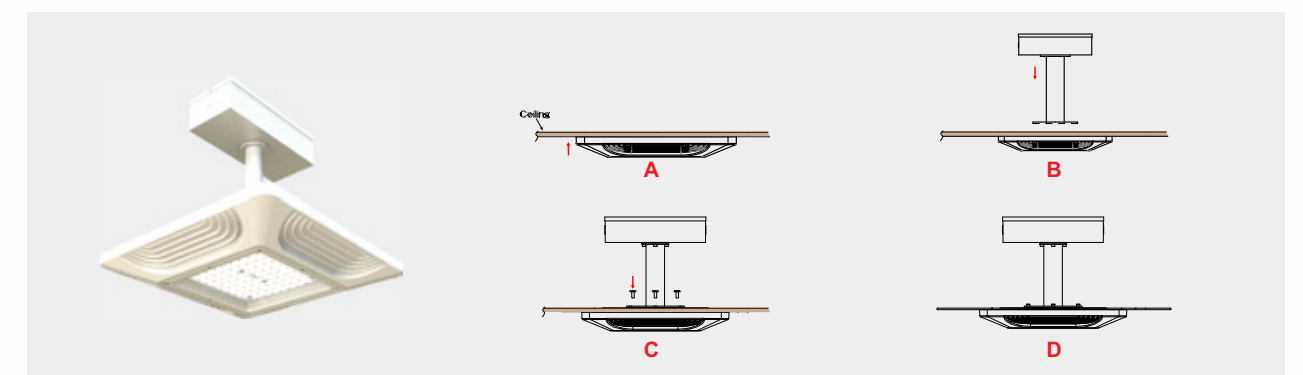
Recessed-in Installation



Surface Mount with Bracket

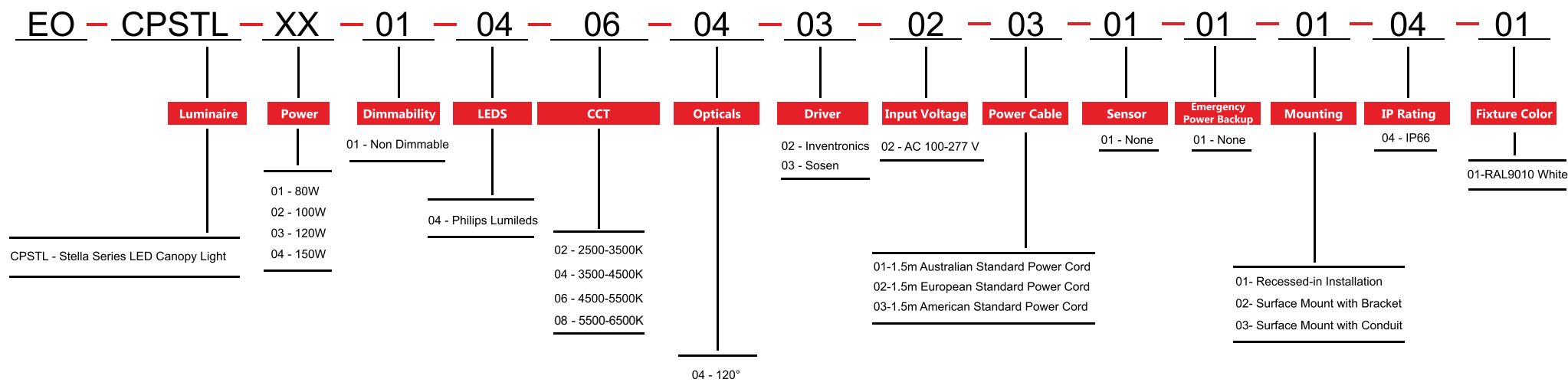


Surface Mount with Conduit



ORDERING INFORMATION

E-LITE semicon



E-Lite Semiconductor Co., Ltd.
Headquarter & Factory
Website: <http://www.elitesemicon.com>