

**E-LITE** semicon

# **XCEED**

## **SERIES**

# **Sports Light**

[Hello@elitesemicon.com](mailto:Hello@elitesemicon.com) // [www.elitesemicon.com](http://www.elitesemicon.com)



# JUST RIGHT FOR TV

Xceed is a just-right-for-TV floodlight for sports venues that host televised events and many other areas. For sports venues that host televised events, lighting spec for HD, 4K TV are key. Xceed illuminates the athletes and the on-field action so that TV cameras will capture bright and colorful images, providing an optimal viewing experience.

**E-LITE** semicon / [Hello@elitesemicon.com](mailto:Hello@elitesemicon.com) / [www.elitesemicon.com](http://www.elitesemicon.com)





# FLEXIBILITY FOR ALL SPORTS NEED

From recreational level to club level and to competition level,  
the higher level of competition, the greater the requirements.  
Designed for flexibility, Xceed covers a broad range of sports lighting needs.

Working at 150 Lm/W and light output up to 120,000lm,  
The Xceed floodlight enables substantial savings from CO<sub>2</sub> emissions to energy  
consumption of more than 50% as compared to conventional lighting solutions.



Recreational  
sports



Multi-sports  
halls



Areas for  
controlled  
spill light



Apron  
spaces



Transportation &  
industrial areas

**E-LITE** semicon / [Hello@elitesemicon.com](mailto:Hello@elitesemicon.com) / [www.elitesemicon.com](http://www.elitesemicon.com)



# OPTIMAL LIGHTING PERFORMANCE

The Xceed provides optimum visibility, without glare or shadows as the special shield and optics design. Then every athlete, whatever their sports, can enjoy themselves, perform at their best and avoid injury.

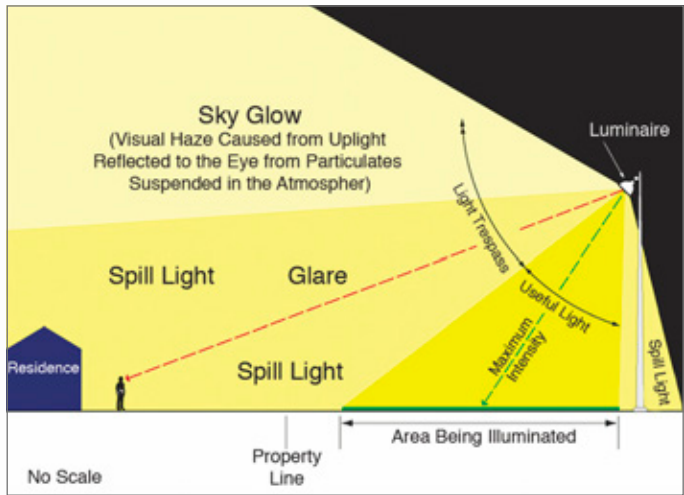
With U bracket and a sleek square compact, The Xceed sports light can be adjusted 360° horizontally and 180° vertically to ensure even light for every Corner of sports field but no light pollution to other areas.

## GLARE CONTROL

Glare typically impacts larger areas as pole mounted luminaires may be visible from long distances. Incorporating external shielding (the visors), the Xceed limits direct view of light sources and help reduce glare.



# LIMIT THE LIGHT POLLUTION



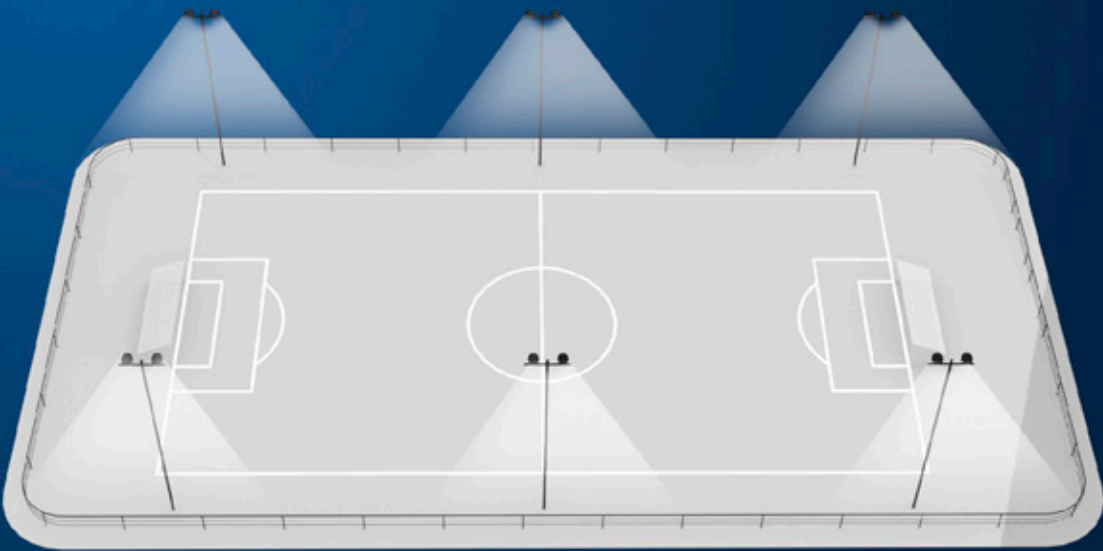
Obtrusive Light Components.

## SKY GLOW

The haze or glow of light emitted above a lighting installation is a form of light pollution referred to as sky glow, must conform to Sports and Recreational Area Lighting requests of IES RP-6-15/ EN 12193. Sky glow can be minimized by reducing the amount of up-light cast into the sky. For the light emitted into the sky directly from the luminaire, external shielding (visors) can be added.

## SPILL LIGHT

Any light that falls beyond the area that is being illuminated that is not intentional or required is considered spill light. Although spill light should generally be controlled in residential areas, reactions to spill light often vary. Some residents are ambivalent with regard to spill light, or may even prefer spill light on their property to enhance their feeling of security, while other residents want the spill light directed away from their property.

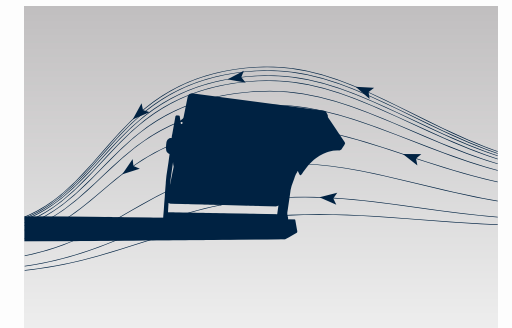




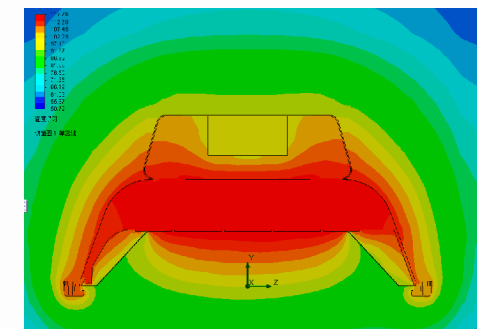


## WIND RESISTANCE MINIMIZATION

It is essential to consider the wind resistance of the flood lights and their suitability for existing or proposed installation in the outdoors. Please note that flood lights mounted horizontally on the ground, such as asymmetrical distribution help to reduce wind resistance and allow better control of spill light.




## THERMAL OPTIMIZATION



The proprietary thermal efficiency design with passive cooling maximizes heat dissipation to ensure safe operation and good lifetime performance of the luminaire in high temperature environments.

# PERFORMANCE

	300W~800W
	150lm/W
	Philips Lumileds
	100-277 VAC (277-480 VAC Optional) Dimming Optional
	0.95 min
	≥70
	4500~5500K (2500~5500K optional)
	L70>150,000hours
	30° , 60° , 90°
	IP66
	IK08
	SPD10KV
	Operating Temperature:-45°C to +40°C (-49°F to 104°F) Storing Temperature:-45°C to +80°C (-49°F to 176°F)

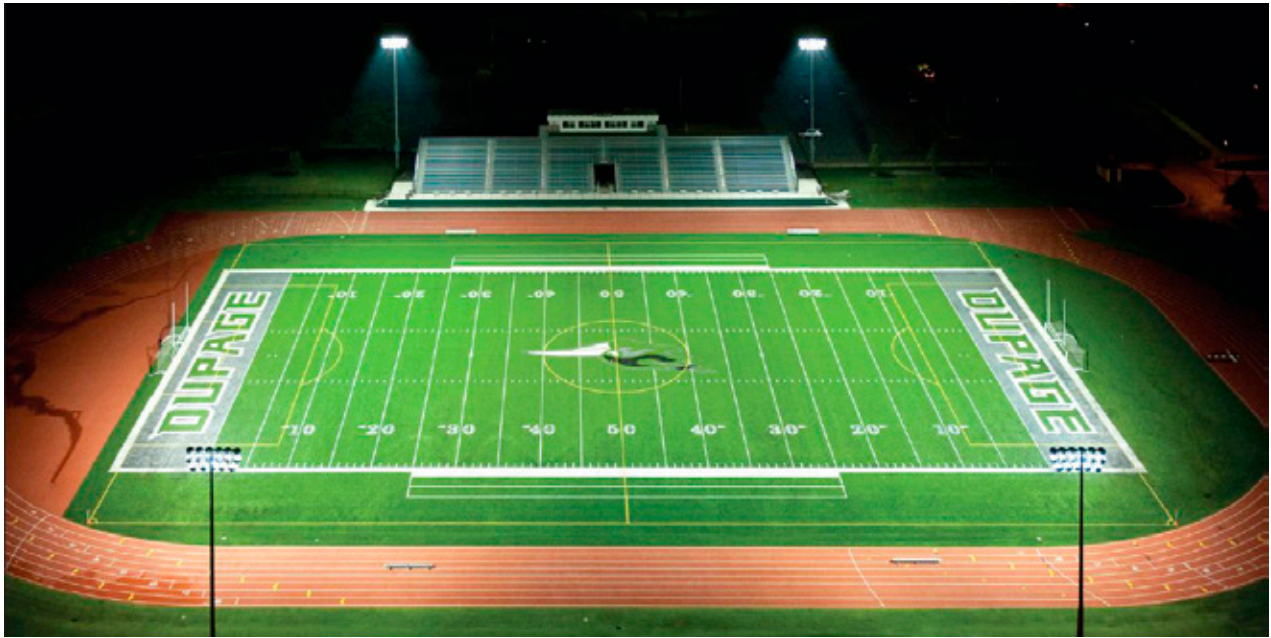






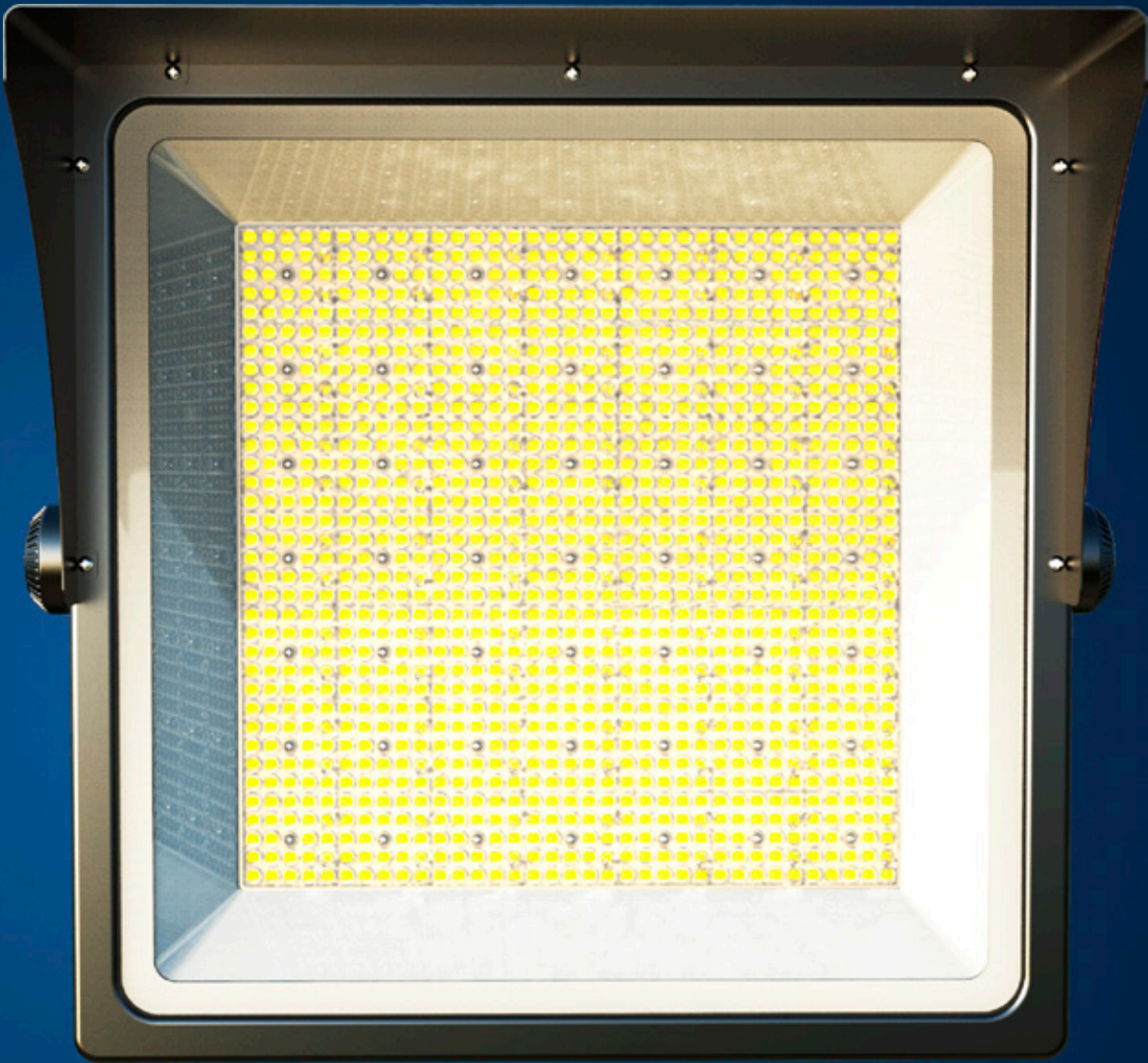
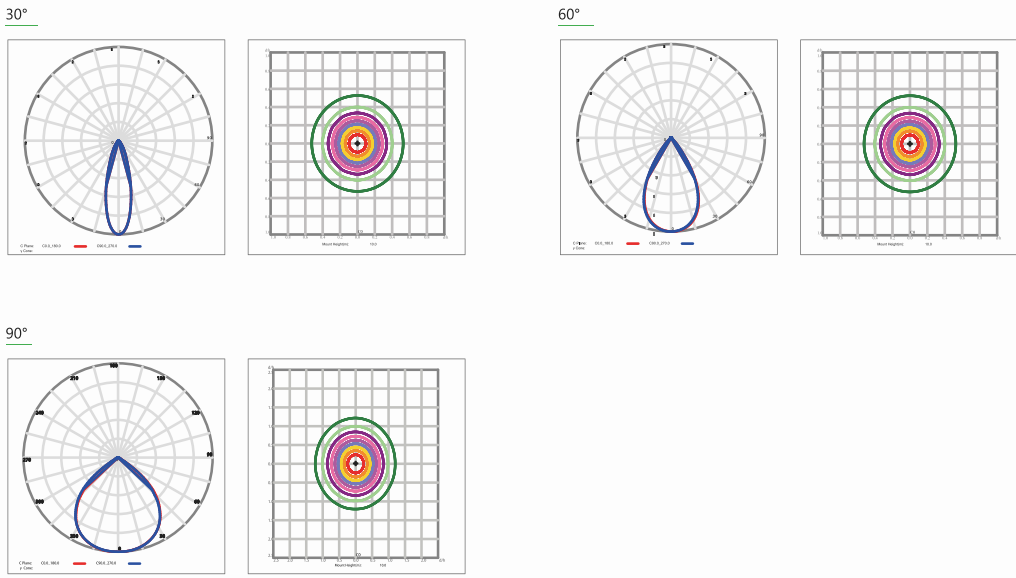
# SPECIFICATIONS

Model	Power	Efficacy(IES)	Total Lumen	Dimension	N.W
EL-XCFL-300	300W	150LPW	45,000lm	430x449x303mm	9.kg
EL-XCFL-400	400W	150LPW	60,000lm	430x449x303mm	9.kg
EL-XCFL-500	500W	150LPW	75,000lm	527x523x336mm	14.5kg
EL-XCFL-600	600W	150LPW	90,000lm	527x523x336mm	14.5kg
EL-XCFL-800	800W	150LPW	120,000lm	581x575x326mm	16.0kg

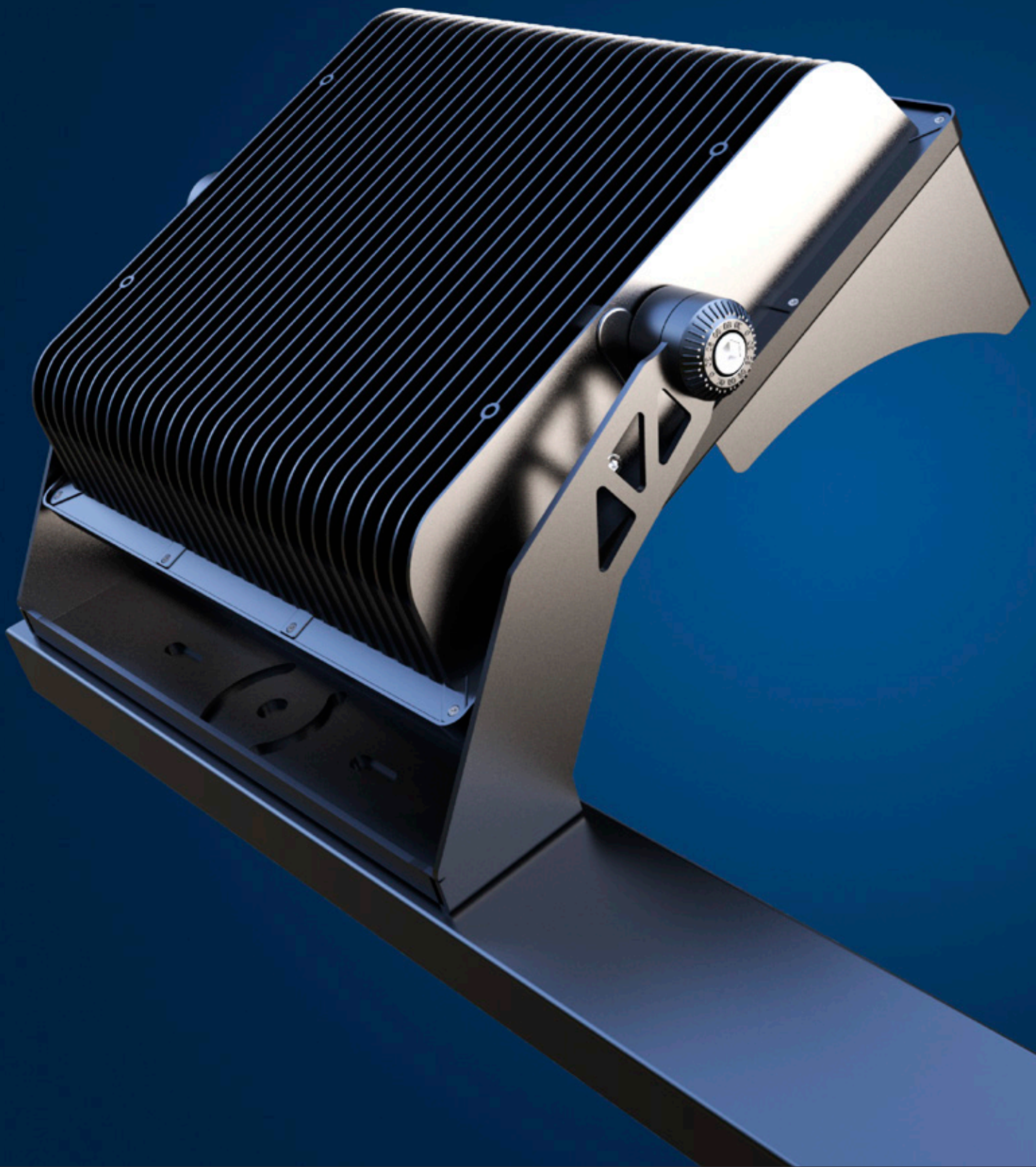




# PHOTOMETRICS

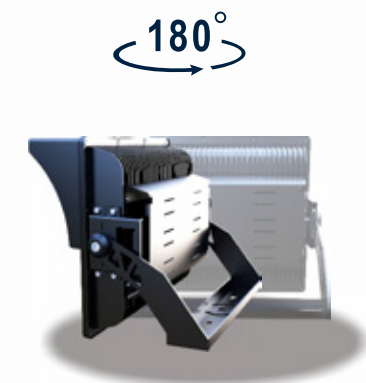
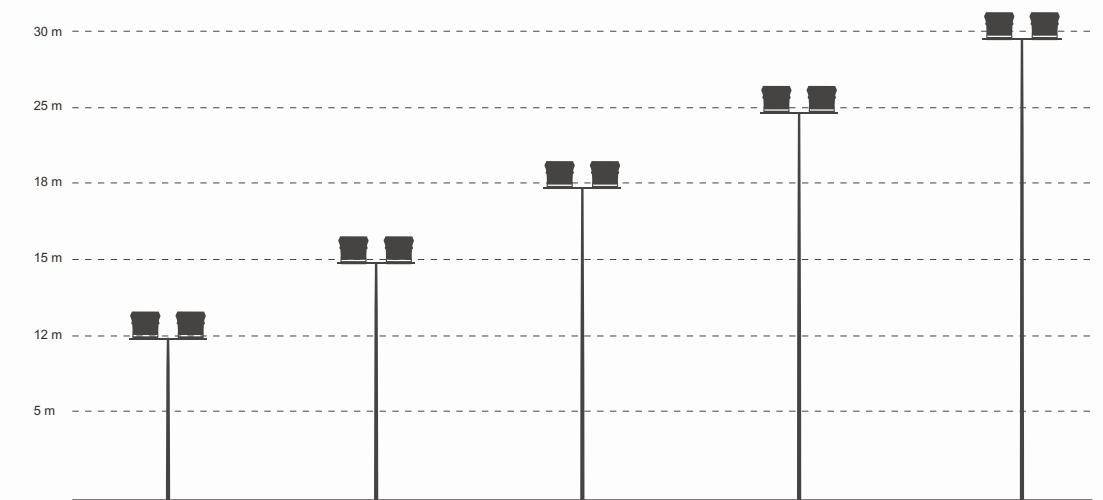






## INSTALLATION

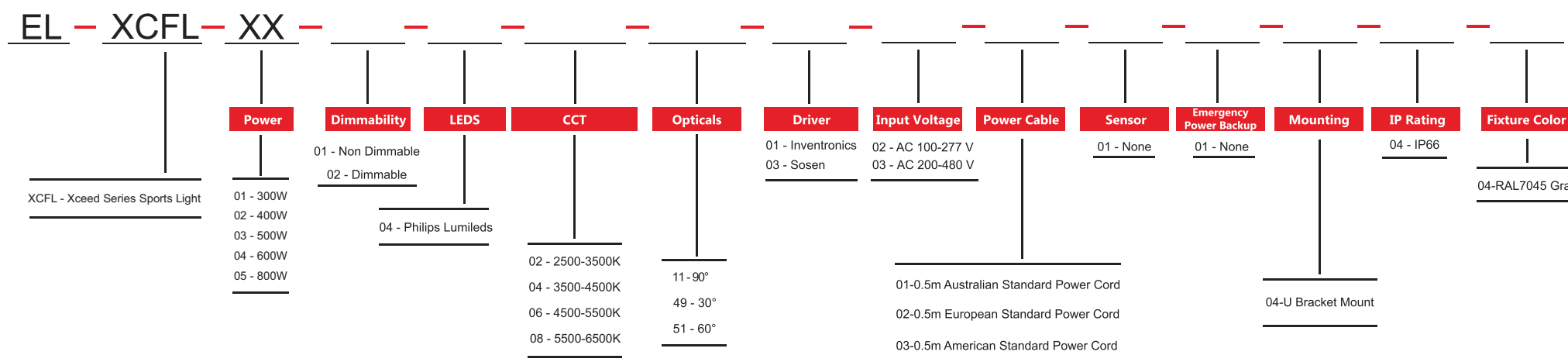
Safety and simplicity are crucial when installing and maintaining a sport light at great heights. As a complete lighting solution for both outdoor and indoor spaces, it is ideally suited for a large variety of mast configurations, mountings and heights. Featuring a lighter, more compact design and improved thermal management, it is much easier to install.





# ORDERING INFORMATION

**E-LITE** semicon



E-Lite Semiconductor Co., Ltd.  
Headquarter & Factory  
Website: <http://www.elitesemicon.com>