

**E-LITE** semicon

# **SOLIS**

## **SERIES**

### **Integrated Solar Street Light**

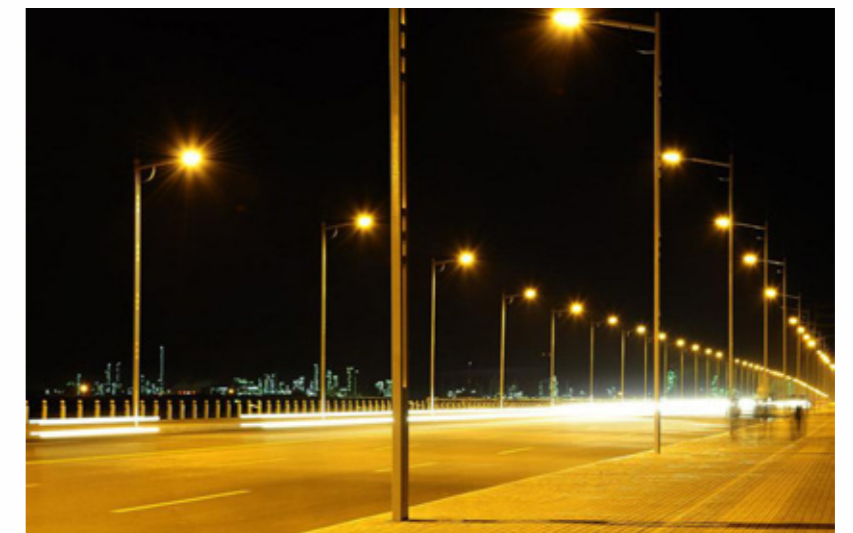




## SERVE THE PEOPLE WHILE SAVING THE PLANET

LED Solar street lights are fully powered by solar energy. The solar panels charge a rechargeable battery during the day and power the LED chips during the night. Solar power is a kind of inexhaustible and environmental-friendly new energy resources. So it can light the night for you and save the planet well.

Solar powered LED street light has the advantages of stability, long service life, simple installation, safety, great performance and energy conservation. This kind of light can be widely installed in urban roads, living districts, factories, tourist attractions, parking lots and the area in remote locations where the electricity is unavailable or erratic.



# KEY FEATURES

---



Easy Installation



Eco Friendly



Weather Resistant



LED Technology



5-year Warranty



Maintenance Free



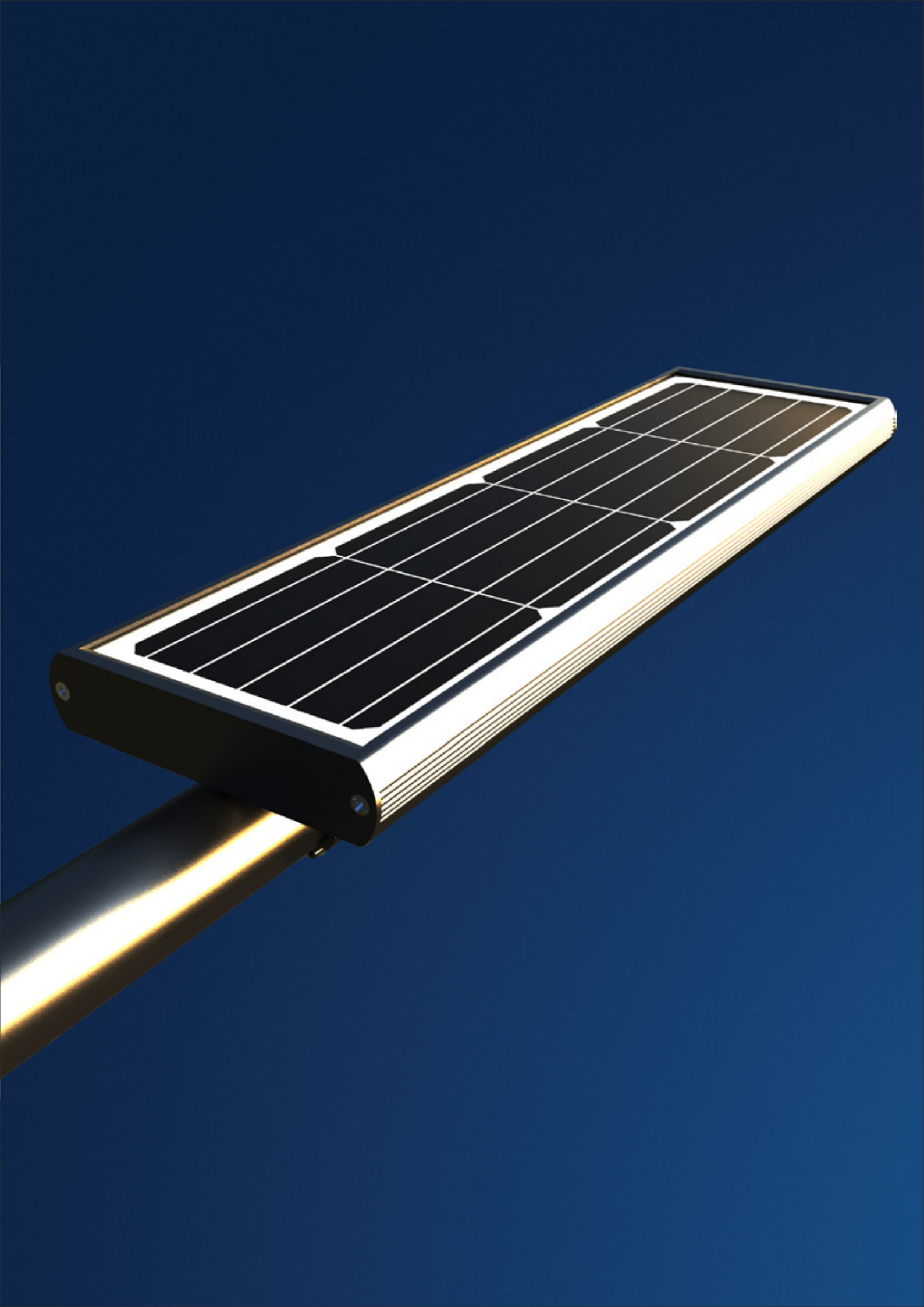
No Wiring



Cost Efficient

---





## APPLICATIONS

---



- Street Lighting
- Roadway Lighting
- Pathway Lighting
- Ramp Lighting
- Sidewalk Lighting
- Private Road Lighting



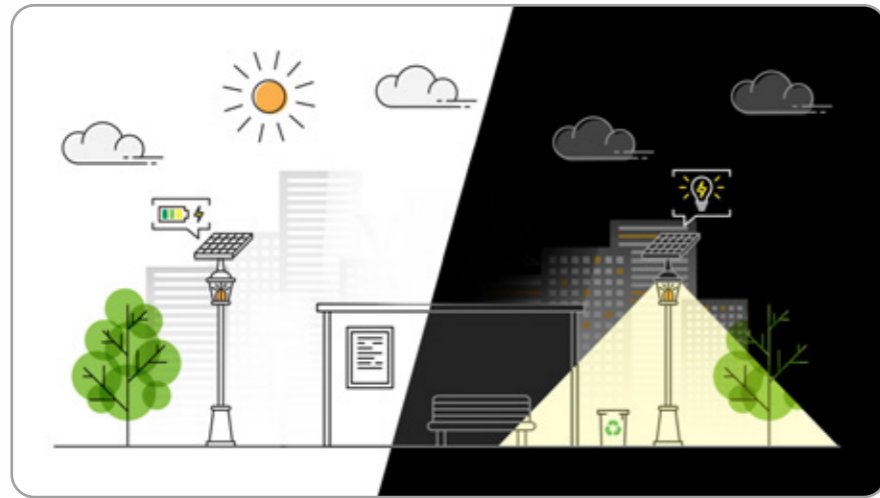
- Farm Lighting
- Wildlife Area Lighting
- Perimeter Security Lighting
- Park Lighting
- Gate Lighting
- Railway Yard Lighting



- Fence Lighting
  - Campus Lighting
  - Ship Dock Lighting
  - Remote Area Lighting
  - Military Base Lighting
  - Jogging Path Lighting
-

## DAYTIME OPERATION

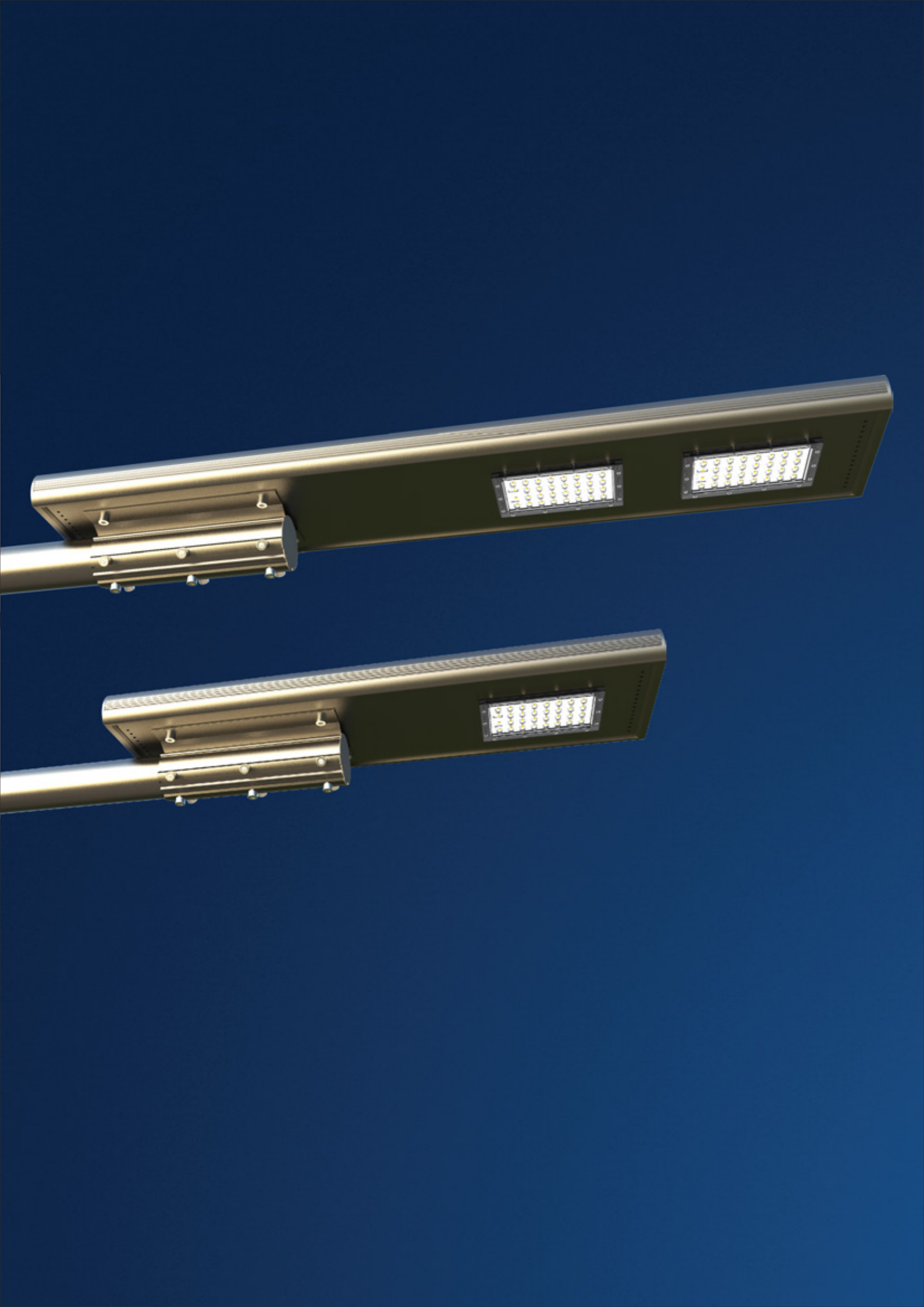
The solar panels absorb the sunlight energy, then transmit it to electricity and store it in the battery during the day. Generally, solar panels convert average 20% of sunlight energy into electrical energy



## NIGHT TIME OPERATION

At night, the stored electrical energy power the light for the whole night or based on a user determined operating, 4hours-30%, 2hours-100%. The light turns off when the sun rise up, and the day/night operation cycle starts again.





## NOT THE FUTURE, JUST NOW!



Only top quality mono - crystalline silicon solar panels with high efficiency and long lifetime are used.



Quality lithium batteries are used to store the energy, provide energy for immediate requirements, and enable a back-up for days when there is little or no sun.



High Lumen LED for maximum efficacy. Dedicated designed low-voltage solar controller technology with dimming capabilities for power-save management. Lifetime > 50,000 hrs and CRI nominal 70.



Microprocessor managed algorithms autonomously determine sunrise and sunset.



Easy to install without buying cables and rectifiers.

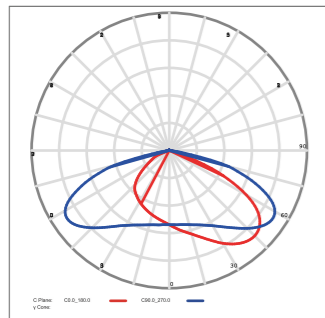
**E-LITE semicon** / [Hello@elitesemicon.com](mailto>Hello@elitesemicon.com) / [www.elitesemicon.com](http://www.elitesemicon.com)

# PHOTOMETRICS

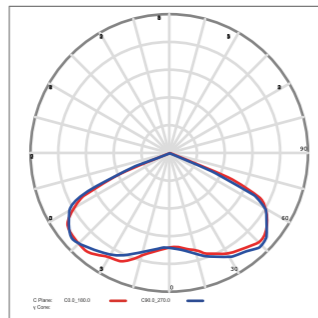
## Optimized Comfort

In all road applications, comfort is a key standard. The optics of Solis series light is designed to enhance comfort with reduced glare.

90x150 DEGREE (Type III -S)



130 DEGREE (Type V -S)



**E-LITE** semicon / [Hello@elitesemicon.com](mailto:Hello@elitesemicon.com) / [www.elitesemicon.com](http://www.elitesemicon.com)



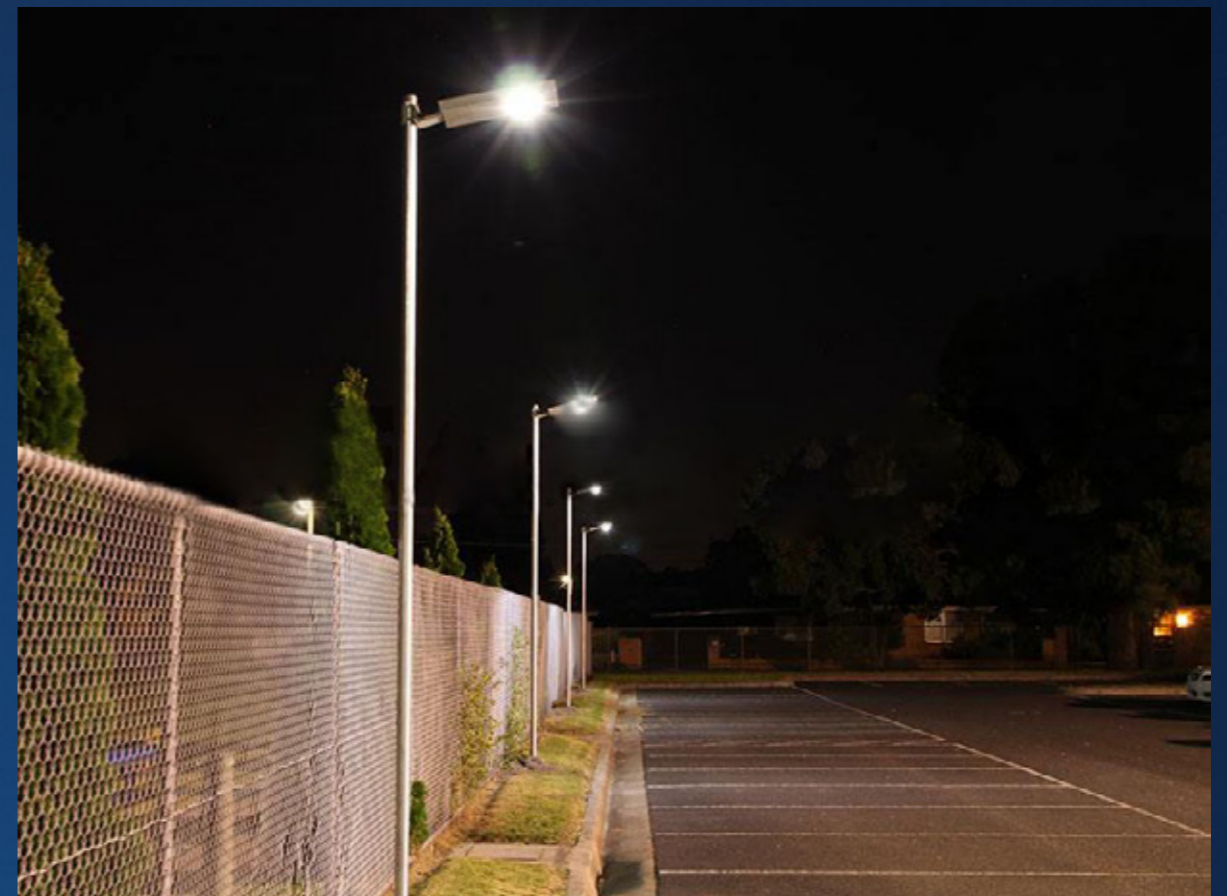
# PERFORMANCE

	20W / 30W
	140lm/W
	Philips Lumileds
	2 consecutive rainy days
	PIR & Timer Dimming
	5000K ( 2500~6500K optional )
	Type II / Type III
	IP66
	IK09
	Monocrystalline silicon photovoltaic panels
	Lithium
	Slip fitter
	Operating Temperature:-30°C to +45°C (-22°F to 113°F) Storing Temperature:-40°C to +80°C (-40°F to 176°F)

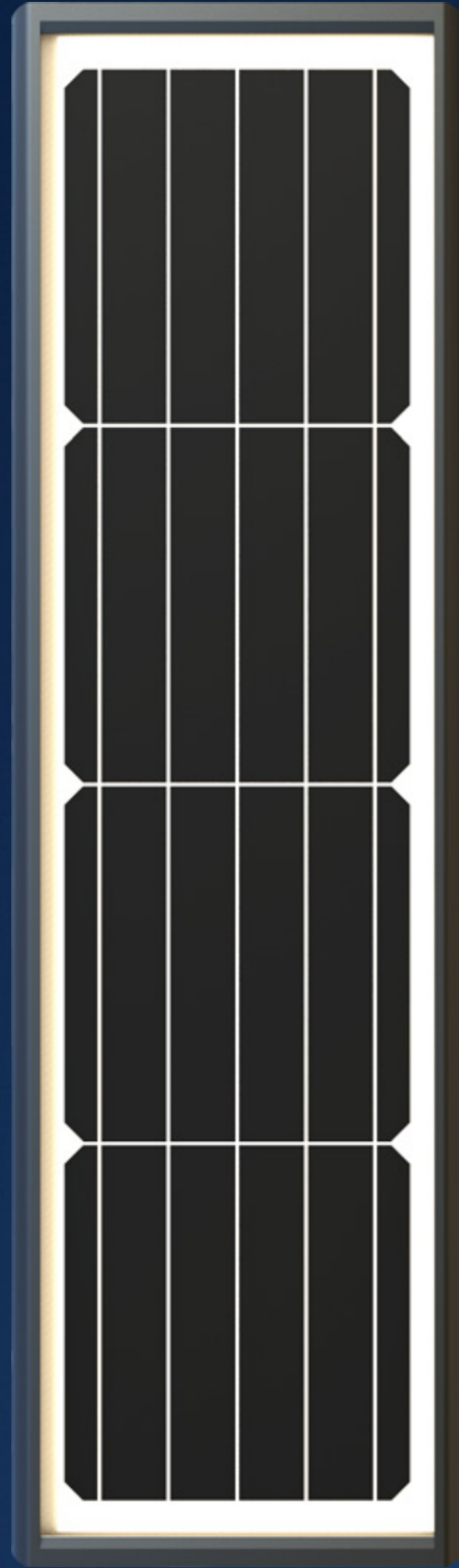


# SPECIFICATIONS

Part#	Power	Solar Panel	Battery	Efficacy (IES)	Total Lumen	Product Dimensions
EL-SSTSL-20	20W	20W/6V	25AH/3.2V	140 lm/W	2,800lm	700×212×115mm
EL-SSTSL-30	30W	30W/6V	40AH/3.2V	140 lm/W	4,200lm	1000×212×115mm







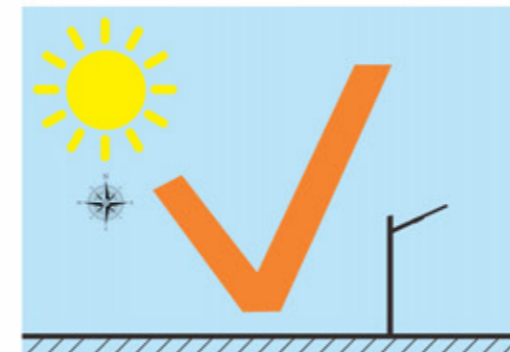
## ENERGY SAVING

Replacement Reference		Energy Saving
20W SOLIS STREET LIGHT	75 Watt Metal Halide or HPS	100% saving
30W SOLIS STREET LIGHT	100 Watt Metal Halide or HPS	100% saving

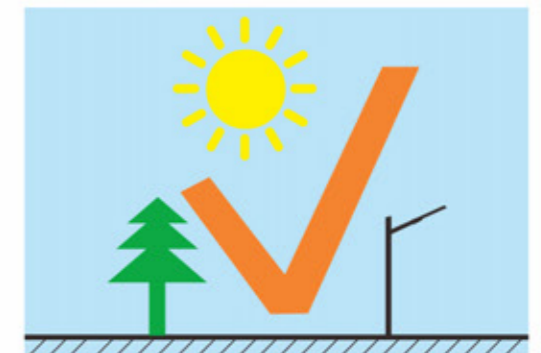
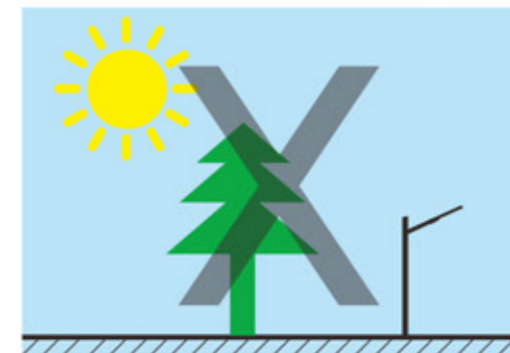




## INSTALLATION

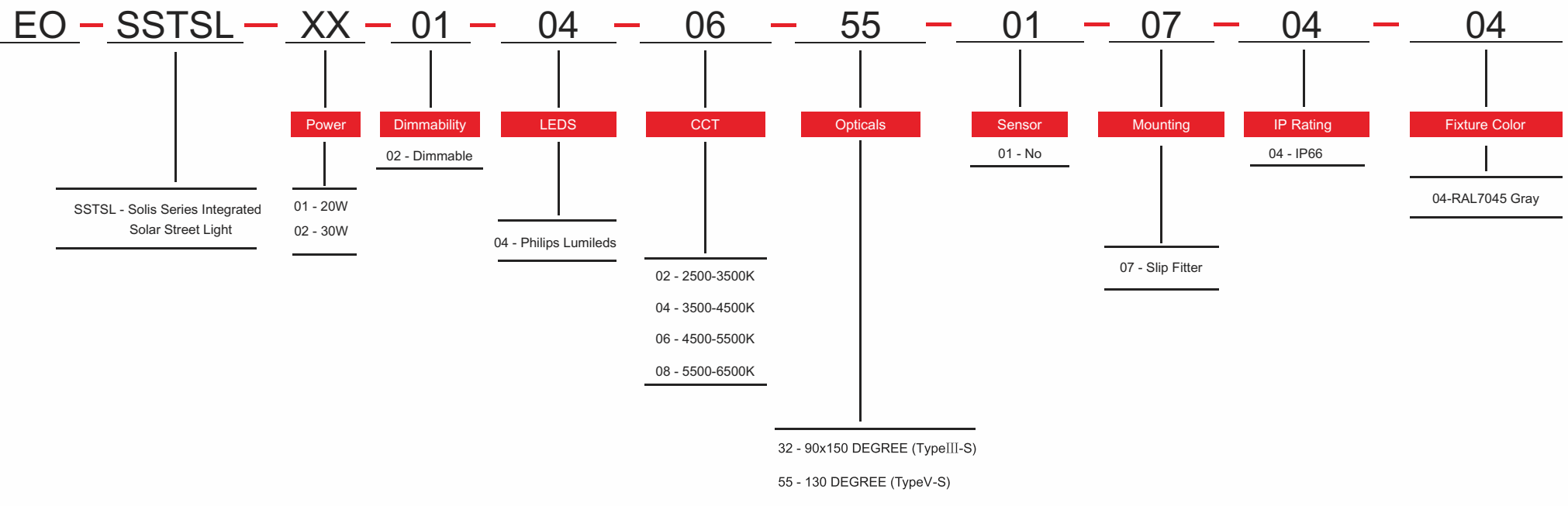


The solar panel can be adjusted to the best angle where it is able to absorb maximum sunshine. The most optimum direction to face the solar panel is somewhere between south and west. It is at this location that the panel will receive the maximum sunlight throughout the day.



The solar panel must not be installed in a shaded or part shaded location and never indoors.

# ORDERING INFORMATION



E-Lite Semiconductor Co., Ltd.  
Headquarter & Factory  
Website: <http://www.elitesemicon.com>